

Edition 11 • Quarterly



July 2020

DITCHLING

PARISH COUNCIL MAGAZINE



NEWS AND EVENTS FROM YOUR PARISH COUNCIL

The Complete Supplier of **PVCU ALUMINIUM WOOD**

WINDOWS

DOORS

**ALTERNATIVE
TO TIMBER
COLLECTION**

CONSERVATORIES

MULTIFOLDS

SHAW'S
THE GLASS & WINDOW COMPANY

**ALUMINIUM
RANGE**

SLIDING DOORS

VERTICAL SLIDERS

COMMERCIAL

AND MUCH MORE!

Head Office | Brighton Showroom | Glass Showroom
8-9 Centenary Industrial Estate,
Hughes Road, Brighton BN2 4AW

Tel: 01273 691000 • Fax: 01273 691001

Shoreham Glass Centre | Showroom
266, Upper Shoreham Road,
Shoreham-by-Sea BN43 6BF

Tel: 01273 462 749 • Fax: 01273 453 093

Supplying Sussex with double glazing, windows and doors since 1970

Email: info@shawsofbrighton.co.uk • Website: www.shawsofbrighton.co.uk

CONTENTS

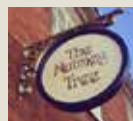
Chairman's article	4
Clerk's Corner	12
Beacon parishes Covid-19 response	16
The Turner-Dumbrell Foundation	18
National Park introduces inspiring scheme	20
Horticultural Society Spring Show	22
Ditchling History Project	24
Royal British Legion	28
1st Ditchling Scout Group	29
New Grit Bin	30
A message from our MP -Maria Caulfield	31
Dame Vera Lynn 1917-2020	33
Ditchling Lawn Tennis Club	34
County Council Report	35
Oldland windmill	36
Art in Ditchling	37
Win £250 in Photo Competition	38

Cover photo credit: Gordon Bain



The Nutmeg Tree

Recently refurbished Tearoom set in
the heart of Ditchling



Morning Coffee • All Day Breakfast • Lunches
Afternoon Tea & Cake • Dogs Welcome
Courtyard Garden • Cycle Park • Licenced

01273 842708

6 West Street, Ditchling, BN6 8TS

For regular updates and full menu, visit:



thenutmegtreeditchling



@thenutmegtree

Domestic electricians based in
Burgess Hill, providing services
throughout Sussex and surrounding areas



OPTIMUS
ELECTRICS

Call us today for a free quote.
07813 375 838
chris@optimuselectrics.co.uk



PLEASE SUPPORT LOCAL BUSINESSES

A big thank you goes out to all the local businesses that have advertised
and supported the Ditchling Parish Council Magazine

To advertise please call 01843 269513



Supporting the
REBUILD OF BRITAIN



Published by Community Ad Web Ltd 01843 834160
email info@communityad.co.uk web www.communityad.co.uk

The views expressed in any published content are solely those of the contributors. The Publishers accept no responsibility for the accuracy of any information contained in the publication. The contents of this magazine including images may not be copied, reproduced, distributed, downloaded or displayed in any form or by any means without the prior written permission of Community Ad Web Ltd. Unless otherwise specified, the authors of the literary and artistic works in the pages in this magazine have asserted their moral right pursuant to Section 77 of the Copyright Designs and Patents Act 1988 to be identified as the author of those works. The Publishers reserve the right not to publish a submission or part of a submission that they consider defamatory or otherwise inappropriate for publication.

HELLO AGAIN AND WELCOME

to our July edition of the Ditchling magazine.



My name is Don McBeth, the Chairman of Ditchling Parish Council. I would like to share with you some information concerning what the Council has been working on over the past 12 months. It is a statutory

requirement of the Parish Council, for the Chairman to report to the community on what has been achieved in the preceding year and to be available at a meeting of the community, to answer questions from the public. The Annual Parish meeting was supposed to be held on March the 23rd 2020. This is where the report below, would normally be given to those in attendance. However, with advent of the Corona Virus, we have been advised that for the time being, this meeting should be postponed. As a result, an Extraordinary General Meeting of the council was held on the 21st of March to enable the continued functioning of the parish in these trying times. The following is a photo of councilors and clerk at the "SSEGM", that is the "Spatially Separated" Extraordinary General meeting.



DITCHLING PARISH COUNCIL CHAIRMAN'S REPORT 2019/20

1) The Beacon Villages Neighbourhood plan has now been in force for over two years. According to the government, Neighbourhood plans are still a major guide when dealing with planning issues. Fortunately, they are still the strongest tool we have to help fend off unwanted speculative housing development, both within and outside the National Park.

2) The precept figure for Ditchling Parish Council for 2020/21 has been set at £98,905.00. This is the amount of money that we have budgeted for to run all of the projects and services within the parish, and includes monies towards the new car park in Keymer road.

3) As you may know we obtained planning permissions from the South Downs National Park for a 40-space car park to go ahead, the land now being in the ownership of the Parish Council. In order to obtain this permission, the South Downs National Park set many conditions, the discharge of which are now in the progress.

As an illustration of just one of the 15 conditions "detailed on the Grant of Planning Permission (SDNP/17/01358/FUL)" I have extracted below

Condition 6:-

"No development shall take place until the applicant has secured the implementation of a programme of archaeological works in accordance with a written scheme of investigation (WSI) which has been submitted by the applicant and approved by the Local Planning Authority. A written record of any archaeological works undertaken shall be submitted to the Local Planning Authority within 3 months of the completion of any archaeological investigation unless an alternative timescale for submission of the report is first agreed in writing with the Local Planning Authority. The development shall not be brought into use until the archaeological site investigation and post investigation assessment (including provision for analysis, publication and dissemination of results and archive deposition) has been completed in accordance with the programme set out in the written scheme of investigation to the satisfaction of the Local Planning Authority, in consultation with the County Planning Authority."

Continued ➤

TISSHAW'S

Family Law Solicitors

Tisshaws is a specialist family law practice offering advice on divorce, children and financial matters

- **Fixed Fee Divorce £450 plus VAT & Court Fee**
- **Initial meeting £50 (inc. VAT) Up to 1 hour – No Obligation**
- **Fixed Fees negotiated for other family matters**

Tel: 01444 472700 / Fax 01444 472701

Email: info@tisshawssolicitors.co.uk

www.tisshawssolicitors.co.uk

Tisshaws Limited T/A Tisshaws Solicitors.

Authorised and regulatory Authority SRA

No.566801



Make your wedding extra special with a car from Chariots!

Established in 1993



We provide chauffeur driven executive cars, limousine & minibuses in Sussex and the South East

Friendly Staff & Professional Chauffeurs

- ◆ Wedding Car Hire
- ◆ Chauffeur Service
- ◆ Minibus Hire
- ◆ Limousine Hire

01273 813401 Email: info@chariotschauffeurs.com
www.chariotschauffeurs.co.uk

Chariots, Merlins, Uckfield Road, Clayhill, East Sussex, BN8 5RU

INSIGHT CONSTRUCTION

We offer all aspects of Building & Construction

07955 20 40 60
01273-88 40 60
info@insightconstruction.co.uk
www.insightconstruction.co.uk

BOWLEY FUNERAL SERVICE



Paul Bowley

**INDEPENDENT FAMILY
FUNERAL DIRECTORS
& MONUMENTAL MASONS**

**Over 42 years experience in the
funeral profession**

**30 Keymer Road, Hassocks,
West Sussex BN6 8AN**

Tel: 01273 841711

E.mail paul@bowleyfuneralservice.co.uk

www.bowleyfuneralservice.co.uk

Local governance is an exceptionally slow process and with conditions like this I hope you can see that this is taking us much longer than we envisage. This will inevitably require additional costs for surveyors, detailed drawings etc. Earmarked reserves are currently being used to pay for this work; however, for the construction stage the Parish Council have made an application to the South Downs National Park for CIL (Community Infrastructure Levy) funding and will be applying to Lewes District Council again in April 2020. If funding is not forthcoming, another option would be a loan from the public works scheme.

Once the car park is completed East Sussex Highways have advised that parking in Lodge Hill Lane would need to be considered to combat the inconsiderate parking that often takes place, and also how parking restrictions could be implemented.

4) Following the local elections last year, the Parish Council co-opted two new Councillors, Robert Sansom and Edwina Rowling. This year John Leaver stood down leaving a vacancy, which is currently being advertised. If we get a suitable volunteer, we hope to confirm it at our next available meeting. The Council which should consist of 11 members, welcomes new blood with new ideas from eligible members of the public, when these vacancies arise.

5) Superfast Broadband is still an issue, especially with those residents living in the more remote areas of the parish. We are advised that contract 3 has been issued to BT, that should resolve any outstanding problems by 2021 at the latest. We must wait and see!

6) As you may recall a public consultation, took place in January 2019 in relation to suggestions for improvements in the Recreation Ground, including new playground facilities. Currently funding and officers time for this project are challenging, however it still is very much on the radar of the Parish Council's projects they wish to achieve in the future.

Unfortunately, due to the large amount of work and funding required for the car park project the Council are focusing on the completion of this, prior to further work being done on the playground refurbishment.

Quotations were received in the region of £85,000 to £95,000, and this should give you an idea of the funding that the playground project needs in order to be completed. This year has also given us issues with the ground conditions of the football pitch which appears to be caused partly by the extreme levels of rain over the winter months and also the drainage system. Currently further investigations are being made into this issue, and how any remedial work can be funded.

7) Burial ground extension. Again, I report that we have almost reached the limit of our burial ground. So as many of you may have noticed the scrub land to the east of the existing burial ground has now been cleared in preparation. This will be a long process, but should serve the parish for many years to come.

The Council has also invested this year in an improved mapping system for the current Burial Ground so that record keeping is more consistent and more user friendly. The new burial ground will be set up using the same mapping system in the future.

8) Again, we have the Beacon Parishes Traffic Consultancy group, which is coordinated by both Ditchling and Westmeston parishes, to review traffic problems, and also to monitor the traffic using Spatham Lane. As always, the council has been in discussion with East Sussex County Council regarding traffic problems throughout the parish. These are conducted via a process called SLR or Strengthening Local Relations. It is a difficult process, not made easier by government cutbacks to funding for all county councils. We will continue the discussion, but are not hopeful of any immediate changes being implemented. In the coming year we are hoping for monetary contributions towards traffic improvements, coming from the Community Infrastructure Levy (CIL).

Jolly Gel saved our marriage

To find out how ask your swimming pool shop.

Simple to use, even removes algae spores. Jolly Gel is the only proven flocculent to work with sand, Zeodere & glass.



www.mineralsi.com

FREEMAN BROTHERS FUNERAL DIRECTORS

Serving Sussex & Surrey since 1855

126 High Street, Hurstpierpoint, BN6 9PX

‘The attention to detail made the perfect send off for a much loved lady’.

‘Nothing was too much trouble.
The Service on the day was just wonderful’.

‘You’ve been incredibly kind at helping us ease the pain and making it as bearable as possible’.

Here when you need us.

Branches also at: Billingshurst, Crawley and Horsham

hurst@freemanbrothers.co.uk | 01273 831497 | www.freemanbrothers.co.uk



Celebrating 165 years as an independent and family-run company

This is a charge that local authorities can set on new housing development, in order to raise money to help fund infrastructure, facilities and services such as schools or transport improvements.

9) Planning – The Parish Council continue to be consulted on local planning issues and have put in place a Planning Committee that meet at 6.30pm prior to the main Parish Council meeting, which is made up of 7 members of the Parish Council. Any large or contentious applications are also discussed at the full Parish Council meeting as well. Parish Councillors work with the newly adopted South Downs National Park Local Plan, Ditchling, Streat and Westmeston Neighbourhood Plan and other planning policies including the National Planning Policy Framework (NPPF) to comment on applications. As with all our Parish Council meetings, any members of the public are welcome to attend and a 15-minute slot is available for members of the public to speak in relation to agenda items at the start of all meeting.

10) As well as all the above, the Parish Council continue deal with the regular maintenance such as grass cutting at the Recreation Ground and War Memorial area, emptying of dog bins, replacement and repairs to street lighting, which this financial year has been in excess of £5,500. We have also had the pleasure of giving nearly £5,000 to local organisations in the form of grants.

11) May I take this opportunity to thank Sarah Mamoany for all the work she has done over this her first full year as parish clerk, and to mention that again this year, Derek Blackhall our assistant parish clerk has been largely responsible for the production of this magazine.

May we thank him again for an excellent job. The magazine has again had positive feedback from parish residents, and may I add that if you have anything that you would like to add or see added or any comments in general about the magazine please contact Derek. Articles are always wanted from local organisations and groups so we can update the village on what is going on in the Parish.

12) I would like to thank Ray Chatfield for his many years (no one can remember how many

but certainly over 20) of volunteering in our community picking up litter to keep Ditchling looking clean and tidy. Ray is retiring this year, probably most are unaware of the fact that Ray is paid an honorarium which he chooses every year to donate to local charities; these have included Dame Vera Lynn's Children's Charity, St Peter & St James Hospice, The Monday Group and St Catherine's Hospice. If anyone wishes to take up this voluntary role, please do get in touch with us.

13) Finally, may I mention some councilor resignations, and take this opportunity to thank John Leaver and Phil Smith for their efforts in the past years. May I thank them for their active participation in discussions, and for their involvement in the myriad of topics that have presented themselves to us. It is encouraging to reflect that within our small community, we have such a pool of people, willing and able, to give up their time and energy for the good of us all.

Don McBeth

Chair Ditchling Parish Council



We can't wait to welcome you back!

Ditchling Museum of Art + Craft will soon be reopening for a limited number of visitors who book online in advance.

We are delighted to be opening with new exhibition *tillage*, a major show by pioneer of public art, John Newling.

Advance booking only, please book online at ditchlingmuseumartcraft.org.uk or call 01273 844744



Landscape Gardeners

- Garden design & waterscapes
- Paving & driveways
- Decking & fencing
- Pond maintenance
- Planting & tree work



For friendly advice and a free quote, please contact:

01273 843283

www.standens.net

info@standens.net



Haywards Heath Auto Centre

2 Bridge Road,
Haywards Heath. RH16 1UA

**Car servicing
and repairs for
all makes
and models**

The Good Garage Scheme

01444 458641

www.haywardsheathautocentre.co.uk

Email: kerry@hhauto.co.uk

Traditional Karate

The Triangle - Burgess Hill

Every Monday

Pee Wee:
5-7 years 4pm-5pm

Juniors:
8-15 years 5pm-6:30pm

Adults:
15+ years 6:45pm-8pm



Julia Sensei
Juniors



Jami Sensei
Adults

Shorinjiryu Renshinkan Karate Do 37 years of teaching excellence

01444 454827 / 0797 2146 264

jtrenshinkan@btinternet.com / jamiesenseirenschinkan@gmail.com

renshinkankarateengland.org.uk



Unveiling of the South Downs National Park Plaque

In 2009 Hillary Benn the then Secretary of State for Environment, Food and Rural Affairs, announced that the South Downs would at last become a National Park.



The signing of the official papers by Mr Benn, took place in Ditchling village on the 12th of November 2009 in the Ditchling Tea Rooms, now the Nutmeg Tree Cafe.

To commemorate this event a plaque has been commissioned, and erected outside the Nutmeg Tree Cafe, where Hillary Benn was invited to unveil it. This took place on the 10th of February 2020 when Hillary Benn as guest of honour among dignitaries from the South Downs National Park, unveiled the plaque.

Two videos of Hillary Benn announcing the formation of the National Park in 2009, and

then unveiling the plaque in 2020, can be seen on the following web sites: -

<https://vimeo.com/365555544> or <https://youtu.be/9cWcO7xl3N8>

Don McBeth

JBT TREE CARE & LANDSCAPING

Tree Care Fencing
Landscaping
Stump Removal Logs

07894 291713
www.jbtreesussex.co.uk

OUR NEW AUTUMN
ART CLASS
WILL CHEER YOU UP
AND HELP YOU MAKE
NEW FRIENDS

FEEL LIKE YOU'RE GOING STIR-CRAZY?

the
Seasons
Art Class

YOU
DESERVE
THIS TREAT

- Learn impressive new skills
- Fun, easy, step-by-step
- 3 hour sessions, morning or afternoon, for 3½ months
- Time to get Arty and enjoy a fun social life again!
- Make The Seasons your favourite day each week

IN A SAFE
AND SECURE
ENVIRONMENT

EXTREMELY
SAFE FOR
YOU

PLACES LIMITED! FOR MORE DETAILS AND
A FRIENDLY CHAT, PLEASE CALL TODAY

07783 374347

Chailey Village Hall

Brighton Piano Warehouse

The Lowest Prices in the South

- New & Second-hand Pianos
- Grand & Upright Pianos
- Digital Pianos
- Covers, Stools & Accessories
- Pianos Wanted – Best Prices Paid
- Concert Hire
- Piano Removals



Free Local
Delivery &
First Tune

01273 601 989

www.brightonpianowarehouse.co.uk
43-45 Bonchurch Road, Brighton, BN2 3PJ



RWMOTOR
ENGINEERING

Your local friendly family run garage with over 40 years
experience in all aspects of vehicle repairs, old, new,
classic, sports & prestige.

All Makes & Models • M.O.T.'s & Servicing • Repairs
Diagnostic Specialists • Wheel Alignment
Tyres & Exhausts • Clutches • Cambelts • ECU Remapping
Air Conditioning • Brakes • Brake Disc Skimming
Welding & Fabrication • Engine Tune-ups
Petrol Injector Testing & Servicing • Diesel Specialists
Carbon Cleaning • Courtesy Cars Available



www.rwmotorengineeringltd.co.uk

Unit 1, The Old Brickworks,
Station Road, Plumpton Green
East Sussex BN7 3DF

Tel: **01273 891393**
Email: rwengineering@live.co.uk



RICHARD SOAN
ROOFING SERVICES

Flat & Pitched Roofing

Quality Domestic • Heritage
Commercial • Education • Industrial

Reputable for price, reliable and workmanship
Best roofing materials for longevity, a legacy of
quality service.

All advice is free and without obligation



- Telephone: 01273 486110
- Email: enquiries@richardsoan.co.uk
- www.richardsoan.co.uk



COVID-19 Update

During this strange and unusual period of time, I thought I would let you know how the Parish Council have been working and adapting to the new situation we find ourselves in.

An extraordinary meeting was called on the 21 March and the Parish Council met in the village hall car park all 2 meters apart, complying with the statutory laws of holding a meeting in the public domain. A very strange situation and it was agreed that delegated powers were put in place to the Clerk so that the Council could continue to function as it was clear at this stage that shortly public meetings were not going to be possible. In April new legislation was brought into place which enabled councils to hold remote meetings until May 2021.

Until such times as the Council held their first remote meeting on the 1st June 2020, areas such as responding to Planning Applications, agreeing payments and other matters related to management of the Parish Council facilities were all dealt with via delegated powers; these remain in place currently due to the changing situation.

Councillors met via the Zoom platform on a couple of occasions to see if we could all cope with the technological advances and after a few hitches with sound we felt that a remote meeting was viable. Further Parish Council meetings will be held on the 22 June and the 29 July via the remote platform. If members of the public wish to attend, they can still do this remotely, with the details of how to join being noted on the agenda of the meeting, which is available on the website and notice board.

Of course, as we were all advised to work from home if we could, then this is what I have been doing since March and continue to do so currently as the village hall is closed and the communal facilities of the kitchen/toilets are therefore not available.

This is something I was already used to as I spent over 6 years working from home in my previous position as Clerk, however without the addition duties of home schooling!! The Deputy Clerk, Derek, is also working from home, although he was mainly home based prior to the current situation.



Playground facilities were closed via Government Guidelines in March and sadly these facilities are still having to remain shut. It was disappointing that signage, tape etc was removed from the playground and recreation ground on several occasions. This has now forced the Council to lock the gates of the playgrounds and put further signage inside

Continued ➤



mywoodflooring






www.mywoodflooring.co.uk
 sales@mywoodflooring.co.uk
 07788 582 782
 45 Hassocks Road, Hurstpierpoint BN6 9QL
 Checktrade.com



**RELIABLE & DEPENDABLE
CAR GARAGE SERVICES**

✓ **Car Service** **Opening Hours**
 ✓ **Car MOT's** Monday-Friday 08:30 to 18:00
 ✓ **Car Tyres** Saturday -08:30 to 13:00
 ✓ **Car Exhaust**
 ✓ **Car Brakes**

Unit 12-13 Sheddingdean Business Centre,
 Merchants Way Burgess Hill, RH15 8QY
 Phone: 01444 480606
 info@ellismotors.co.uk






**Local TV Aerials,
Satellites & CCTV**
 Installation, Repair & Realignment of
 all types of Aerials and Sky Dishes

**Fault Finding Phone Points Freeview HD
 Freesat HD TV Wall Mounting
 30 Years Experience Fully Insured**
**Freephone: 0800 8021791
 Brighton: 01273 917736**

Checktrade.com    

enquiries@localtvairialsandsatellites.co.uk
 www.localtvairialsandsatellites.co.uk

20% DISCOUNT
 for all customers
 with this advert



South East Tankers

**For all your septic tank, treatment plant
and cesspool emptying needs.**

Look at our prices

Up to 1000 gallons removed for only £115
 Up to 1500 gallons removed for only £155
 Up to 2000 gallons removed for only £195
 Up to 3000 gallons removed for only £245
 Up to 4000 gallons removed for only £310

These prices are for all customers whether its a 'one off'
 empty you require or you would like your tank emptied
 on a regular basis, no signing contracts, to get the best
 price which leaves you in control as to how often you
 want your tank emptied.

So why pay more ?

We are proud members of
 checktrade.com so please visit
 the website to check for yourself
 how good we are.

You can book an empty by
 calling the office on

01444 250712

Mobile 07859901870

Or book your empty online at:
www.southeasttankers.co.uk

Checktrade.com



and outside to advise people it should not be used and currently no safety checks are being undertaken on the equipment. The Council will of course open these facilities when we have the authorisation to do so from the Government. It is pleasing that our grounds contractors are continuing to maintain the Recreation Ground so that people can enjoy the use of the facilities, although obviously having to respect social distancing at the same time. It is good to see that the tennis courts are still in operation, which are of course managed

by Ditchling Tennis Club and even with social distancing it is possible to play this game.

Sadly, of course many other sports have been affected, with no cricket or archery being played on the Recreation Ground. The Ditchling Archery Club have been in contact and are looking to see if it is viable to start up again in the not too distant future and I believe that cricket nets are in use as long as conditions of use are complied with. At least some recreational sports can carry on even though this is of course limited.

Of course, we all hope that things can return to some form of normality soon and as I write this, we are hoping that other business can open their doors and some sports can return behind closed doors, so we have to continue to remain positive for the future.

If anyone has any queries in regards to any of the above information, please do get in contact with me.

Sarah Mamoany

Ditchling Parish Council Clerk

Simply Blinding

Our advice, ideas and quotations are without cost or obligation.

We are the local, family run shutter and blind company, with over fifteen years' experience. PFI accredited and experts in somfy motorised systems. Approved by local trading standards via the office of fair trading "buy with confidence" scheme.

Call us now for a free no obligation visit on 01273 880 480
jamie@simplyblindingltd.co.uk | www.simplyblinding.co.uk

Station Road Carpets

Your local flooring specialists

CARPETS-VINYL-LVT-WOOD-LAMINATE

**15%
OFF**



**15%
OFF**



15% OFF
with this advert*



FREE MEASURING AND ESTIMATES

Price match promise within a 10 mile radius of our three stores across Sussex. Visit us in store or online to find out about our latest offers and promotions.

8 Longridge
Avenue
Saltdean
01273 302499

45 Station Road, Burgess Hill
01444 235522
Monday – Saturday 9-5

41 Sussex Road
Haywards
Heath
01444 884265



www.stationroad-carpets.co.uk

*not in conjunction with any other offer. Discount of materials only, does not include stock flooring.

Beacon Parishes Covid-19 response

In early March Erica Titcomb and a group of energetic, like-minded friends from Ditchling realised that there would be many residents isolating because of Covid_19 who would need help with everyday tasks like essential shopping and prescription. This 'Covid group' quickly got in touch with the existing Beacon Good Neighbours (BGN) scheme and the Beacon Parish Covid-19 Response Group was born.

There was only time for one face-to-face meeting before lockdown well and truly hit and it was agreed to use the BGN helpline number and administration system covering all the Beacon parishes – Ditchling, Westmeston and Streat – while the Covid group provided new volunteers.

Thousands of new leaflets were printed and a door-drop to every house in Ditchling, Streat and Westmeston was carried out by 30 volunteers, with the support of the Ditchling Society.

Within two weeks more than 60 'neighbours' in the villages had registered for help and a further 70 new volunteers had come on board. Those needing help were paired with volunteers who lived close by, so reducing the need for travel. John Wood, one of the BGN co-ordinators, said: 'I would like to give credit to Philip Eckstein, who found a way of plotting the positions of all the volunteers on a map of the district, and this really helped to pair up neighbours with nearby volunteers.' Unsurprisingly, help with getting provisions and prescriptions have been the most widely-requested services. John Lord, who has been self-isolating with wife Denie, said: 'It's been a terrific help to us and it's so nice to have contact with our volunteer who is so willing and supportive.'

Of course, it has been an equally positive experience from the volunteers' side. Shirley Crowther who volunteers said: 'I have found that helping others through the lockdown actually helped me by feeling I could do something for our community during a time when our world had been so changed.'

Other important services that the Covid/BGN committee has organised are the delivery of prescriptions to homes from



Ditchling Pharmacy (thanks to Nicky and John Jenkins) and the delivery of around 25 weekly shopping orders from Budgens direct to doorsteps (thanks to Helen and Sally of Ditchling Gin and to Budgens who offered this ordering service). Erica and committee members Sue Marshall, Donna Gunn and Hannah Loram have also been managing the queues outside Budgens, which has been much appreciated by the local shoppers.

The Covid/BGN committee meets once a week via Zoom to review progress and deal with any issues. 'It was very busy in the first few weeks and we've had great feedback' said one of the original BGN co-ordinator's Edwina Rowling. 'We will be ready now for whatever happens in the future.'

You can call the helpline on **01273 921668**.

Philip Eckstein

BGN/COVID group co-ordinator



SUSSEX
PROFESSIONAL
SERVICES

Tel No. 01273 569120
Mob. 07704 973357
info@sussexprofessionalservices.co.uk

We are a friendly and local firm with over 20 years' experience, providing all the accounting and tax support your business needs.

Offering competitive rates:

- Personal tax returns
- Business accounts
- VAT returns
- Payroll

(including auto enrolment processing and CIS Returns)

Other services include:

- Bookkeeping
- Business start up and registration
- Accounts software installation
- Excel training and support.

Contact us now for a free initial consultation.



Let Pascal clean your oven so you don't have to!

We clean all oven types including Aga, Rayburn & Range cookers
We clean all models of extractor hoods, oven hobs, microwaves & BBQ's
Environmentally friendly, nontoxic & fume free
Full trained & insured technicians
Fixed pricing & no hidden surprises

Call Pascal on 01825 722496 or 07432 778369

pascal@ovenrescue.co.uk

www.ovenrescue.co.uk/haywardsheath

Prices from £50



BANK HOUSE ELECTRIC GATES

We are pleased to provide a variety of traditional & contemporary gate styles to suit our clients specific requirements

A total installation service for all types of timber or steel automatic gates, barriers or bollards, each system designed to meet your specific requirements.

Advice on all aspects of the gateway including Audio/Video entry systems, CCTV and all styles of gates, posts and pillars.

We also provide kits for self installation.

Servicing for existing systems is available.

**CAME BPT GOLD INSTALLER
MULTIPLE AWARD WINNERS**

For a colour brochure and no obligation quotation call

01273 494807 info@bankhousegates.com



Sumptuous curtains and interiors
Custom made curtains, roman blinds and soft furnishings
Cushions, headboards, bedspreads and upholstery
Roller, vertical and venetian blinds, curtain poles and tracks
Complete service for design, advice, quotation and fitting, in the comfort of your own home



**East Barn
Interiors**

01403 865655

www.eastbarninteriors.co.uk

design@eastbarninteriors.co.uk

By apt:

East Barn, Brownings Farm, Station Road, Cowfield, Horsham, RH13 8DE

The Turner-Dumbrell Foundation

Like many businesses in the village the tenants of the workshops at North End have been hit hard by the coronavirus lockdown, but as their landlord, the Turner-Dumbrell Foundation is doing all it can to support them.

At the time of writing, 10 weeks after the lockdown began, the easing of restrictions had enabled about 50% of the units to reopen – including leather handbag maker Jane Hopkinson and furniture restorer Andrew Burston. More are expected to follow in the weeks ahead and they would all welcome visitors. But the lockdown came at one of the most crucial times of the year for many of the businesses, because it meant the cancellation of the Brighton Festival, which attracts many visitors to the workshops.

The Turner-Dumbrell Foundation reacted initially by reducing tenants' rents by 50% during the first quarter, which runs from March to the end of May, and then extended the reduction to the second and third quarters of the financial year. It has also guaranteed there will be no increase in rents up to March 2022. All of these decisions were taken as early as possible so that tenants could plan ahead. This will mean there is less money to invest in the upkeep of the premises, and to fund the grants the trust gives out to local good causes, but the trustees wanted to do all they could to support the artists, makers and therapists at the workshops, some of whom have been tenants for many years.

Over the past five years the trustees have authorised the spending of more than £70,000 to bring the workshops up to date with current health and safety regulations with particular emphasis on fire regulations and power supply, and to refurbish the exterior of the buildings in keeping with their original use. One of the maintenance projects that is currently being considered is the replacement of the roof of the workshops. Consultants have warned that action will need to be taken in the next two to five years, and trustees had the first discussions about what should be done at their meeting in January.

One of the options being explored is re-roofing the workshops with solar collecting tiles, which would enable the trust to provide its own power and sell it to its tenants.

This would be more expensive than simply repairing the roof, but would be more in keeping with the trust's ethos and could be more cost-effective in the long run.

Another long-term project at the workshops is the management of the grounds to make them more wildlife friendly. Areas of grass are being left longer to encourage wild flowers and other plants such as nettles to attract butterflies and other insects, and while the pond area doesn't hold water through the dry months it provides a habitat for damp-loving creatures and pond plants.

The lockdown has also had an impact on planned trustees' meetings. The AGM, which was due to take place on May and would have considered this year's grant applications, had to be postponed. As soon as it is practical the AGM will be rescheduled, and decisions on grant applications will be made at that meeting.



To advertise please call
01843 269513



A new chapter



We are delighted to welcome our loyal customers and new clients back in-store for routine eye examinations, along with any emergency or essential care.

Various measures have been put in place to keep you safe and will be explained to you in full before your visit.

Make an appointment by calling 01273 843946 or by booking online at www.hassockseyecare.co.uk

Don't forget you can also visit our online shop to browse and order prescription eyewear, sunglasses, accessories and contact lenses.

www.hassockseyecare.co.uk/shop-now

Hassocks Eyecare Centre, 17 Keymer Road, Hassocks, BN6 8AD



We specialise in extensive home transformations, but are happy to discuss any other renovations you might be looking to undertake. Please visit our website to discover more about the work we do and more importantly, what just a few of our satisfied customers have to say about us.

Contact us now!



COMPLETE BUILDING SERVICE



To see other projects we have worked on visit our new website www.stylorenovations.co.uk

FREE ESTIMATES • SITE SURVEYS

Call Jamie at Stylo Renovations on 01273 634846 / 07766 914174

National Park introduces inspiring scheme to connect families with nature

An exciting new initiative launches today to help connect families with the joys of nature through fun learning activities.

Inspired by the “founding father” of the National Park movement, John Muir, the South Downs National Park is announcing a new scheme that will help families learn more about the amazing natural environment.

Whether at home, in the local park, or in the area of the National Park near where they live, families will be able to do a range of nature-based activities and work their way towards a Family John Muir Award.

The South Downs National Park Authority has teamed up with conservation charity John Muir Trust to run the prestigious internationally-recognised environmental award, which is focused on connecting with and caring for wild places.

The activities programme is fully adaptable for each family's circumstances, whether they are shielding vulnerable family members, have access to green space or not, or going to work or school.

All people have to do over the next few months is 25 hours or more of fun activities which help them discover, explore and do something to care for a wild place, and then share the experience with others.

Those who sign up will be sent regular ‘ideas’ newsletters that will be full to the brim with activities to choose from.

Example activities include:

- Building a “bug” hotel in your garden.
- Growing something you can eat on your windowsill at home.
- Watching a wildlife video about the National Park.
- Going for a walk in the local park and surveying birds and other wildlife seen en-route.



- Nature-based craft activities such as making a wild snake bookmark.
- Finding how many different shaped leaves there are in your local green space.
- Sharing your discoveries with others by text, film, over the phone, or through social media.

Siân Jones, Families Outreach Officer for the South Downs National Park, said: “We’re really pleased to be launching this new initiative which will inspire people of all ages to connect with nature and take a more active role in caring for it.

“Along the way families will also discover more about the legendary John Muir and explore the wonders of the South Downs National Park – whether that be immersing themselves in its natural splendour or from the comfort of their homes. The beauty of this awards programme is its flexibility.

So your wild place might be a window box, your garden, the tree outside your window, the plants that grow through the cracks in the paving stones, or the park around the corner. This is the opportunity to get to know more about the wildlife that is right on people's doorsteps."

Families who complete the 25 hours of activities will receive a special certificate to recognise their achievement. The initiative is being supported by the South Downs National Park Trust, the official charity of the National Park.

The award can be completed indoors or outdoors and participants should follow the advice of "restraint, responsibility and respect" on enjoying the National Park safely: www.southdowns.gov.uk/national-park-authority/our-work/coronavirus-covid-19-update/

For more details and to sign up to the initiative: www.southdowns.gov.uk/learning/john-muir-award/achieve-the-family-john-muir-award/



Doing something for others, does something for you

Become a Sighted Guide volunteer

It's true – volunteering makes you feel good. 99% of our volunteers would recommend volunteering with Guide Dogs. "It's a privilege to volunteer and it makes me feel I've done something worthwhile" Kate, Sighted Guide volunteer.

Helping someone with sight loss get out and about to go shopping, use public transport and gain confidence can make a real difference. Can you spare a few hours a week to change someone's life?

Register to volunteer at www.guidedogs.org.uk today, or Book your My Guide Training today.

Induction and training sessions run throughout the year in various locations across Kent and East Sussex. To book your place contact us on 01189 838 711 or email nicola.schwarz@guidedogs.org.uk



With the constant increase in Fuel prices, BSW can save you money with your fuel bills.

Your local Heating and Renewable experts, keeping Sussex warm for over 50 Years!

- Reduce your monthly energy bills
- Reduce your greenhouse gas emissions
- Claim the RHI – Renewable Heat Incentive & receive tax-free cash payments for 7 years

To find out more, telephone:

01444 831138

www.bswenergy.co.uk



APPROVED INSTALLER



*dependant on size and position of installation

Horticultural Society Spring Show

This is a report of our little children's competition that we held in the school on the afternoon of Monday 16th March.

Sadly, due to the coronavirus Covid 19 outbreak, Saturday's Spring Bulb Show had to be cancelled.

Some members of the Horticultural Society visited Ditchling Primary School to see a display of the entries that the children had made and grown. They had put in a lot of effort with their artwork, and in growing their bulbs, and had been very disappointed not to be able to take them to Saturday's show. They enjoyed being able to show off their efforts to their classmates and parents instead.

Nancy Strafford, a member of Ditchling Horticultural Society committee, judged the entries and presented the winners of each class with a rosette. Everyone who entered received a sticker. There were some magnificent daffodils on display, and some very creative seed collages by the younger children. The older children had made some beautifully illustrated poster designs for the Summer Show. It was hard to pick winners!



Beacon Parish Covid19 Response
(for residents of Ditchling, Streat & Westmeston)

Need Support?

If you know of someone who is self-isolating or just not wanting to venture out, and who would like some support, ask them to call and leave a message on
01273 921668

Want to Volunteer?
Sign up through our Facebook group
Beacon Parish Covid19 Response

Beacon Good Neighbours and The Ditchling Society are supporting a team of local known volunteers to help anyone who might be affected by the Corona Virus outbreak.
www.beacongoodneighbours.org

HM Government **NHS**

Coronavirus

How to get tested

If you think you might have coronavirus you can now have a test.

The signs of coronavirus are:

- High temperature
- Or a new and continuous cough
- Or loss of smell or taste

If you or anyone you live with has any of these signs then you must all stay at home.

You can find out how to get a test and how long you need to stay at home at nhs.uk/coronavirus

STAY ALERT > CONTROL THE VIRUS > SAVE LIVES

Co-Option of Parish Councillor

Ditchling Parish Council are looking for new members to join the Parish Council.

To be eligible you must qualify under one of the provisions of Section 79 of the Local Government Act 1972, i.e.

- be on the electoral register for the Parish;
- have owned or rented land in the Parish for 12 months;
- have worked in the Parish for 12 months;
- have lived in the Parish or within 3 miles of the Parish boundary for 12 months;
- must be 18 years of age or over.

Please note members are bound by the Local Government Code of Conduct.

The Parish Council are responsible for managing the Parish precept, considering local planning applications, maintaining the Recreation Ground, Burial Ground and its amenities and representing residents' views and interests locally and nationally. Meetings are held once a month on Monday evenings; with other Committee meetings occasionally throughout the year. The Council has lots of interesting projects in the pipeline and your help could assist with moving these projects forward in the future. We would very much like to hear from you if this vacancy sounds of interest to you. If you would like further information please contact the Parish Clerk.

**WOULD YOU LIKE TO HELP IMPROVE,
DEVELOP AND PROTECT YOUR LOCAL
COMMUNITY FOR THE FUTURE?**

**TO APPLY PLEASE SEND AN
INTRODUCTORY LETTER WITH DETAILS OF
YOUR BACKGROUND, EXPERIENCE AND
WHAT YOU FEEL YOU CAN BRING TO THE
COUNCIL TO THE PARISH CLERK DITCHLING
PARISH COUNCIL
PARISH OFFICE 18 LEWES ROAD DITCHLING
BN6 8TT
parishoffice@ditchling-pc.gov.uk or
contact the Clerk for further information
and an informal chat**

**Closing date for applications
21 July 2020**

The Council will be co-opting at the Parish Council remote meeting to be held on 27 July 2020 at 6.30pm. All applicants are invited to attend to introduce themselves to the Council to you. If you would like further information please contact the Parish Clerk.

Parish Clerk - 01273 844733

**WE ARE ALWAYS LOOKING FOR BEAUTIFUL
PHOTOS OF DITCHLING SO IF YOU THINK YOUR
PHOTO WOULD LOOK GOOD ON THE FRONT
COVER OF OUR DITCHLING COMMUNITYAD
MAGAZINE, THEN PLEASE EMAIL
MANDI@COMMUNITYAD.CO.UK**



CommunityAd
communityad.co.uk

Advertise your business with your local community

01843 269513 info@communityad.co.uk



Ditchling History Project is your local history society. We research all aspects of the parish's history: its families; its buildings; its industries; its arts & crafts; its church & chapels; its clubs and societies. We maintain an extensive and growing database which we aim to make available online.

We are 'project' based because we never cease investigating the history of this amazing parish. Historical records, tythe maps, census returns, trade directories, house deeds and word of mouth are some of our many sources. We are always ready to learn from those who know something of Ditchling's history both past and recent. We welcome anyone who would like to join us. Our website is www.ditchlinghistoryproject.org and complete the questionnaire you'll find there.

Project News

The shop project has been continuing with a focus on the 1920s. A search of our database has revealed all sorts of new surprises. The decade saw the loss of the saddlery and the rise of the motor garage, carriers and taxi services. There were tea rooms and confectioners a-plenty! A pharmacy opened for the first time and Ditchling continued to maintain its three grocers, three butchers, two draperies and four pubs.

THEN

This should be, but for the coronavirus, one of Ditchling's biennial fair years but what is their origin? In 1312 Edward II granted John de Warenne, Lord of the Manor, a charter to hold fairs on his estates "and one other market each week on Tuesday at his Manor of Dychehyng in the same county and one fair at the same each year for three days duration (viz. in the eve and

in the day and in the morrow of St Margaret the Virgin).....". Fairs had close associations with patron Saints, in our case St Margaret of Antioch. Worship was an integral part of Fairs. They were Holy Days.

The Fair and market attracted people from far afield particularly from the weald north of Ditchling which was not so well served. Ditchling was not the first in Sussex to have a charter. The earliest were in the 11th century and were on or near the coast or on important trading rivers. The 13th and particularly 14th centuries however saw a big increase in the number of charters being granted and a move into inland Sussex.

The reason the King granted a nobleman a charter had to do with what the media today might call "rewarding" and "buying" loyalty. John de Warenne had supported the King initially during his quarrels with his Barons and after a slight wobble in the middle had returned to the King's favour. He was 'rewarded' through the charge he could impose on those running stalls and he could ensure that no other market or fair could be held in competition.

In turn he bought the loyalty of his employees and the people of his manor. The word Fair derives from the Latin 'Feria' which means Festival or Holiday and who doesn't like a holiday particularly if there is also entertainment?

Although the main objective of the fairs was trade, every fair contained entertainment. It typically divided into three – the indoor and outdoor participatory activities and the spectator entertainment. Just how much of this applied to Ditchling's Fairs we don't really know. For the traders the entertainment served the purpose of attracting a crowd and typically included musicians, acrobats, stilt walking, morris dancing, wrestling, archery, skittles, board games, feasting and fools.

Continued ➤



dhp

Of the early Ditchling fairs we have little information but we have the accounts of two 18th century diarists:

Here is Thomas Marchant who visited fairs all over central Sussex.

The 2nd October 1716 Tuesday. A showry day. A Fair at Ditcheling Common. I was at the Fair and bought 8 runts of John Jones at £25-4s, paid him for them...

The 25th March 1717 Munday Lady day. Lady day. A wet day. Ditcheling Fair. Paid Mrs Courthope 10d for a payr of gloves she bought at Lewis for Molly Balcomb, some time ago...

John Burgess suggests that there were two fairs and that each lasted for a day. He dealt in skins but there were few other trades he couldn't turn his hand to including selling nuts and ginger bread!

Here's what he had to say:

Wednesday April 5th 1786: 'Work shop & washing the Meeting House &c it was our Fair day very small Fair'

Monday October 13th 1788: 'Was at Home our Fair was today. Supposed to be about 100 Hogs & not above 4 or 5 Sold they were not so high as they had been for some time before.'

Monday April 6th 1789: 'our fair day I kept fair down at Mr Cox shop &c'

October 12th 1789: 'this day was our fair day so was at home in ye shop &c Very wet morning but fine day.'

Both diarists remind us of the strong commercial aspect of these Fairs but suggest that the size of Ditchling's fair had by then declined.

By 1839 Pigot's Directory was recording: 'A market was formerly held here, which has long ceased to be attended; but there are two fairs tolerably well frequented – one on the 5th April for sheep, and 12th October for pedlery.

In 1901 village historian Henry Cheal wrote '....The weekly market has long since been discontinued, and the three days' fair forgotten....' The advent of the railway and canals enabling trade and travel between major urban centres seem to have contributed to the decline of Fairs in general.

NOW

However, the fair was in many ways replaced by the Horticultural Society's annual vegetable and flower show. Founded in 1822 the society can lay claim to being the oldest in the UK. Its shows were similar to the fairs with various forms of entertainment including competitions for best hand made nightdresses and darned stockings! Try that today!

Historian Cheal said "...this annual event which takes place in July, is even now the principal social gathering of the year."

There was also an annual village horse show so, in a rather different way, the two 'fairs' tradition continued into the 20th century. These shows were held in Star Field behind the North Star pub.

These 'events' kept going during WW1 but on a modest scale without much entertainment.

However, writing in 1922, resident playwright Amy Sawyer, recorded that the Fair held that year succeeded one that had been 'revived last year (.e 1921] after a lengthy lapse'. The Horticultural Society decided in 1922 to put austerity aside and celebrate its centenary in style.

The Fair was revived again after WW2 in 1948 and the biennial fairs introduced. Proceeds from the Fair went towards equipping the new recreation ground. "Miss Molly Wake, a tall, fair haired Land Army girl was chosen as Fair Queen and two brunettes as her attendants".

And "The Revd Crookshank won the prize for the largest biceps and took part in the Fancy Dress parade as a fisherman and carrying a large fish".

The entertainment featured a 'Ladies Ankle Competition' but by 1952 it had become a 'Two Ankles Competition' for both genders! This time Revd Crookshank set himself up on a stool outside his vicarage as a one-legged street artist with the notice "one leg, one wife, eight children, but I am giving all the receipts today to the Fair....later he had to leave his pitch and left a message "Back soon, union lunch hour". (see photo)



Revd Crookshank

1953 was notable as the first occasion on which the Proclamation written and inscribed by Dr Linton Bogle and read by Donald Sinden was used to open the fair, as it has been most years since. For many years it was proclaimed from the balcony of Vine Cottage by the Chairman of the Parish Council.

A newspaper article tells us that *"The 1964 edition of the Fair will be remembered most for the Ditchling Dinosaur. A terrible sight indeed was Dennis the Ditchling Dinosaur – he made the Loch Ness Monster look like a tiddler... one breathless local put forward the theory that Denis had been lying at the bottom of the village duck pond for several thousand years; then when he heard that yellow and black 'No Waiting' signs were going to be put on the cross roads he had risen up to strike a blow on behalf of his home village. He was 20 feet tall and from his crimson nose, from which belched clouds of acrid smoke, to the tip of his mighty tail he was 35 feet long. He had ten-inch teeth and as he lumbered through the village, he gave out a fearful roar"*.

It was about this time that the Pied Piper became a regular part of the fairs leading the children to the fair ground. In the 1970s the new village green became the fair ground.

To advertise please call
01843 269513

Air Ambulance
Kent Surrey Sussex

Keep us flying high

Would you like to know more about Air Ambulance Kent Surrey Sussex or maybe even get involved?

- Learn about how the charity works, innovates and saves lives with one of our informative talks. Book one of our volunteer speakers to visit your group for free and find out more about our life saving work.
- Volunteer for one or more of our varied roles and help us go above and beyond.

If you would like to find out more please get in touch – we would love to hear from you

aakss.org.uk
 hello@aakss.org.uk
 01634 471 900

LIFE SAVING CHARITY
NUMBER 1024367
FUNDING BY LOTO

Checkatrade.com

MOOVA FOR ALL OF YOUR REMOVALS & MAN 'N' VAN NEEDS

CALL US TODAY ON 07549 006390
WWW.MOOVALTD.COM

GUMTREE 4X4

Independent specialists in Land Rover, Range Rover, Discovery and Freelander.

Situated in the heart of Mid-Sussex our friendly, enthusiastic staff can assist you with all your Land Rover requirements.

OUR SERVICES INCLUDE:

- MOT Preparation
- New spare parts & accessories
- Servicing & repairs
- Off road equipment
- Computer diagnostics
- Expedition preparation
- Chassis replacement
- Diesel & petrol engine replacements
- JLR service history correctly updated on line

Tel: 01444 241457
Email: admin@gumtree4x4.co.uk
www.gumtree4x4.co.uk



Ditchling & District Branch Royal British Legion

Hello Everyone

Well, these are indeed very unusual times for us all. Before the 'lockdown' your Branch had been planning a VE75 day of Commemoration on Ditchling Village Green for all to attend.

Posters had been prepared, Bobby duBois and the Shoeshine Boy booked for your musical entertainment, scrumptious afternoon teas with our usual homemade scones and delicious cakes being planned. Ditchling Gin were also going to be present for all of you who prefer something a little stronger!! The Parish Council had ensured that the War Memorial grass was looking pristine and that 'our Boys' (metal representatives of the three services) were back on duty in the three corners. However, this was not to be.

So we looked at Plan B! We had hoped that our Standard Bearer, Colin Marshall, would have been able to bring the Standard to the Ditchling War Memorial on Friday 8th May with just the Committee present to honour and remember those who had served but did not return with a two minutes silence followed by wreath laying. But with emails from RBL HQ this again was not deemed possible in view of the Covid 19 situation.

How could we Remember? Just one Committee member from Ditchling, one from Streat and Churchwarden from Westmeston were asked to lay a wreath at each of the War Memorials following the two minutes silence. At Streat and Westmeston some cyclists and walkers also stood by to remember. In addition the Union Flag was flown from St Margaret's Church and Westmeston Church was floodlit. It was good to see so many flags and bunting out, and street parties (socially distanced of course) so that this very special day was remembered.

As to future events well Armed Forces Day is on 27th June and we hope to have the



Union Flag flown again from St Margaret's. Looking further ahead to Remembrance in November this again will be dependent on Government guidelines if we are able to hold our usual Poppy Appeal, Poppy Lunch and Remembrance Parade.

You may be interested to know that throughout the lockdown RBL have continued to help Veterans and their families and all RBL Pop-In Offices have remained open in some form to continue this. As you may be aware many of those who need RBL help suffer from PTSD and times like this can be particularly hard with the need to be isolated from loved ones and friends. Please remember RBL is always there to help.

Your Branch has a Facebook Page – Ditchling & District Branch Royal British Legion. Please have a look at this. Information about national events as well as Branch information can be found here. In addition you can find phone numbers of how to contact RBL. At Branch level remember we are available for any help needed or if you just want to have a chat. My contact number is **01273 845319** and if I cannot help I will find someone who can.

Please stay safe and well. On behalf of your Branch Committee

Margaret Bovill

Branch Hon Sec and Poppy Appeal Organiser

To advertise please call
01843 269513

ardingly
activity centre
est. 1985

ARDINGLY RESERVOIR
Something for everyone

Adult and junior courses

Sailing

Windsurfing

Kayaking

Parties

Hire a Stand Up Paddle Board or Sit On Top Kayak
Enjoy a beautiful waterside walk
Café

01444 892 549
www.ardinglyactivitycentre.co.uk

1st Ditchling Scout Group

All sections have had a very busy term with a wonderfully varied programme.



Beavers have been doing lots of work towards badges varying from learning to sew to their Science badge and also completing their First Aid Badge. They have also tried some Yoga and Ballet.



Cubs have been very busy too including a trip to Burgess Hill fire station, a night hike and a trial Ballet session. The Cubs were quite surprised how hard it was to do



and thought they might be a bit stiff in the morning! The Cubs also had a session of air rifle shooting, campfire cooking and learning about shelters.

The Scouts have been doing lots of good old fashion basic scouting skills including hiking, hike cooking, navigation and knife skills. The Scouts have also been continuing to learn to climb.

Some of the scouts have been taking part in the Overland Hike practise sessions run by the District. This a challenging hike for any scout including an overnight in a tent which takes place in March! It has to be said that conditions have been testing this year!

Finally, a huge Thank you to all the Cubs and Scouts that took part in our bag packing fundraiser at Budgens before Christmas and to all those parents and children that helped with the Christmas Post.

1st Ditchling Scout Group - March 2020

New Grit Bin

In wintry weather, Underhill Lane is neither gritted nor cleared of snow and ice. Heavy snowfall has in recent years made the lane near-impassable for days, and even a cold snap can freeze the water that streams from the Downs.



The steep Z-bend near the Beacon Road can be particularly hazardous in icy conditions – even 4x4 vehicles have overturned and ended in the bank (see photo).

Residents of Underhill Lane set out to discover how to get a grit bin installed for use when the road conditions became dangerous. East Sussex Highways department made it clear that it would not fund any new bins. If a new bin was to be installed on the highway, then it would need to be licenced by them – at a fee, of course. The department would also need to supply the bin and supervise its installation (again, at a cost) and any replenishment of the bin would need to be arranged through the department's contractors (the current cost for a refill is £108).

The residents approached Ditchling parish council for help at the end of 2019 when financial grants for 2020 were being



considered. In the meantime, discussions with East Sussex Highways unearthed the fact that, if the bin was sited on private land rather than on highway land, all the bureaucratic paraphernalia disappeared and we could organise and manage a bin ourselves. The parish council approved our request for funds and we were able to report that the costs had been reduced by a bit of self-help, as a neighbour offered us a site for the bin on private land near the roadside. Within two weeks we had bought, installed and filled a new grit bin.

The winter this year has been wet rather than icy, but at least we now have some resources to deal with snow and ice when they return. Underhill Lane residents will maintain and refill the bin as necessary. We would like to thank Ditchling parish council for its help; it remains a shame, though, that the responsible highways authority is unable to fulfil such a basic safety responsibility.

Steve Dempsey

Chair, Underhill Lane Community Association

AMS
PROPERTY
SERVICES

PRO
PLASTICS

ALL YOUR
PROPERTY
NEEDS

- Facias
- Windows
- Doors
- Gutter Clearance
- CCTV Gutter Maintenance



07702 854373 01273 400162
www.ams-property-services.com

**Corniche**
SPECIALIST DRY CLEANING SERVICES

We'll take the
hassle out of laundry
& dry cleaning
01273 461 942
59 High St, Shoreham-By-Sea, BN43 5DE

FREE COLLECTION & DELIVERY
Book your
collection
NOW!

A message from our MP -Maria Caulfield



Farmers are the ultimate protectors of our countryside.

We have seen locally that when they can no longer make farming work for them financially, they sell up and housing developments emerge concreting over our green spaces. It is therefore crucial

that we support our farmers in succeeding and I am passionate that in Government this is a top priority for us.

Recently there have been a lot of rumours in the media with regards to the new Agriculture Bill, which sets out the future for British farming, and our food standards. I wanted to reassure you that much of the rumour and speculation is untrue. The UK will not be lowering its high food standards at the cost of cheap imports of lower quality.

As the Agriculture Bill progressed, we had a robust debate in Parliament and particularly on one of the amendments on international trade and food security that has been a concern for many people in the agriculture sector. The amendment put forward was well intentioned in ensuring that no food comes into the UK which undercuts British farming standards but unfortunately it was aimed at the standards of production rather than standards of product.

This amendment would not be allowed under WTO or EU rules and would have made any trade deal impossible with any country or trading bloc including the EU, US, Japan etc. It would also have scuppered current trade deals and restricted exports of British Farm produce as a result.

Instead we are using the Trade Bill to enshrine animal welfare standards into law and as it is coming to Parliament now, we are laying down the restrictions on the standard of products

so things like chlorinated chicken and cheap beef products cannot be imported to the UK. This means that for any future trade deals our British produced food will not be undercut by cheap imports, but it also gives British farmers more extensive exporting opportunities.

As each new trade deal comes forward, we will be able to set this out more clearly and with new rules to more easily identify country of origin and better labelling to help consumers we hope this will enable more British products to be consumed domestically.

I hope this provides some reassurance but do feel free to contact me if you have any concerns you would like to raise at maria.caulfield.mp@parliament.uk

UPDATE FOR LOCAL FARMERS POST BREXIT

The UK will leave the Common Agriculture Policy (CAP) as it leaves the EU. Under the terms of the UK-EU Withdrawal Agreement, most EU regulations governing CAP farm support will cease to apply to the UK from exit day. Therefore, as parliamentarians we are, in Parliament, setting a new legal basis to enable Ministers to continue direct farm support payments in 2020. The Direct Payments to Farmers (Legislative Continuity) Bill has been going through Parliament and it enables the Government to make Direct Payments to farmers for the 2020 scheme year– giving much-welcomed certainty to our farmers and food producers.

As a result, the Government has guaranteed the annual farm budget for each year of this Parliament with nearly £3 billion of funding provided for 2020. The UK Government funding of £2.852 billion will top up the remaining EU funding to match the total funding for direct payments that was available for 2019.

Continued ➤

After this, the Agriculture Bill will provide a new system of farm support, moving away from direct payments in England towards an approach where farmers are paid public money for the 'public goods' they produce – such as enhancing air and water quality, tackling climate change or improving animal welfare. Farmers and land managers will be supported over a seven-year agricultural transition period, giving them time to plan and adapt to the new approach.

From meeting with local farmers before the election, I know that the uncertainty surrounding farm payments and the new agricultural policy is a concern and that certainty of direction is top of the agenda. Now that a decision on farm payments has been taken, I will be holding another meeting for local farmers, being organised by the NFU and if this is something you are interested in attending do let me know by emailing: maria.caulfield.mp@parliament.uk

The Agriculture Bill, which will shortly be returning to the Commons, will see us move towards a new system that rewards farmers for enhancing the environment and producing the food we all enjoy in a sustainable way. I am keen that farmers from Lewes have their say and that the new policy works for them to ensure they have the stability and security they need going forward. Farmers are one of the key guardians of our landscapes and it is important that they are at the heart of decisions going forward.

COULD THE LEWES TO UCKFIELD LINE FINALLY RE-OPEN?

The vital Lewes to Uckfield rail line was closed in 1969. Not only did this cut rail services across the Lewes and Wealden districts but it

also closed an alternative diversionary route from Brighton to London. Since then there have been numerous attempts to re-open the line which is, more or less, still intact.

Now the best chance of re-opening the Lewes to Uckfield railway line in a generation has come about with the Transport Secretary Grant Shapps recently launching the Restoring Your Railway fund.

As a result, I am working with the BML2 campaigners (Brighton Main Line 2) on a bid as the Lewes to Uckfield line is eligible to be considered as part of the £48 billion Restoring Your Railways fund and we have submitted an expression of interest with the Government. A business case will need to be presented to the Department for Transport by early March setting out costs, levels of support locally, and the potential growth that could come from reopened lines. Following this, the successful bids will go through to a further stage with successful bids announced in the summer of 2020. The Government are keen to get things moving quickly on these lines to allow work to begin as soon as possible.

Since first being elected I have campaigned for the reopening of the Lewes to Uckfield line as another route for passengers from Lewes and the surrounding areas to get to London without having to use the Brighton Mainline. The re-opening of this line will take pressure off the current mainline and make rail more accessible to thousands of people along the route. I am working with the BML2 Project to make sure that we can grasp this opportunity and finally re-open the Lewes to Uckfield line.

For more information on the detailed plans do visit www.bml2.co.uk



Dame Vera Lynn 1917-2020



Ditchling Parish Council were saddened to hear the news that Dame Vera Lynn has passed away aged 103.

She will be remembered for her spirit, music and as a national treasure and will be in the hearts of our nation forever - an amazing lady who will be part of Ditchling Parish heritage and has brought so much to so many people throughout her long and caring life.

Dame Vera came to Ditchling after the 2nd world war, and prior to her move to her home in Common Lane, she lived in what were converted stables down by the village green. Dame Vera has always been a great supporter of events in the village and was the first patron of Ditchling Museum which she was proud to be associated with, and in which always took a personal interest. She was instrumental in the development of the village green itself and a tree was planted on the green in 2017 to mark the occasion of her 100th birthday. The Council will be looking to create a suitable memorial in the village to celebrate the life of this remarkable lady, to remember her to generations to come. She will always be a part of the village of Ditchling.

A book of condolence will be made available in the Parish when this is possible within government guidelines in the current COVID-19 situation.

Cllr Don McBeth

Chairman Ditchling Parish Council



We are an independent garage who specialise in the repair and servicing of **BMW, Mercedes and VW Audi.**

Our factory trained technicians have over 60 years combined knowledge and experience.

We use the latest diagnostic equipment to cater for all your needs.

01444 242600

www.pbmtechnicalservices.co.uk

Richard@pbmtechnicalservices.co.uk
Unit 17, Ditchling Industrial Estate, Ditchling,
Hassocks, Sussex, BN6 8SG



Building, Maintenance & Roofing Specialists

With over 35 years industry experience

Roofing/ Tiling	Driveways
Fascias & Guttering	Patios
Complete roof replacement	Painting
Extensions	Decorating
Renovations	Joinery & Carpentry
Refurbishment Work	Plastering Rendering
Damp proofing	Landscaping
Kitchens/Bathrooms	Shop fitting
	General repairs

For a **free** building quote or estimate of repairs call:

01273 380914 or 07786 101912

info@clarkesbuildersbrighton.co.uk
www.clarkesbuildersbrighton.co.uk

Full liability insurance
Company reg: 09982598

Checkatrade.com

Ditchling Lawn Tennis Club



The re-surfacing of the Tennis Court at the Ditchling Recreation Ground was commenced in October last year and finished this March in time for the opening of the season in April. New nets and posts have been added and the fence has been cleared of vegetation.

The committee of the Club, Susie Harrison Treasurer, Keith Hine and Max Bolton Co-Chairmen, are volunteers. They are assisted by David Holmes our local postmaster who collects subscriptions and hands out the keys and by Shirley Crowther who designs and prints our posters and membership forms and court booking sheets.

The Club is run principally for the benefit of the Villagers and is affiliated to the LTA. Members have the option to join the LTA for free if they assign themselves to Ditchling LTC.

The decision to re-surface the Court was reached by the Committee after the publication of the proposals of improvements to the Ditchling Village Play Area and Recreation Ground in February 2017. Whilst these proposals did not mention the Tennis Court or the Club, the plan clearly showed the position of the Court directly adjacent to the area for which these proposals had been prepared.

The re-surfacing had to be fully funded by the Club since the Parish Council were not in a position to offer any financial support, although they were happy to support the idea and to help the Club by extending the duties of the contractors who maintain the Recreation Ground to clean, sweep and weed the Court during the summer months.

Having contacted several specialist firms and received quotations, the Club then approached the LTA for financial support. Unfortunately, due to the lack of a specific Junior Section and coaching for Juniors we were told that we were not eligible.

The quotation from the firm that was chosen, Academy Sports, was for circa £14,000. This amount was considerably in excess of the Club's Funds and would have exhausted the reserves, therefore outside help was needed. Applications were made to the Phillipson Trust and the Turner Dumbrell Foundation for help and in Spring 2018 the club was granted £8000.00 by the Phillipson Trust and £2000.00 by the Turner Dumbrell Foundation. These awards allowed the club to commission the work to be started at the end of the 2019 playing season.

Prior to the re-surfacing of the Court, Club membership stood at 60. This has now has increased to 120 members including a growing Family and Junior Membership.

There is no doubt that the availability of this facility within the Village during these difficult times has contributed to this increase in membership. As a result of this, the Club is now able to plan for setting up an on-line booking system and to consider how best to improve on what the Club offers and to increase the capacity.

County Council Report

Coronavirus Update

Unfortunately we are still seeing new cases of infection each day.

The Test Track and Trace is now only Test and Trace as the app promised by government is delayed and we are still seeing problems with testing such as when testing is done vital information such as the postcode of the person tested is missing!

Financial Impact of Coronavirus

ESCC is experiencing a huge impact on its finances with the gap in its budget estimated to be £23 million so far and this does not even include the increased costs in Social Care and on Home to School Transport which will be much greater than allocated for in the 2019/2020 budget. The impact will be felt into 2020/21 and beyond. The councils costs are rocketing, particularly on PPE (currently £725 k per month) so the longer this pandemic continues the worse the budget gap will be. Add to that there is significant funding uncertainty going forward because of the:

- Impact on our residents and on Council Tax collection rates;
- Impact of slowdown in house building and the reduction in the Council Tax base on income;
- Impact on businesses and on Business Rates collection rates;
- The confirmed delay to the Spending Review, Fair Funding Review and 75% business rates retention.

Household Waste Recycling Sites

They have been busy but are settling down now and the opening hours have now been extended a little. I continue to press for an agreement to be struck between East and west Sussex Council's so that those residents living closer to the HWRS at Burgess Hill for example can utilize that site rather than drive further to the Lewes site.

Schools

ESCC have been working with schools on the phased reopening. For primary schools this involves the return of reception, years 1 and Years 6, alongside the continued provision

of teaching for vulnerable children and the children of Keyworkers. Schools have been asked to continue to provide remote learning for those who are not scheduled to return. Secondary Schools have been asked to continue to provide a service to vulnerable pupils and the children of keyworkers and identify how they can increase contact with Year 10 pupils. Special schools are undertaking individual reviews of their pupils to identify how best to plan a return.



Digital Devices for Disadvantaged Children to access Remote Education

In April, the Department for Education announced a package of support for vulnerable and disadvantaged children and young people across England. It will provide digital devices (laptops and tablets) and internet access for some disadvantaged children and young people who do not currently. ESCC's allocation of 129 laptops and tablets is insufficient to meet all the demand from our eleven secondary and special schools. Additional funding of £65,500 has already been approved and they have ordered an additional 200 devices.

Adult Social Care

Supply of social care provision remains under real pressure in East Sussex and on 21 May 88 of 313 East Sussex care homes were closed to all admissions. They now have in place an integrated health and social care plan, which includes testing all patients before admission to a care home. Patients testing positive are supported through a period of isolation at either Bexhill Care Centre or in a community health unit before moving, when clear, to a care home.

Councillor Sarah Osborne

Oldland windmill

Roger Broadbent - Trustee

All but forgotten now, the Great Storm of November 1703 was the worst storm experienced in recorded history of the British Isles. Over 8000 people lost their lives. The damage inflicted on Southern Britain was so serious that many of the region's windmills were demolished.

'Above four hundred windmills were overset and broken into pieces, or the sails so blown round that the timbers and wheels have heated and set the rest on fire, and so burnt them down'

Daniel Defoe - The Storm

Today we take the availability of bread for granted, but for thousands of years it was the staple food for much of the world's population and remained so in England until well into the 19th century. With bread being so essential to survival, it is not hard to imagine that the sudden loss of flour production forced the urgent building of a replacement windmill on Lodge Hill.

The date of the earliest windmill on Lodge Hill is not known. However, the construction of Oldland Windmill was probably the direct result of the great storm in November 1703.

Built 120 years earlier than 'Jill' windmill was established atop the downs, Oldland Mill must have been an important supplier of flour to Ditchling. There cannot have been many alternative sources.

From 1703 until the early years of the 20th. century Oldland Mill continued to grind flour. When the mill eventually stopped producing flour in 1912 it was left to decay. It is something of a miracle that the timbers were not stripped away and the main cast iron wind shaft sold for scrap.

A truly remarkable team of volunteers has spent 40 years recovering and restoring the mill. In October 2008, for the first time in nearly a hundred years, flour was produced once again. The amount of flour now being ground equates to more than a tonne each year.

The continuous restoration and maintenance costs, together with the major cost of insurance, means we continue to have to raise funds. I appeal to anyone, who is willing and



able, to make a donation to our costs.

Please send a cheque, payable to '**Oldland Mill Trust**' To:- The Treasurer, Mr Geoffrey Miller
4, Charlton Gardens, Ditchling, Sussex, BN6 8WA
geoffreymiller@gmail.com

Why not become a member?

www.oldlandwindmill.co.uk

Regrettably due to the Covid-19 virus outbreak, Oldland Windmill will remain closed to the public for the foreseeable future.

During this difficult time any contribution to our funds will be gratefully received. Please contact Roger Broadbent **01273 841064**



**Home Refurbishment
Kitchens & Bathrooms**

01273 831802

enquiries@jamiestaffordbathrooms.co.uk



Art in Ditchling

Sir Frank William Brangwyn

Sir Frank William Brangwyn (12 May 1867 – 11 June 1956) was an Anglo-Welsh artist, painter, watercolourist, printmaker, illustrator, and designer. As well as paintings and drawings, he produced designs for stained glass, furniture, ceramics, table glassware, buildings and interiors, was a lithographer and woodcutter and was a book illustrator. It has been estimated that during his lifetime Brangwyn produced over 12,000 works. His mural commissions would cover over 22,000 sq ft (2,000 m2) of canvas, he painted over 1,000 oils, over 660 mixed media works (watercolours, gouache), over 500 etchings, about 400 wood-engravings and woodcuts, 280 lithographs, 40 architectural and interior designs, 230 designs for items of furniture and 20 stained glass panels and windows.

During the First World War, Brangwyn produced official war posters and made prints to raise money for the war effort, also serving as the President of the Royal Society of British Artists (1913-18). After the War, Brangwyn was elected a full member of the Royal Academy in 1919.

After visiting Sussex to paint the Downs in 1917, and in order to escape air raids in London, Brangwyn bought "The Jointure" in South Street Ditchling in 1918. He initially divided his time between his houses in London and Ditchling, but eventually settled permanently in Ditchling. In 1929 he purchased "East End Farm" in East End Lane, and in 1931 "The Nest", in the Dymocks. Brangwyn built three cottages on land belonging to East End Farm, fronting East End Lane.

In his final years, Brangwyn lived a reclusive life in Ditchling, producing art according to his own sensibilities and disregarding contemporaries' trends. His unique artistic abilities were recognised with a knighthood in 1941, and in 1952 he was the first living academician to have a full retrospective at the Royal Academy.



Self portrait



From My Window in Ditchling c.1925



Win £250 in the South Downs National Park Photo Competition

The South Downs National Park photo competition is now open, with a first prize of £250 on offer to the amateur or professional photographer who best captures this year's theme of 'My tranquil haven'.

To mark the 10th anniversary of the National Park, the photo competition is also being extended this year to include a youth category for budding young photographers. For the main adult category, judges will be looking for images that showcase the tranquil beauty of the South Downs – whether that be a stunning landscape, woodland, or piece of history.

Those capturing images of the National Park should adhere to the government guidance of social distancing and avoiding busy hotspots. The top prize for the adult category will be £250, with a runner-up prize of £150 and third prize of £50.

There will also be a wildlife sub-category, with judges looking for images capturing the amazing wildlife of the South Downs and the winner in the adult category will receive £100. Meanwhile, there will be two further categories for budding young photographers – 10 years and under and 11 to 17. There will be a winner for the main theme of 'My Tranquil Haven', as well as best wildlife image, and the winner of each of these categories will receive a Colombia outdoors rucksack and a Colombia beanie.

Award-winning photographers Rachael Talibart and Finn Hopson are returning once again to judge the 2020 competition and the panel welcomes acclaimed Lewes-based photographer Carlotta Luke.



Nick Heasman, Countryside and Policy Manager at the South Downs National Park, who chairs the judging panel, said: "We're excited to be able to launch our 2020 photo competition and it comes at a time when many people will be venturing into the outdoors for the first time to discover all the joys of spring and summer.

"Our priority is that people stay safe while taking photographs so please do follow the government guidelines of strict social distancing, avoiding busy hotspots and respecting local communities and farmers. "The Covid-19 pandemic continues to be an extremely challenging time for everyone.

During these difficult times, our wonderful National Park remains a tranquil haven, with the power to uplift people with the sight of a stunning vista, a beautiful bird or a shimmering dew pond.

"Photography has the ability to bring joy to all ages and we're looking forward to seeing images that really brighten people's days." Nick added: "This year's competition is dedicated to the memory of our long-standing judge Steve Watkins, who sadly passed away last year.

We know he was passionate about helping young people get into photography and that's why we wanted to add a youth category this year."

Rachael Talibart said: "I'm looking forward to judging the competition again this year. I love the South Downs National Park – it's where I grew up and where I do most of my work now. I can't wait to see all the wonderful photos celebrating this very special place that means so much to me."

Those wishing to go out and take photographs should visit the National Park's website page at www.southdowns.gov.uk/national-park-authority/our-work/coronavirus-covid-19-update/ for advice on how to stay safe. Please be aware that the Government guidance is being regularly reviewed and our advice may change.

Entries close on Friday 23 October. Find out more and download the entry form at www.southdowns.gov.uk/enter-the-south-downs-photo-competition/

"Into the Mistic" by Andrew Gambling – winner of the South Downs National Park Photo Competition 2019.



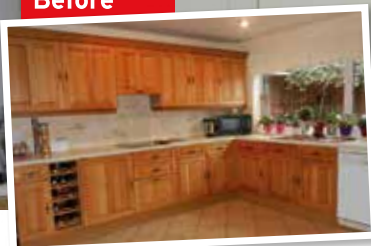
QUALITY KITCHEN MAKEOVERS

by simply replacing the doors and worktops

From the UK's #1
kitchen makeover experts.
Visit our showroom now



Before



- FROM SIMPLE DOOR REPLACEMENTS TO COMPLETE FITTED KITCHENS
- FULLY INSTALLED BY LOCAL PROFESSIONALS IN JUST A FEW DAYS
- CHOOSE FROM A LARGE SELECTION OF DOORS, WORKTOPS AND APPLIANCES
- 84 SHOWROOMS NATIONWIDE

Est. 1999

DO YOU DREAM OF A NEW KITCHEN?



9.7/10

Proud members of

checkatrade.com
Where reputation matters

See what our customers have to say

DREAM DOORS®

NEW LIFE FOR OLD KITCHENS

www.dreamdoors.co.uk

CALL US NOW FOR A FREE ESTIMATE:

01273 415141

VISIT OUR SHOWROOM:

50 Boundary Road,
Hove, BN3 4EF