

Edition 7 • Quarterly



May 2019

# DITCHLING

## PARISH COUNCIL MAGAZINE



NEWS AND EVENTS FROM YOUR PARISH COUNCIL



# Lancing College

Preparatory Schools, Senior School & Sixth Form

# Open Mornings

**Saturday 4 May**  
**10.30am–1pm**

**Lancing College**  
Lancing  
West Sussex BN15 0RW

**T** 01273 465 805  
**E** [admissions@lancing.org.uk](mailto:admissions@lancing.org.uk)

**Saturday 11 May**  
**10am–12 noon**

**Lancing Prep Hove**  
The Droveway, Hove  
East Sussex BN3 6LU

**T** 01273 503 452  
**E** [LPHadmissions@lancing.org.uk](mailto:LPHadmissions@lancing.org.uk)

**Saturday 18 May**  
**10am–12 noon**

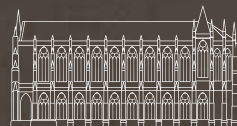
**Lancing Prep Worthing**  
Broadwater Road, Worthing  
West Sussex BN14 8HU

**T** 01903 201 123  
**E** [LPWadmissions@lancing.org.uk](mailto:LPWadmissions@lancing.org.uk)

**FIND OUT MORE**  
**LANCINGCOLLEGE.CO.UK**

Registered Charities  
Lancing College & Lancing Prep Hove 1076483. Lancing Prep Worthing 1155150

**YOUR  
INCREDIBLE  
JOURNEY**



## CONTENTS

Chairman article	4
Clerks corner	8
Newcomers party	10
Grants	10
2019 meetings	12
History project	14
Ditchling Common Charity	16
Defibrillators	18
Police visit	20
MP	22
Annual Parish meeting	24
Recreation ground developments	25
Scouts	27
Ditchling Film Society	27
District article	28
St Catherine's hospice	30
School	33
Horticultural show	34
Defibrillator Training sessions	36
Litter picking	36
Election Result	37
D Players	38

Cover photo credit: Gordon Bain  
This magazine has been produced at no cost to the Parish Council.

## Do you need a local, reliable electrician?

### BELGRAVE ELECTRICAL SERVICES LIMITED



- Extra Points/Sockets
- Interior & Exterior Lighting

- Garden Lighting
- New Installations
- Rewires
- Fuse Board Upgrades
- Testing and Inspection
- Fully Insured
- Free Quotations
- Reliable Service
- Competitively priced

I assure you of a quick response and a competitively priced service

PART  
Electrical Safety

ELECSA  
Part of the ECA Group

Call Keith on 07973 631 244 / 01444 471921

Visit: [www.belgraveelectrical.co.uk](http://www.belgraveelectrical.co.uk)



## The Nutmeg Tree

Recently refurbished Tearoom set in  
the heart of Ditchling



Morning Coffee • All Day Breakfast • Lunches  
Afternoon Tea & Cake • Dogs Welcome  
Courtyard Garden • Cycle Park • Licenced

# 01273 842708

6 West Street, Ditchling, BN6 8TS

For regular updates and full menu, visit:



[thenutmegreeditchling](https://www.facebook.com/thenutmegreeditchling)



[@thenutmegtree](https://www.instagram.com/thenutmegtree)

## PLEASE SUPPORT LOCAL BUSINESSES

A big thank you goes out to all the local businesses that have advertised  
and supported the Ditchling Parish Council Magazine

To advertise please call 01843 269513



Supporting the  
**REBUILD OF BRITAIN**



Published by Community Ad Web Ltd 01843 834160

email [info@communityad.co.uk](mailto:info@communityad.co.uk) web [www.communityad.co.uk](http://www.communityad.co.uk)

The views expressed in any published content are solely those of the contributors. The Publishers accept no responsibility for the accuracy of any information contained in the publication. The contents of this magazine including images may not be copied, reproduced, distributed, downloaded or displayed in any form or by any means without the prior written permission of Community Ad Web Ltd. Unless otherwise specified, the authors of the literary and artistic works in the pages in this magazine have asserted their moral right pursuant to Section 77 of the Copyright Designs and Patents Act 1988 to be identified as the author of those works. The Publishers reserve the right not to publish a submission or part of a submission that they consider defamatory or otherwise inappropriate for publication.



# HELLO AGAIN AND WELCOME

## to our May edition of the Ditchling magazine.



**My name is Don McBeth, and as I am writing this article, I am Chairman of the Parish Council. The Council will be electing a Chairman on the 20th May at the annual council meeting following the Town and Parish Elections which are being held on the 2nd May 2019.**

meeting are available on the parish website [www.ditchlingpc.org.uk/](http://www.ditchlingpc.org.uk/) All residents are welcome to attend.

**I think the progress in the Parish during 2018/19 can be classified as follows.**

**1** The Beacon Villages Neighbourhood plan. Has now been in force for over a year. According to the government, Neighbourhood plans are still a



We hope that you find something of interest in the following pages and may even be motivated to submit an article of your own for the next edition in August. In this edition I would like to review the progress we have made as a council over the last 12 months. I would normally present this at our Annual Parish meeting, but we thought that like last year it would be appropriate to include it in the magazine. It is a statutory requirement of the Parish Council, for the Chairman to report to the community on what has been achieved in the preceding year and to be available at a meeting of the community once a year, to answer questions from the public. The 2019 Annual Parish meeting will be held on May 10th, and the minutes of the 2018 annual parish

major guide when dealing with planning issues, but there now appears to be a two-year period when they may need to be reviewed. Fortunately, they are still the strongest tool we have to help fend off speculative development, both within and outside the National Park.

**2** The council has set an annual precept this year of £85,978. This is the amount of money that we have budgeted to run all of the projects and services within the parish, and this includes part funding of the car new park in Keymer road. We obtained planning permissions from the South Downs National Park for a 40-space car park to go ahead, and have in March 2019, completed the final legal matters to purchase the land, and

## AERIALBEAM

A Name You Can Trust

TEL: 01444 24 23 24

### Services Include

- TV's on wall
- Freesat/Freeview HD and recordable systems
- Upgrade dish systems and extra cable runs
- Freeview, FM, DAB Aerials and extra points
- Wifi solutions, Network cabling



[www.aerialbeam.co.uk](http://www.aerialbeam.co.uk)

Let's go swimming!

Angela's  
Swim School  
SWIM TO WIN AT LIFE

Life-changing, Life-enhancing  
Swimming Lessons for ALL ages



[eastsussex@anglasswimschool.co.uk](mailto:eastsussex@anglasswimschool.co.uk) • 07985 514000



Woodstock Construction

Family run business with over  
30 years' experience



### Some of the works we carry out include:

- Extensions
- Loft Conversions
- Painting & Decorating
- Kitchens
- Bathrooms
- Bespoke Joinery
- Flat Roofing - all types
- Pitched Slate Roofing
- General Building



Providing a personable,  
friendly service  
Contact us today:

FREE Estimates with  
No Obligation

t: 01273 891572 m: 07961 123054

[email: office@woodstockconstruction.co.uk](mailto:email:office@woodstockconstruction.co.uk)



COASTAL  
HOMECARE

We care, because you care

Coastal Homecare offer  
a range of home care services  
to meet everyone's individual needs;  
Personal Care, Home Care  
and Social Care

Tel: 01444 645 030

## RECRUITING NOW!

Full & Part-Time  
CARE STAFF  
REQUIRED in  
DITCHLING,  
WIVELSFIELD GREEN  
and CHAILEY  
to provide quality  
care and  
support to  
our  
customers  
living in  
their own  
homes.



are now in the process of arranging the ground works required to complete the work. Once the car park is completed, we have been advised that parking in Lodge Hill Lane would need to be addressed, to combat the inconsiderate parking that often takes place, and have applied to East Sussex County Council for parking restrictions to be considered.

**3** As usual our complement of councilors always needs updating. You will know that we have recently completed our local elections. Parish councilors serve for four years. Whilst this process is being conducted a period of “purdah” has to be observed, whereby official documents and notifications cannot be seen to bias one candidate over another. However now that this process is over, may I say that we are always looking for new blood and new ideas from any eligible member of the public who would like to join us on the council.

**4** Superfast Broadband is still an issue, especially with those residents living in the more remote areas of the parish. We are advised by BT that this should be resolved in 2020 at the latest. We must wait and see!

**5** As announced previously we have tentatively allocated £50,000 for the improvement of facilities in the children’s play area at the recreation ground for which we hope to obtain partial funding from other bodies. This as you may know was rolled out via our public consultation, which took place in January 2019. We hope soon to begin the process of updates and improvements, relying on comments and suggestion made by you the members of the public. It has been agreed that Barcombe Landscapes be retained as the main grounds contractor for maintaining the recreation ground.

**6** Burial ground extension. We have almost reached the limit of our burial ground. So as many of you may have noticed the scrub land to the east of the existing burial ground has now been cleared in preparation.

**7** Last year we welcomed Derek Blackhall as our assistant parish clerk and he has largely been responsible for the production of this magazine, for which we thank him for an excellent job. The magazine has so far had very

positive feedback from parish residents, and if you have anything that you would like to add or see added, and would like to contribute, please contact us.

Michelle Warner our existing clerk resigned in last autumn but stayed on until January 2019. I would like to thank Michelle for all her hard work and devotion to the parish in the three years she was here. In her place we have now appointed Sarah Mamoany, who is a self-motivated and experienced clerk from Ardingly parish. Again, I am please to say that she has hit the floor running and in proving to be a worthy asset to the efficient running of the parish.

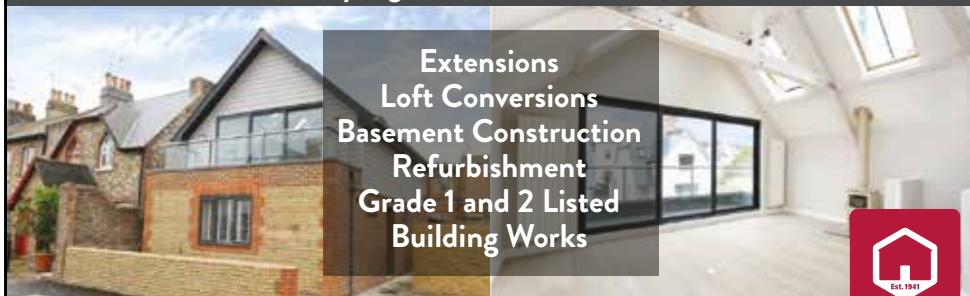
**8** We now have the Beacon Parishes Traffic Consultancy group, which is coordinated by both Ditchling and Westmeston parishes, to review traffic problems, and also to monitor the traffic using Spatham Lane. As always, the council has been in discussion with East Sussex County Council regarding traffic problems throughout the parish. These are conducted via a process called SLR or Strengthening Local Relations. It is a difficult process, not made easier by government cutbacks to funding for all county councils. We will continue the discussion, but are not hopeful of any immediate changes being implemented.

**Don McBeth,**  
Chair Ditchling Parish Council





Delivering a **first class finish** to every project with the  
very highest **attention to detail**



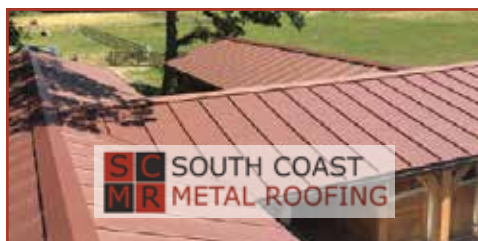
Extensions  
Loft Conversions  
Basement Construction  
Refurbishment  
Grade 1 and 2 Listed  
Building Works



**Respectful, polite, highly professional,  
efficient and always meeting deadlines.**

**GET IN TOUCH TODAY** for a **FREE** no obligation estimate

Office: **07885 325 954** [info@braidenconstruction.co.uk](mailto:info@braidenconstruction.co.uk) [www.braidenconstruction.co.uk](http://www.braidenconstruction.co.uk)



We are specialists in roofing and cladding. Working with a range of metals, we offer a bespoke service for both traditional and contemporary dwellings.

Metal roofs are durable, low maintenance and eco-friendly.

View our website to see our range of services or contact us to find out more.



Free Consultation & Quote  
Premium Quality Materials • Full Range of Specialist Services

**01273 563 553**  
[info@southcoastmetalroofing.com](mailto:info@southcoastmetalroofing.com)  
[www.southcoastmetalroofing.com](http://www.southcoastmetalroofing.com)

FOR ALL YOUR  
GLASS REQUIREMENTS

## HAYWARDS HEATH GLASS & GLAZING

Open Weekdays 8am. – 5pm.  
Saturdays 8am. – 12.30pm.

**McDOUGAL ROSE YARD**  
**22, GOWER ROAD**  
(GOOD PARKING FACILITIES)

**Tel: 01444 440119**

Fax: 01444 440092

E-mail: [info@sussexglassandglazing.co.uk](mailto:info@sussexglassandglazing.co.uk)



## CLERKS CORNER



**Following my appointment as Clerk and Responsible Finance Officer at Ditchling Parish Council I have had an interesting and busy first few months familiarising myself with new systems and areas I have not dealt with before as a Clerk, such as the burial ground, attending some training courses provided by the Sussex & Surrey Association of Local Councils and of course meeting lots of new people.**

Myself, the Chairman and Deputy Clerk were fortunate to visit the headquarters of Sussex Police in February with a guided tour of the Contact Centre which was such an interesting and eye-opening morning; the enthusiasm and work of the staff we met was lovely to see and the wide range of enquiries that they are dealing with on a day to day basis is quite incredible. We had the opportunity to see all areas of the centre and speak to many different staff about their roles, from CCTV operators, switchboard staff and 999 call operators, even having the opportunity to listen into the 999 calls that were coming into the call centre. Sussex Police are holding two public open days on the 7th July and 6th October and if you get the opportunity, do go along and see for yourself the work that goes on behind the scenes at Sussex Police; I am sure it will make you appreciate the hard work and dedication of the staff should you ever need to use their services. Details of how to book on these open days will be available on their website in due course.

I now find myself already upon the end of the Council financial year, with which comes some statutory duties for the Parish Council, which I thought I would explain below to give residents some idea of the open and transparency a Parish Council has to comply with. Some of these duties include the following, which all Parish councils in England must carry out:

- **Prepare an Annual Governance and Accountability Return (AGAR) in accordance with 'proper practices' as set**

**out in Governance and Accountability for Smaller Authorities in England**

- **Sections 1 and 2 of the AGAR must be approved and signed at a full Council meeting**
- **The Council must publish the approved, signed but unaudited AGAR on a freely accessible website**
- **Advertise on a website the rights to inspect and object to the accounts, the 'inspection period' cannot commence until the unaudited AGAR has been published and must then be for a period of 30 consecutive working days**

The Council will arrange an internal audit inspection prior to signing the AGAR at the Parish Council meeting and will then submit the completed documentation to the external auditor. The internal auditor's role is to inspect the systems the Council has in place and review the accounting records and all other relevant records and related information, which includes minutes of meetings and provide a report to the Council. A further interim internal audit also takes place in November with a full report being provided to the Council on the auditor's findings.

**To advertise please call  
01843 269513**





## Landscape Gardeners

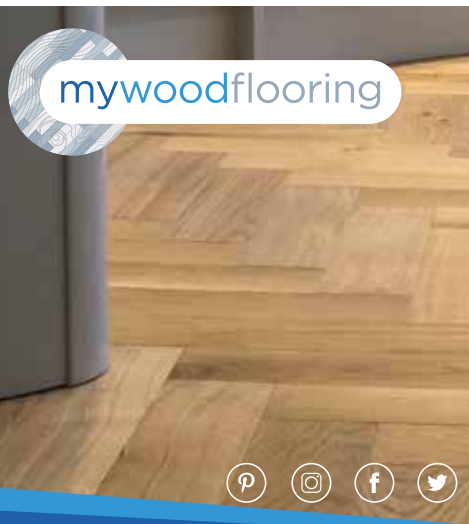
- Garden design & waterscapes
- Paving & driveways
- Decking & fencing
- Pond maintenance
- Planting & tree work



For friendly advice and a free quote, please contact:

**01273 843283**

**www.standens.net**  
**info@standens.net**



**www.mywoodflooring.co.uk**

sales@mywoodflooring.co.uk

**07788 582 782**

**45 Hassocks Road, Hurstpierpoint BN6 9QL**

**Checkatrade.com**



### Fresh Seasonal Fruit & Veg

with a local twist!

The new name in Brighton & Hove for fruit and veg boxes delivered direct to your door!

**Special Introductory offer**  
Receive a bar of Luxury Sussex Chocolate on your first order!

**a share of the CROP**  
from farm to table

order online [www.ashareofthecrop.co.uk](http://www.ashareofthecrop.co.uk) or by phone 01273 358468



### Headmasters THE BARBERS

- Complimentary drinks & newspapers
- No need to book
- Free parking
- Friendly, professional & welcoming

10 Cyprus Rd, Burgess Hill RH15 8DX

**01444 232360**

[www.headmastersthebarbers.co.uk](http://www.headmastersthebarbers.co.uk)

## NEWCOMERS PARTY



Pictures: Neil Losson

Ditchling welcomed new residents and representatives of local clubs and societies at its **Annual Newcomers' Party** on Saturday, 16 March. Organised by the Ditchling Village Association (DVA) it is an event to bring together people who have moved into the area recently to meet each other and also to showcase local groups.

The DVA was formed in 1947 to represent and support local residents and their clubs and organisations. It organises the biannual Ditchling Fair as well as monthly free coffee and cake events (third Tuesday of each month at the village hall) and supporting the Three Villages sports day. It also makes small grants to support local projects.

The party was complemented by the publication of the **DVA Ditchling Handbook 2019** listing all the local organisations and how to get involved along with useful reference

information. Copies are available to pick up from various outlets in Ditchling.

Twenty-eight different organisations were represented and around 40 newcomers met each other over food and wine. The party is organised each year and is open to anyone who has moved into Ditchling or St George's Park or guests from Streat or Westmeston in the last couple of years and has not attended a party previously. Next year's event is on **Saturday 14 March 2020** and new residents can already book their place, by registering online at [www.bit.ly/dva2020](http://www.bit.ly/dva2020). Later this year the DVA will be organising a Societies Fair - on **Saturday 21 September**. This new event will be open to everyone to drop in and find out more about our local clubs and groups. It will be a perfect time to take up a new hobby, sport or interest and we look forward to seeing you there. More information will be published closer to the event on [Ditchling.com](http://Ditchling.com) or follow the DVA on Facebook.

## PARISH COUNCIL GRANTS AWARDED – 2018/19

**Ditchling Village Association  
Ditchling Horticultural Society**

– **£500 towards the Dame Vera Lynn tree planting**  
– **£2,000 towards the costs of providing mains water on the allotment site.**

**Ditchling Village Hall  
Other grants made:**

**£287.50  
£287.50**

– **£2,544 towards new doors and windows**

– **The Budding Foundation**  
– **Dame Vera Lynn Children's Charity**

The Parish Council has £5,000 in the 2019/20 grant budget and applications are welcome from organisations in November 2019.

Grants are to be used for a specific purpose in the furtherance of wellbeing of the community, either generally, or for a specific purpose and which is not directly controlled or administered by Ditchling Parish Council.

The Council will consider applications at the December 2019 meeting, where the applicant and members of the public will be able to speak on their application.

The grant policy is available to view on the Ditchling Parish Council website and application forms can be requested from the Parish Clerk at [parishoffice@ditchling-pc.gov.uk](mailto:parishoffice@ditchling-pc.gov.uk) or **01273 844733**.



**PROMEDICA24**  
Live-in companionship & care

**24/7 live-in care & companionship in the comfort of your own home**

Our round the clock live-in companionship & care packages start from £695 per week

Please call Lesley on 01273 257 465 or 07388 326 686 or visit [www.promedica24.co.uk/brighton](http://www.promedica24.co.uk/brighton)








**RWMOTOR ENGINEERING**

Your local friendly family run garage with over 40 years experience in all aspects of vehicle repairs, old, new, classic, sports & prestige.

**All Makes & Models • M.O.T's & Servicing • Repairs**  
**Diagnostic Specialists • Wheel Alignment**  
**Tyres & Exhausts • Clutches • Cambelts • ECU Remapping**  
**Air Conditioning • Brakes • Brake Disc Skimming**  
**Welding & Fabrication • Engine Tune-ups**  
**Petrol Injector Testing & Servicing • Diesel Specialists**  
**Carbon Cleaning • Courtesy Cars Available**



[www.rwmotorengineeringltd.co.uk](http://www.rwmotorengineeringltd.co.uk)

Unit 1, The Old Brickworks,  
Station Road, Plumpton Green  
East Sussex BN7 3DF

Tel: 01273 891393  
Email: [rwengineering@live.co.uk](mailto:rwengineering@live.co.uk)




**Broadbridges Menswear**  
Established in 1934



Menswear  
Formal & Casuals  
Morning & Evening Hire

**01444 413466**

**[www.broadbridges.co.uk](http://www.broadbridges.co.uk)**  
2 Sussex Road, Haywards Heath, West Sussex

**S. LEWIS**  
**PROPERTY SERVICES LTD**

All Aspects of Security Work Undertaken  
Commercial & Domestic  
Carpentry • Building • Plumbing • Electrical  
Woodworm & Dry Rot

**Steve: 07885 763 409 Paul: 07738 569 911**  
**Tel: 01444 236 510**





**[steve@lewispropertyservices.co.uk](mailto:steve@lewispropertyservices.co.uk)**



**J4CAMPERS**

Hire for a great camping experience  
Try before buying or converting  
Have your dream camper built for you

Web: [www.j4campers.co.uk](http://www.j4campers.co.uk)  
T: 01273 921159 M: 07933 655798  
E: [j4campers@gmail.com](mailto:j4campers@gmail.com)  
Unit 10A&B Firland Park Estate,  
Henfield Road, Albourne, BN6 9JJ

**Seymour LOCKSMITHS**  
Local Independent Locksmith

• 24/7 Emergency Call Out  
• Gaining Entry  
• Insurance Approved Locks Upgrades & Replaced  
• Window Lock Replacement and Upgrades  
• uPVC Doors & Windows






**01273 465 336**  
**07710 408 414**

# DITCHLING PARISH COUNCIL

## Meetings 2019/20

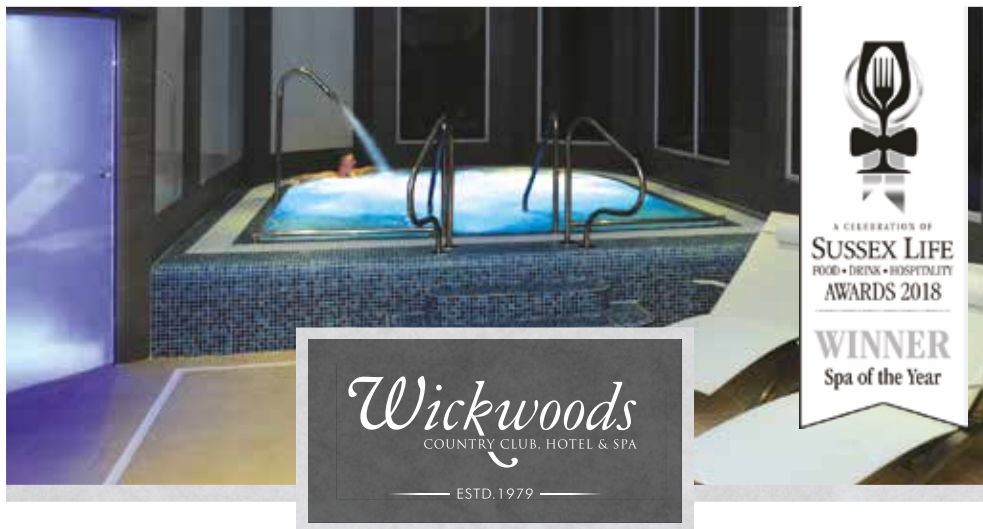
The schedule of Ditchling Parish Council meetings can be found below. At all Council meetings the chairman is in charge of the meeting, and the clerk or deputy clerk supports the council as it discusses business. A period of 15 minutes is set aside at the start of the meeting for the public to ask questions or make comments on items on the agenda. Comments on items not appearing on the agenda can be made at the chairman's discretion. Once the meeting has opened there can be no further public participation. The Council meetings have a clear purpose - to make decisions. Furthermore, they are public events; the

meetings must be advertised and the press and public have a right to observe, record and report on how the council operates. The same approach should be adopted for sub-committees. Exceptions are when sensitive issues are discussed (such as legal, contractual or staffing matters) and then the council can agree to exclude the press and public for just that item of business. Council meetings are meetings of the full council and all councillors are expected to attend. Committee meetings bring together a smaller number of councillors to concentrate on a specific function of the council and share the workload.

DATE	TYPE OF MEETING
10th May 2019	Annual Parish Meeting
20th May 2019	Annual Council Meeting
3rd June 2019	Special if required
24th June 2019	Statutory Council Meeting
8th July 2019	Special if required
22nd July 2019	Statutory Council Meeting
5th August 2019	Special if required
19th August 2019	Statutory Council Meeting
9th September 2019	Special if required
30th September 2019	Statutory Council Meeting
14th October 2019	Special if required
14th October 2019	Finance Committee
28th October 2019	Statutory Council Meeting
11th November 2019	Special if required
25th November 2019	Statutory Council Meeting
16th December 2019	Statutory Council Meeting
6th January 2020	Special if required
27th January 2020	Statutory Council Meeting
10th February 2020	Special if required
24th February 2020	Statutory Council Meeting
9th March 2020	Special if required
30th March 2020	Statutory Council Meeting
6th April 2020	Special if required
27th April 2020	Statutory Council Meeting

Each year an Annual Parish Meeting is held which is not a council meeting – it is a meeting of the people or electors and usually takes the form of a review of the year and a question and answer session, this year it will be held on the 10th May. The Annual Council meeting takes place on the 20th May where the Chairman is elected for the year.





## IMPROVE YOUR LIFESTYLE

Achieve an improved lifestyle with an affordable & unrivalled Club Membership  
The spa, hotel stays & dining at The Glass House Restaurant is available to non-members

Limited  
Availability

Join as a Club Member and receive:

- Unlimited facility use
- Free gym induction & programme
- Free tennis coaching session
- Guest passes
- Includes 106 exercise classes a week
- Discounts in the bar & restaurant
- Kick-starter kit
- Regular reviews & follow-ups
- Discounts on spa treatments

See [Wickwoods.co.uk](http://Wickwoods.co.uk) or call 01273 857567

Member Irving S. "Excellent gym and health club with top facilities and friendly helpful staff" ★★★★★  
Sue B. "The food is superb, the gardens and setting stunning, wonderful massage and facial included!" ★★★★★

GYM CLASSES SAUNA & STEAM INDOOR TENNIS SWIMMING SPA & TREATMENTS DINING & EVENTS & MORE

T&C's Apply. Offer subject to availability, management reserves the right to withdraw or amend the offer at any time. Other T&C's apply, please contact Wickwoods.



01273 857567 *W* [Wickwoods.co.uk](http://Wickwoods.co.uk)

Wickwoods, Shaves Wood Lane, Albourne, West Sussex BN6 9DY



### Ditchling History Project

is your local history society. We research all aspects of the parish's history: its families; its buildings; its industries; its arts & crafts; its church & chapels; its clubs and societies. We maintain an

extensive and growing database which we aim to make available online. We are 'project' based because we never cease investigating the history of this amazing parish. Historical records, tythe maps, census returns, trade directories, house deeds and word of mouth are some of our many sources. We are always ready to learn from those who know something of Ditchling's history both past and recent. We welcome anyone who would like to join us. Our website is [www.ditchlinghistoryproject.org](http://www.ditchlinghistoryproject.org)



### Project News

Our 'Street by Street' Trail and church exhibition commemorating the centenary of the ending of WW1 excited so much interest we have now produced a book 'World War 1 Street by Street: the impact of the Great War on Ditchling'. This 161-page publication costs £12.50. To be sure of your copy email:

[history.project@btinternet.com](mailto:history.project@btinternet.com)

### Do you know?

#### Then

Having fluctuated throughout the 19th century the parish population at the start of the 20th century was not markedly smaller, allowing for boundary changes, from today's. This was because the principal local occupations of



farming, quarrying and brick making were then very labour intensive. However, whereas for example the 2011 census records over 850 household entries the number a century ago was very significantly smaller. Many families shared dwellings particularly large houses such as Wings Place which had three or more families living in them.

Following WW1, a Housing Act was introduced in 1919 following a speech by Lloyd George in which he said the country should build "homes fit for heroes". The Act provided money for local councils to build what in effect were the first 'Council Houses'.

In Ditchling that remarkable man Fred Wood, the builder, naturalist, author and smithy, operating out of his then yard in North End (see photograph) built the first two bungalows under the scheme in East Gardens.

Over the next 35 years there was an unprecedented building boom in Ditchling. The

photograph of a house set in open fields is, now, No 22 Beacon Rd before the building of the Nevill Cottages and Long Park Corner estates south of it. At the eastern and northern ends of the village the



Shirleys and South View estates were added respectively. These were both private and public developments. Many of the properties fulfilled the criteria of being the homes fit for heroes envisaged in the Act.

The effect of all this development was to expand enormously the profile of the village settlement, whilst at the same time much of the land on the connecting roads, such as North End and Common Lane, was filled in with ribbon development.

## Now

Building development since then has, by contrast, been severely constrained by the planning regulations and conservation areas introduced in the 50s & 60s. It has mostly been confined

to in-filling and replacement of redundant buildings within the 'settlement boundary' established after the previous developments (see plan). Charlton Gardens, Dumbrells Court, Emmet's Gardens, Brangwyn's Acre and recently The Walled Garden fall in this category and have not impacted to anything like the same extent on the profile of the village settlement. Within the parish but well outside the village settlement St George's Park is the exception to that rule.

## sunglasses

@ Hassocks Eyecare Centre



Over 300 frames from the leading brands

Non prescription, fashion and sports

Professional advice and fitting for no extra charge









**HASSOCKS EYECARE CENTRE**

[www.hassockseyecare.co.uk](http://www.hassockseyecare.co.uk)

17 KEYMER ROAD, HASSOCKS, BN6 8AD

**01273 843946**

 @HASSOCKSEYECARE



## John Wadham

### Electrical Services

Mob: 07973 803687

# PAY LESS TAX

Formerly with the world's largest accountancy firm for many years, I am now available freelance to deal with all tax and accountancy matters, at a fraction of company rates.

Contact Lawrence Flowers for a free consultation at your address

**01273 891505    lawrie8f@aol.com**

## Ditchling Beacon and Commons a new charity for Ditchling

**Ditchling is fortunate in that it still retains not one but three areas of common land. The best known is the common at the northern end of the parish which is called simply Ditchling Common.**

Adjoining it, between the railway and Folders Lane, is a small wooded hill named Spoil Bank which was designated as common land as recently as 2008. The final common, Tenantry Down, is a large area on the northern slope of the Beacon. Because of their rich biodiversity, parts of both Ditchling Common and Tenantry Down are designated as Sites of Special Scientific Interest (SSSIs). 2018 was an important year in the very long history of our commons with ownership of all three commons passing to a newly formed charity, Ditchling Beacon and Commons, whose purpose is "to promote the conservation, protection and improvement of the physical and natural environment of the Ditchling Commons".

These commons have a long history with written records going back to the reign of Elizabeth I. Grazing rights are mentioned in the 'Book of John Rowe', steward to the Marquis of Abergavenny (the owner of the Manor of Ditchling) from 1597 to 1622. Ownership of the commons remained with the Abergavenny family until 1950 when the then Marquis sold the freehold for the nominal sum of £100 to a limited company, Ditchling Common & Tenantry Down Ltd set up as a holding company whose shareholders consisted of all those owning rights on the commons. Their successors are the commoners of today who have set up the new charity and gifted the land and assets of the company to the new charity.

Past Chairman, Peter Cribb has left a wonderful record of what life was like for a child living on the Common in the 1920s. "For several years there was a point-to-point meeting on the Common in the autumn. The starting and finishing points were on the level of Bull's Brow where spectators and book-makers gathered.



There were marquees to accommodate the large number of visitors for refreshments and the

aces were held across the top of the Common to Pope's Farm to return via Hallett's fields. I can recall the excitement of the horses galloping to the finish with mud flying from their hooves and the crowd shouting encouragement."

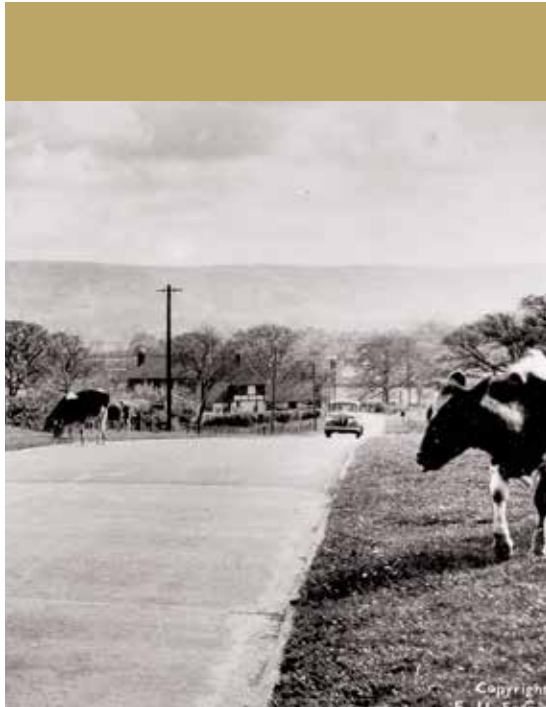
Some will still remember the gates at each of the four ends of the northern common which prevented the commoners' cattle from straying further afield. Long after they ceased to be used and the common was fenced, the posts remained

and were a reminder of generations of children (myself included) who used to swing on them and demand a penny from motorists to open and shut them.

The world that is described here has long gone. The first big change came in 1974 when the land north of the big roundabout was bought by East Sussex County Council under a compulsory purchase order to create a Country Park. Since then, changing agricultural practice







and population growth have continued to face the commoners with new challenges. We were increasingly aware that the limited company set up in the 1950s to own the commons, was no longer fit for purpose. After much debate the commoners agreed that a charitable company would offer far greater protection for these precious open spaces and accordingly a new charity was formed, the assets transferred and the old company wound up. We hope that this new structure will ensure that Ditchling's three commons remain open spaces, protected from ever encroaching development and accessible for all to enjoy.

Each year one of our Trustees, the eminent botanist Dr Phil Cribb, leads walks on both areas. This year he will be leading the walk on the Common on 7th June and on the Beacon on 10th July. If you would like to join us please email me at [jenny@kilbride.plus.com](mailto:jenny@kilbride.plus.com) and I will send you further details of where to meet nearer the time.

**Jenny KilBride**

– Trustee, Ditchling Beacon and Common



**AMS**  
PROPERTY  
SERVICES

**PRO**  
PLASTICS

**ALL YOUR PROPERTY NEEDS**

Fascias • Windows • Doors  
Gutter Clearance • CCTV Gutter Maintenance

**07702 854373 01273 400162**  
**[www.ams-property-services.com](http://www.ams-property-services.com)**



SUSSEX  
PROFESSIONAL  
SERVICES

Tel No. 01273 569120  
Mob. 07704 973357  
[info@sussexprofessionalservices.co.uk](mailto:info@sussexprofessionalservices.co.uk)

We are a friendly and local firm with over 20 years' experience, providing all the accounting and tax support your business needs.

**Offering competitive rates:**

- Personal tax returns
- Business accounts
- VAT returns
- Payroll

(including auto enrolment processing and CIS Returns)

**Other services include:**

- Bookkeeping
- Business start up and registration
- Accounts software installation
- Excel training and support.

**Contact us now for a free initial consultation.**

**Curves** 01444 416 721  
*Fitness for women*

**We're here to Empower Women!**



**FREE WEEK GYM PASS,**  
**WHEN THIS MAGAZINE IS PRESENTED**

**30 Minute full body workout designed for women**



71A South Road, Haywards Heath, RH16 4LQ

**@curves.heath**

**Curves**  
[curves.eu/uk](http://curves.eu/uk)



## Life saving public use defibrillators in Ditchling village

**The community response to cardiac arrest is critical to saving lives. Each year UK ambulance services respond to approximately 60,000 cases of suspected cardiac arrest. Strengthening the community response to cardiac arrest by training and empowering more bystanders to perform CPR and use automated external defibrillators (AEDs) at least doubles the chances of survival. Starting CPR and using an AED before an ambulance arrives can save lives**

In 2015 Burgess Hill District Lions and Ditchling Parish Council bought the first public access defibrillator which was located outside Ditchling Village Hall. Since that time, three other public access defibrillators have been installed in Ditchling: in the entrance to St Margaret's church, outside the pavilion at the recreation ground and outside Rafael Court at St George's Park.

Other public access defibrillators in this area can be found outside Adastra Hall in Hassocks, Hassocks railway station and outside the church and village hall at Westmeston.

A defibrillator can save a life when someone's heart has stopped. It is designed to be used without training by anyone and taken to any nearby location to treat a person who has collapsed, is unresponsive and is not breathing normally.



### Actions in an emergency:

If you find someone who has collapsed and is unresponsive with abnormal breathing, always call for help by dialling 999 for an ambulance and someone should start CPR immediately. If



you are unsure where the nearest public access defibrillator is located, the 999 operator will be able to tell you. The person's chest should be exposed, the pads applied and the defibrillator turned on. There will then be visual and verbal easy-to-follow instructions from the machine.

During 2015, after the installation of the village hall defibrillator, the parish council organised some CPR training sessions for local residents to give them the confidence to use

a defibrillator if required. Around 50 people attended a number of organised events. Please remember you do not have to be trained with a defibrillator to use one, they are designed for the general public and cannot cause any harm.

This year the parish council is organising some more training events run by Mid-Sussex Community First Responders. The dates for these events will be available on the parish council website ([www.ditchlingpc.org.uk](http://www.ditchlingpc.org.uk)). However, if you would like to express interest please leave your details at [www.bit.ly/ditchlingdefibrillator](http://www.bit.ly/ditchlingdefibrillator)

### Victoria Ingham

**Ditchling defibrillator locations, as shown in the photographs above:**

Outside the entrance to

**Ditchling village hall**

Outside the entrance to

**St Margaret's Church**

Outside the pavilion on

**Ditchling recreation ground**

Outside **Rafael Court, St George's Park**





## Police Visit

**On Tuesday the 19th of February, A visit was arranged to the Sussex police Headquarters in Lewes, to see in action the working of the Sussex Police Contact Centre. This is a purpose built facility for dealing with enquiries from the public who dial 999 or the non emergency 101 services. 101 is the number to use to contact the police in situations that do not need an immediate response. 999 is still the number to call when an immediate response is needed - when a crime is in progress, when someone suspected of a crime is nearby, when a life is in danger or when violence is being used or threatened.**

The police are working to ensure the public of Sussex know the best way to contact them. i.e.

**Is your call a police matter?**

**Could you make the enquiry online?**

On average Sussex Police receives over 70,000 contacts per month. This figure includes a vast range of topics from someone reporting suspicious behaviour, reporting a car accident, through to issues which should be reported to a more relevant organisation.

In 2016 there was a 12% increase in people using the Police website and on-line reporting mechanisms. In 2017 that increase more than doubled to just under 25%.

In March 2018 Sussex Police received over 1150 calls to 101 and over 580 emergency calls to 999 every day and the demand is increasing.

This would help explain the delays some people experience when trying to call 101. Delays which have been reported in the local press.

The police are seeking to ensure they help those through the promotion of the different channels available depending on need.

To help the police tackle crime effectively, the public is being reminded they should report online or call 101 to speak to the police or seek an alternative option, when there isn't a crime in progress or risk to life.





#### Advice for calling 999:

- a crime is in progress now
- someone suspected of a crime is nearby
- when there is danger to life
- when violence is being used or threatened

If there is not a need to speak to someone, you could use online reporting form on the police website. <https://sussex.police.uk/contact-us/>

You can also contact your local team by email or phone to report non-emergency police matters. This could be to report a crime or just to seek advice. These additional ways to contact police allow them to respond more quickly to emergencies, for when life is in immediate danger or a crime is happening right now.

The way the police respond to crime is based on threat risk and harm. They will always be there for those in most need, and want to ensure that the public know the best ways to contact them based on their need. Local policing includes Prevention Teams are working with partners to identify the best ways to solve problems. Contact with the public is vital. Active support of the communities the police serve is essential in delivering an effective and efficient service.

Emergency and non-emergency calls are taken and the appropriate police response is determined, using a “triaging” system, having identified threat harm and risk. All this is managed by highly trained staff working from the single contact and command centre.

## PCSO (police community support officers)

Katy Bourne the local Police and Crime commissioner recently gave out the following notice regarding PCSO's

“I would like to take this opportunity to hopefully remove some of the misconceptions around the role PCSOs can and do play in keeping our communities safe and introduce you to a couple of the new recruits from this year.



PCSOs work closely with officers and local communities across Sussex to gather intelligence which bolsters investigations and offer a welcome deterrent presence

in our towns and villages. They are trained to tackle a magnitude of issues and address the public's concerns head on. They very much take a proactive part in keeping our communities safe and we have already seen anti-social behaviour being successfully tackled in certain areas as a result.

PCSOs and PCs working together in prevention teams have been taking robust action against this crime type in Burgess Hill town centre. They have conducted high visibility patrols in the town centre and other hotspots, directly interacting with anyone committing ASB and removing them from the area. This high visibility is set to be maintained and similar deterrent methods will be adopted in towns and villages across Sussex following the recruitment of 100 more PCSOs starting in March of this year.”

# WASPI campaign update.

## Women Against State Pension Inequality



**The Waspi campaign is a campaign for women who have been adversely affected by changes to the state pension age for women. In 1995 Parliament set about equalising the pension age between men and women by increasing women's SPA (State Pension Age) to 65, the same as men. However, in 2011, before I became a MP the Coalition Government started to implement these changes faster than promised leaving many women with no time to make alternative plans.**

Since being elected, I have been supporting and fighting for those women affected by these changes to the state pension age. Over 3000 women in the constituency of Lewes have been affected and having met with many locally I have been working with fellow MPs in Parliament to try and secure a solution so that these women, who had little or no notice, of their pension age being changed could be compensated. Despite as a group of MPs bringing a bill to Parliament to force the Government to revisit this issue, we have so far not been successful.

However, the Parliamentary and Health Services Ombudsman (PHSO) who deals with complaints such as these, has contacted me to say it has selected six complaints about the state pension age that will act as lead cases to set a precedent for thousands of others. The six cases were selected for a preliminary enquiry, which the PHSO said would determine whether or not to investigate the claims further and which could potentially force the Government to intervene and support all women affected by the changes to their pension age.

These cases were brought to the Independent Case Examiner (ICE), the second stage in the Department for Work and Pensions' two-tier complaints process, by women unhappy about the recent increase to their state pension age who have then referred them on to the PHSO. The PHSO has used a broad generic scope

obtained from the six cases for the purpose of their investigation and if they find in favour could have positive implications for all affected.

In addition, there is also been a judicial review initiated in the High Court. This does put a halt to the PHSO investigation, until the judicial review is completed but it could also have a



benefit to all women affected if the outcome of the cases are upheld.

This is a positive step for the campaign. I look forward to seeing the outcome of this review and will I keep you updated.

I have written before about the poor availability of broadband and mobile phone signals in the constituency. As the world becomes more dependent on digital technology the lack of access to a signal is leaving communities behind. It is not just businesses in rural areas that will benefit from improved broadband, but also local residents.

Last week I, along with a number of MPs met with Ofcom to push for progress and to discuss local broadband and mobile coverage concerns as many rural areas in the constituency are still not getting anywhere near the level of broadband connectivity or mobile phone signal that they are entitled to. Indeed, when I travel across many rural parts of the constituency my mobile phone signal drops out completely in places like Alfriston, Ditchling or Wivelsfield.



There is hope however as to combat the hard to reach areas the Government is introducing the Universal Service Obligation (USO) for Broadband next year. This will give consumers and businesses the right to request a broadband connection capable of delivering download speeds of at least 10 Mbit/s and upload speeds of at least 1 Mbit/s. These speeds are sufficient to allow several people in the same house to browse the internet, make video calls or watch HD movies. Anyone not receiving the USO technical specification at an affordable price will be able to request a connection as long as it does not cost more than £3,400 to connect them and as long as there is not a scheduled alternative connection programmed for the next twelve months. It has been estimated by Ofcom that as of January 2018, 925,000 premises in the UK (3%) would qualify for the USO based on the proposed technical specifications. These are properties that are the hardest to reach areas in terms of broadband connectivity.

I am hopeful that following pressure from myself and other MPs representing rural areas that we can continue to influence the Government and Ofcom to carry out the plans already in place and go further where needed to increase rural broadband and mobile connectivity. It is important that everyone has the chance for good mobile and broadband connections and that we end the "hot spots" in the local area.

*With all good wishes*  
**Maria Caulfield**

To advertise please call  
**01843 269513**

### **Brighton Piano Warehouse** *The Lowest Prices in the South*

- New & Second-hand Pianos
- Grand & Upright Pianos
- Digital Pianos
- Covers, Stools & Accessories
- Pianos Wanted – Best Prices Paid
- Concert Hire
- Piano Removals



Free Local  
Delivery &  
First Tune

**01273 601 989**

**[www.brightonpianowarehouse.co.uk](http://www.brightonpianowarehouse.co.uk)**  
43-45 Bonchurch Road, Brighton, BN2 3PJ



**Ditchling Parish Council  
Annual Parish Meeting  
Friday, 10<sup>th</sup> May 2019 at  
7.30pm  
Ditchling Village Hall**

All residents are invited to attend the Annual Parish Meeting which provides residents the opportunity to ask questions to the Council.

Join us for refreshments

[parishoffice@ditchling-pc.gov.uk](mailto:parishoffice@ditchling-pc.gov.uk)

[www.ditchlingpc.org.uk](http://www.ditchlingpc.org.uk)

01273 844733



## YOUR VIEWS ON DITCHLING RECREATION GROUND AND PLAY AREA



**In January the Council held 2 consultation days at the Village Hall and The Pavilion where we displayed our proposals for improving the recreation ground in Ditchling.**

The feedback we received was very illuminating and we are extremely grateful to the 133 people and their families who took the time and trouble to attend and complete the questionnaires provided. We received a total of 306 comments on our recreation ground proposals and 504 votes on the proposed equipment for the children's play area - an average of over 2 comments per person and nearly 4 votes per person respectively for the 2 questionnaires. We have already posted these responses on the Council's website, together with the consultation plans. Please follow the link [www.ditchlingpc.org.uk](http://www.ditchlingpc.org.uk). The Council also received two letters from residents following the consultation days.

Before analysing your responses, it is worth repeating my comment from earlier articles that these proposals – like the Neighbourhood Plan – are looking some years ahead and the Council simply does not have the resources to deliver all of these in the short term.

In answer to the 17 Council proposals on the recreation ground, the highest number of responses, with 73 comments, regarded the extension and upgrading of the children's play area. The responses were generally positive and tended to confirm the earlier research we undertook during the Neighbourhood Plan consultation which I reported on in previous editions of the magazine. There were concerns over the scale and siting of the facilities expressed during the consultation. All responses are available to review on the Parish Council website.

The second highest response with 50 comments

was for “a new all-weather sports pitch”. As we indicated, this is likely to involve significant works and costs and there is clearly concern over any floodlighting. This facility will take longer to implement but the Council feels there is now sufficient support for this project to take to the stage of a feasibility and option study.

The third highest response with 39 comments regarded the creation of “new wildflower and grassland meadow areas” on the northern former rugby pitch. The Council is aiming to come forward with detailed plans later this year on this.

The fourth highest response with 33 comments regarded “upgrading and extending the Pavilion”. Again, this will take more time and money to achieve and there are concerns about adding another storey but we will be looking at the feasibility and options for achieving this in the future.

There were 27 comments - the fifth largest response - on “enhancing access to the children’s play area from the Farm Lane entrance”.

## THE PLAY AREA

There was strong support for the upgrading and expansion of the existing play area. We presented 43 items of play equipment at the consultation days and these appear on the Council’s website together with details of the voting. The following 10 items were given 20 or more votes:

Table tennis	(55 all options)
Climbing wall	(43)
Steel cableway or zip wire	(37)
Titan carousel	(32)
Kinderland ropeway	(29)
Ball court	(26)
Rock	(24)
Basket seat swing	(20)
Rope and dome frame	(20)
Eight frame	(20)

Full details of the consultation outcome can be found on our website at [www.ditchlingpc.org.uk](http://www.ditchlingpc.org.uk).

There will be a further update on this topic in our next magazine.

**Phil Smith**

See how we did it at.  
[www.bmgbespoke.co.uk/gems](http://www.bmgbespoke.co.uk/gems)

Thinking outside the box.



Bishops Cross • Extraordinary jewellers • Tel: 01444 871 369





## 1st Ditchling Scout Group

**We had a very busy Winter term which included two fundraisers. Our Christmas Card delivery service which proved even more popular on our second delivery weekend. We must thank David at the Post office for allowing us to have our special Post box on his counter. Also he now has a battery recycling box for you to deposit your old batteries in which is part of a Recycling project the Scouts are working on. You may have seen the posters around the village.**



Our second fundraiser was bag packing at Budgens which proved very popular with customers on the Saturday before Christmas.

Earlier this term Charlotte and Jane Hill came to talk to the Cubs about two childrens charities they help in Sierra Leone. "Street Child" and "Happy kids and Adolescents". The Scout Group has donated several teams worth of football kit which has now been sent to Sierra Leone for the children to enjoy and make good use of.

This term we have taken part in a couple of District Events. The Cubs and Scouts entered teams in the District swimming gala. EVERY young person made it into a Final which is a great achievement and those that took part



should feel very proud of themselves. A small team of Scouts took part in a District Check point Challenge Hike.

All the sections have had a very full, fun term including a visits to the Apple Store, trips to Ditchling Museum , Golf taster sessions, swimming , hikes and much badge work. The Scouts have also had an Air Rifle target shooting session and a trip to Radio Sussex and may even be heard on Drive Time with Sarah Gorrell.

### DITCHLING FILM SOCIETY

**A friendly gathering to view a wide variety of films representing the best in World Cinema, plus the occasional crowd pleaser! High definition digital projection and surround sound.**

Programme widely advertised locally. Annual membership £30 for all films. Guests welcome (£5 an evening) Tea and coffee included. Wine available for sale.

**Meets:** Ditchling Village Hall on the first Thursday, monthly 8pm

#### Next Films

Thursday 6th June **Let The Sunshine In**  
Thursday 4th July **The Big Sick**



# Lewes District Council Report

## Councillor Tom Jones

### Shared Services

This year has seen the fruition of the transformation programme between Lewes District and Eastbourne Councils which began over two years ago.

Commonly known as shared services between two local authorities whilst retaining their political independence both bodies were able to achieve year on year savings of £3.2 million. The scheme presented many challenges to staff and councillors from adopting a common IT and communications system to having one CEO and one team of Directors. Even now we realise there is still much to do, but in terms of saving money was it worth the struggle then most certainly it was. Learning from each other has brought many benefits which have now been recognised in Lewes District Council and Eastbourne Borough Council receiving the public sector Councils of the Year Award 2019 and a Gold Award for working together. This success demonstrates how politicians can overcome ideological differences in the interests of the common good.

### Affordable Homes

A £1.3m Lewes District Council project to create a new development of high-quality affordable family housing is taking shape in Peacehaven. The new accommodation in Ashington Gardens has been built off-site by a specialist modular building company in Newhaven and then installed on council-owned land.

The UK is suffering from an acute lack of affordable properties. There are people in the district, often families, in real need and these innovative new modular builds will provide the homes they long for, at a time when they need them most. Six new homes in Peacehaven and 16 more in Newhaven this year with more to follow across the District.

### Climate Change

The district Council has launched a campaign encouraging drivers to cut down on air pollution by turning off their engines while dropping off children at school.

Across the District, schools are being invited to sign up to the anti-idling campaign. Those that do will receive digital information packs to send out to parents and pupils, giving them the opportunity to find out more about air pollution and ways to help reduce it. The scheme is part of the Councils on going work to raise air quality awareness in partnership with East Sussex

County Council, Sussex-air and Public Health England. In addition the Conservative administration have ensured fibre optic internet connections and electric car charging points are installed in all new homes this measure would give greater opportunity for residents to work from home saving on car travelling times resulting in fewer cars on our roads. In addition the Council will examine the possibility of offering free parking on the Council's land so drivers commuting along the A259 can leave their vehicles in favour of buses. The Council will continue to encourage the reduction of the use of plastics in the Councils buildings and promote plastic reduction at events throughout the area.



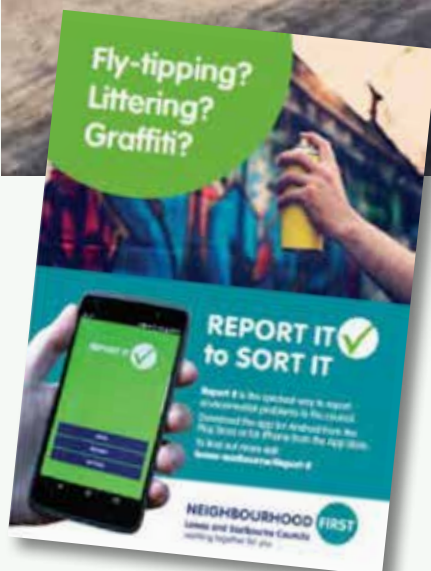
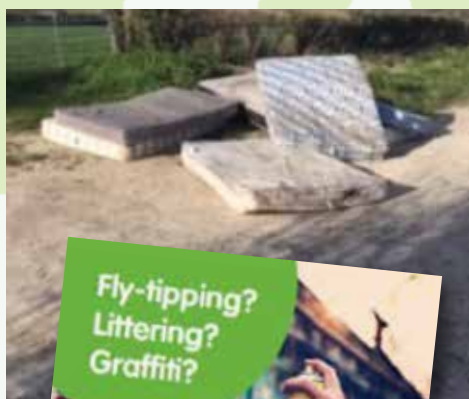


## Re-cycling

Lewis District Council introduced 'blue lid' recycling bins, alongside green foodwaste bins which has doubled our recycling rates in the area. The Council introduced co-mingling recycling which has resulted in vastly improved recycling rates. Lewes District Council is now in the top five percent of the most improved councils for recycling in the entire country. Since introducing the new recycling system we have been able to get rid of the electric, so called, Milk Float, style of recycling vehicles which were introduced by a previous controlling administration.

## Fly Tipping

Lewis District Council has recently been awarded the power to issue a fixed penalty notice of £400 to a resident if their waste is found to be fly tipped. This follows government consultation last year that identified some lack of awareness and care by people who use private contractors to dispose of their rubbish. The Council is reminding people that they should take all reasonable measures to ensure that their waste is given to someone who is authorised to remove it. Local authorities and private waste contractors must hold a waste carriers licence. Allowing an unauthorised person to dispose of waste could lead to it being fly tipped. If you give waste to somebody else and it is found fly tipped you must be able to provide evidence to the police of who you gave it to. If you cannot provide this information, you can run the risk of a fixed penalty or on conviction through the courts, a criminal record.



# St Catherine's Hospice Launches Two Charity Treks!

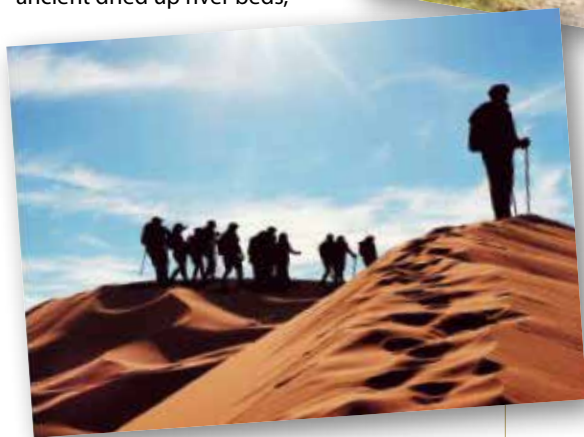
**St Catherine's Hospice is thrilled to launch two brand new treks this year!**

If you are an adventure lover who enjoys breathtaking landscapes, then St Catherine's Hospice 5 Peaks Challenge is for you! Running from Friday 21 June to Sunday 23 June 2019, trekkers will tackle five of the Lake Districts most demanding mountain peaks, including the highest - Scafell Pike. The setting for the trek will offer trekkers a unique opportunity to take in the Lake District's stunning views while challenging themselves to an experience like no other.

Or, if you are an intrepid explorer looking for the adventure of a lifetime, join us as we hike across the Sahara Desert! You'll spend three days trekking through the Moroccan Sahara across ancient dried up river beds,

to help local terminally ill people, and their families, when life comes full circle.

Whether you are an experienced hiker, or have never so much as owned a pair of walking boots, joining St Catherine's trekking team is a decision you won't regret. You'll make life-long memories and friendships. Throughout these experiences, St Catherine's will be with you every step



sand dunes and vast sun-baked plains, accompanied by a knowledgeable support team and a herd of camels. This dazzling trip runs from Thursday 26 to Tuesday 31 March 2020.

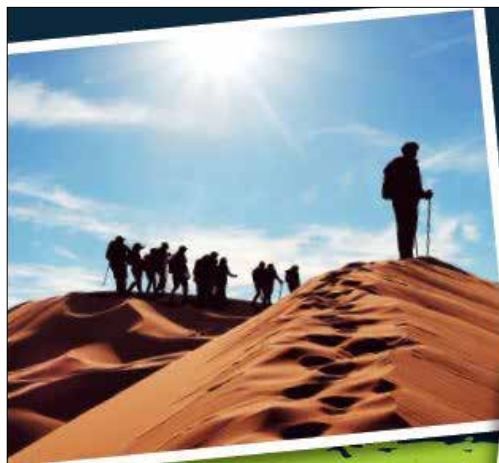
These two unique trips will give you the perfect chance to tick something off your bucket list and make new friends, while raising money

of the way to support you with your fundraising and training, and will host regular events before your trip so you can meet and get to know other trekkers.

Trudi who took on and completed St Catherine's last trek to China said: "Trekking across one of the wonders of the world, the Great Wall of China, for St Catherine's was an incredible experience. I made

wonderful friends, experienced amazing scenery, raised an incredible amount and although it was a really tough challenge, I had the time of my life. I'd do it all again in a heart beat!"

Ready to take on one of these challenges? To find out more or to sign up, please contact Michaela Clements on **01293 583063** or email: [events@stch.org.uk](mailto:events@stch.org.uk)



# SAHARA TREK<sup>2020</sup>

26 MARCH - 31 MARCH 2020

## LAKE DISTRICT

*5 Peaks Challenge*

21-23 JUNE 2019



## *Adventures of a lifetime*

Our bespoke treks are one of the most incredible ways that you can fundraise for St Catherine's. You will be fully supported for the entire Journey and we guarantee that you'll see the world as you've never seen it before. You'll push yourself out of your comfort zone but know that you're making a huge difference to our patients and their loved ones, so that no one has to face death and loss alone.

Email: [events@stch.org.uk](mailto:events@stch.org.uk)

Call: 01293 583063

Visit: [www.stch.org.uk/treks](http://www.stch.org.uk/treks)

**ST CATHERINE'S  
HOSPICE**

*Full Circle Appeal*



St Catherine's Hospice is acting as agent for The Different Travel Company, ATOL 6706. The flight-inclusive trip in this brochure is financially protected by the ATOL scheme. When you pay your registration fee you will be supplied with an ATOL Certificate and ATOL Confirmation Invoice. Please ask for it and check to ensure that everything you booked (Flights, hotels and other services) is listed on it. Please see our booking conditions for further information or for more information about financial protection and the ATOL Certificate go to: [www.atol.org.uk/ATOLCertificate](http://www.atol.org.uk/ATOLCertificate). Registered charity number 281362 and as a Company in England no. 1525404.



# TISSHAW'S

Family Law Solicitors

Tisshaws is a specialist family law practice offering advice on divorce, children and financial matters

- Fixed Fee Divorce £450 plus VAT & Court Fee
- Initial meeting £50 (inc. VAT) Up to 1 hour – No Obligation
- Fixed Fees negotiated for other family matters

Tel: 01444 472700 / Fax 01444 472701

Email: [info@tisshawssolicitors.co.uk](mailto:info@tisshawssolicitors.co.uk)

[www.tisshawssolicitors.co.uk](http://www.tisshawssolicitors.co.uk)

Tisshaws Limited T/A Tisshaws Solicitors.

Authorised and regulatory Authority SRA

No.566801



HARDY  
paving

- PATIOS
- DRIVEWAYS
- TURFING

HARD LANDSCAPING SPECIALISTS

## Enhancing your outdoor space

If your driveway is looking tired or you're in need of a newly designed patio we've got just the remedy. We'll take your ideas and with our experience transform your outdoor space into a stunning extension of your home. Our fantastic team are well regarded in the local area.

M: 07792 369807

T: 01444 456809

[hardypavingltd@gmail.com](mailto:hardypavingltd@gmail.com)

[hardypavingltd.co.uk](http://hardypavingltd.co.uk)

## JASPER FENCING CONTRACTORS



All types of fencing and gates supplied and erected

01273 843571

07801 370700

[www.jasperfencing.co.uk](http://www.jasperfencing.co.uk)

Make your wedding extra special with a car from Chariots!

Established in 1993



We provide chauffeur driven executive cars, limousine & minibuses in Sussex and the South East  
Friendly Staff & Professional Chauffeurs

- ◆ Wedding Car Hire
- ◆ Chauffeur Service
- ◆ Minibus Hire
- ◆ Limousine Hire

01273 813401 Email: [info@chariotschauffeurs.com](mailto:info@chariotschauffeurs.com)  
[www.chariotschauffeurs.co.uk](http://www.chariotschauffeurs.co.uk)

Chariots, Merlins, Uckfield Road, Clayhill, East Sussex, BN8 5RU

MORE THAN  
TYRES

01444  
241947



FRIENDLY,  
FAST AND  
FREE TYRE  
FITTING



BULBS  
WIPERS  
BATTERIES  
DASH CAMS  
NUMBER PLATES  
CAR ACCESSORIES  
MOBILE TYRE &  
BATTERY FITTING

[www.more-than-tyres.co.uk](http://www.more-than-tyres.co.uk)



# Ditchling (St Margaret's) CE Primary and Nursery School

**Paint down the slide and problem solving: The staff laid paper down the slide and the children then dipped toy cars in paint and set the cars off down the slide, making paint marks as they went down.**

After this activity set up by the staff, the children adapted the idea, setting up paper in other places in the garden, putting the cars and other objects of their choice, such as balls, in paint, and running the objects down their own paper slide. Later there was a great deal of problem-solving discussion, about where the painted pieces of paper could be displayed in the nursery, with one child saying that if it went along a certain wall, part of it would have to be cut out because of the clock, so that we could still tell the time.



## Netball/Football festival

Last Wednesday, a mixed team went to Newick to participate in a Netball Festival. We came third overall and although we didn't win any games, we defended our end really well. We showed excellent sportsmanship and worked hard to support each other throughout! Well done to everyone who played.

On the 20th March, Ditchling entered a Football Festival at Newick Primary School. Firstly, we did a warm up with some passing and shooting. Then, we played our first match against Plumpton, which we drew. After that we played



Newick and beat them 3-1. We got through to the semi-final and drew against Danehill. However, because of our goal difference, we did not get to the final. So, we played Plumpton again to see who would finish 3rd. We again drew and we finished joint 3rd. We were the only team without year sixes and had 3 year threes! We played really well and didn't lose a single game. We felt proud of our performances! We would like to thank the parents for taking us and cheering us on.

By **Lenny and Frankie** - Year 4



## Ditchling Horticultural Society Spring Bulb Show

We all woke up to gale force winds and rain! but despite the weather, the Show had to go on. Thank you so much to everyone who contributed to the Show, some exhibits suffered in transit but it was a SUCCESS.

Entries were up, thanks everyone. There were more entries from children which was very encouraging as they are the future of the Society. Although the Trophies play a historical part of the DHS, the fact that members take part makes the Show. The hall was filled with the perfume from the flowers, particularly the hyacinths. The Spring Show also included a section devoted to handicrafts, this year there was a new Trophy to be awarded for this section donated by Rosemary Taylor who has moved away to be nearer to her family but has been a strong supporter of the Society for many years. The Trophy winners were Winter Trophy, Joyce Lang; The Crosby Cup, Valerie Winter; The Taylor Trophy, Susanna Parker, and The Bannister Cup, Laura Van Stipout, Well done everyone.

Members and visitors enjoyed the tea and homemade cakes after having a look round and then there was a very well supported raffle. Thanks to all the helpers for their hard work The next Show will be the Summer Show which

will be held on Saturday, 22nd June.

**Mary Holman**

**PBM**  
TECHNICAL SERVICES LTD

We are an independent garage  
who specialise in the repair  
and servicing of  
**BMW, Mercedes and VW Audi.**

Our factory trained technicians have  
over 60 years combined knowledge  
and experience.

We use the latest diagnostic equipment  
to cater for all your needs.

**01444 242600**  
[www.pbmtechnicalservices.co.uk](http://www.pbmtechnicalservices.co.uk)

Richard@pbmtechnicalservices.co.uk  
Unit 17, Ditchling Industrial Estate, Ditchling,  
Hassocks, Sussex, BN6 8SG

# The Complete Supplier of **PVCU ALUMINIUM WOOD**



**Head Office | Brighton Showroom | Glass Showroom**  
8-9 Centenary Industrial Estate,  
Hughes Road, Brighton BN2 4AW

**Tel: 01273 691000 • Fax: 01273 691001**

**Shoreham Glass Centre | Showroom**  
266, Upper Shoreham Road,  
Shoreham-by-Sea BN43 6BF

**Tel: 01273 462 749 • Fax: 01273 453 093**

*Supplying Sussex with double glazing, windows and doors since 1970*

**Email: [info@shawsofbrighton.co.uk](mailto:info@shawsofbrighton.co.uk) • Website: [www.shawsofbrighton.co.uk](http://www.shawsofbrighton.co.uk)**



## Defibrillator Training Sessions for the local community organised and hosted by Ditchling Parish Council

Awareness sessions in Automated External Defibrillator (AED) use and adult CPR will held on the following dates:

**Thursday 30 May 2019**

**Ditchling Village Hall: lower hall  
12.30-14.00**

**Saturday 22 June 2019**

**Ditchling Village Hall: lower hall  
13.30-15.00**

If you would like to attend please sign up using the following link and we will get back to you, as places will be limited. Other dates will be released if we are over-subscribed.

**[www.bit.ly/ditchlingdefibrillator](http://www.bit.ly/ditchlingdefibrillator)**  
or email  
**[vingham01@gmail.com](mailto:vingham01@gmail.com)**



### The Great British Spring Clean

A big thank you to the many residents of Ditchling, young and old, who came out to help with the litter pick on 24<sup>th</sup> March. It was a sunny day and teams cleared the centre of the village, the surrounding roads and footpaths, filling more than 46 bags and collecting a variety of objects from chairs to tyres. What a difference it makes to us living here, our visitors and the local wildlife!



*The annual Clean Up is organised by*

**The Ditchling Society**





# LEWES DISTRICT COUNCIL

## Election of Councillors

For the Area of

## DITCHLING PARISH COUNCIL

### RESULT OF UNCONTESTED ELECTION

I, the undersigned, being the returning officer, do hereby certify that at the election of Councillors for the above mentioned Ward, the following persons stood validly nominated at the latest time for delivery of notices of withdrawal of candidature, namely 4pm on Wednesday, 3rd April 2019 and have been duly elected Councillors for the said Ward without contest.

NAME OF PERSONS ELECTED	HOME ADDRESS
Burman, Roy Haskell	Downlands House, Underhill Lane, Ditchling, BN6 8XE
Farrands, Paul Arthur	Barn Place, Spatham Lane, Ditchling, BN6 8XH
Ingham, Victoria Jane	31 East End Lane, Ditchling, Hassocks, BN6 8SX
Jones, Alan Tom	Hampers Croft, 28 Common Lane, Ditchling, East Sussex, BN6 8TJ
Leaver, John Brian	Farm Corner Cottage, Farm Lane, Ditchling, BN6 8UN
Madden, Mercedes	Address in Lewes District Council
McBeth, Donald William	51 Grand Avenue, Hassocks, BN6 8DE
Orme, Robin Anthony	86 East End Lane, Ditchling, BN6 8UR
Smith, Phillip Martin	19 The Dymocks, Ditchling, Hassocks, West Sussex, BN6 8SU

Dated: Thursday, 04 April 2019

Robert Cottrill  
Returning Officer

LEWES DISTRICT COUNCIL  
SOUTHOVER HOUSE  
SOUTHOVER ROAD  
LEWES  
BN7 1AB

Published and printed by Robert Cottrill, Returning Officer, LEWES DISTRICT COUNCIL, SOUTHOVER HOUSE, SOUTHOVER ROAD, LEWES, BN7 1AB

# How the Other Half Loves

by Alan Ayckbourn (15th to 18th May)



**Alan Ayckbourn is an Olivier and Tony Award winning playwright. He lives in Scarborough, North Yorkshire, and has written more than 80 plays, many of which have been produced in London's West End and New York as well as around the world. During 2019 he will celebrate both his 80th birthday and the 60th anniversary of his professional playwriting debut.**

In 1967, Ayckbourn achieved overnight success when 'Relatively Speaking' opened in London's West End. As a result of this, there was considerable interest in its successor which opened three years later in London. The play was 'How the Other Half Loves' and it proved that he was far from a one-hit-wonder and had the makings of a playwriting force to be reckoned with.

It's therefore appropriate that in this milestone year (it's also the 50th Anniversary of How the Other Half Loves) the Players have chosen this as our 2019 spring production.

The play revolves around three couples: Frank and Fiona Foster; Bob and Teresa Phillips; William and Mary Featherstone. Frank employs both Bob and William and is considering promoting the latter. Bob is having an affair with Frank's wife Fiona and is in constant

conflict with his own wife, Teresa. She feels Bob is neglecting her while she raises their baby and is suspicious of his actions and phantom phone-calls made to the house. When he returns late, she confronts him about his actions and he lies that he has been comforting work associate William, who believes his wife Mary is having an affair. All of this comes to a head over a meal on 2 consecutive nights in two different houses but viewed on the stage at the same time!!

The Players are pleased to welcome some new faces to the Ditchling stage for this production and look forward to also seeing you in the audience.

Tickets are on sale online at [www.ditchlingplayers.org.uk](http://www.ditchlingplayers.org.uk) as from **22nd April** or can be purchased in person at **the Larder, 2 South Street, Ditchling from 23rd April.**

## Jamie Stafford Bathrooms



**Design ■ Supply ■ Installation**



**Tel: 01273 831802**



[www.jamiestaffordbathrooms.co.uk](http://www.jamiestaffordbathrooms.co.uk)  
[enquiries@jamiestaffordbathrooms.co.uk](mailto:enquiries@jamiestaffordbathrooms.co.uk)



**SHC provides quality residential support and nursing for people with:**

- **Physical and/or learning disabilities**
- **Neurological conditions**
- **Acquired brain injury (ABI)**
- **Autism**
- **Dementia • Nursing and/or residential needs**

Our services, based in Sussex, provide a safe, comfortable, homely environment and offer the people we support somewhere that they can make their own, as well as for respite and short stays.

We support people to achieve their physical, intellectual, emotional and social wants and needs including becoming better connected to their communities and to take part in as many everyday activities as they wish, ensuring that they continue to enjoy their lifestyle with personal privacy and dignity.

## Improving quality of life

**Across our services we can offer:**

SKILLED NURSING CARE 24 HOURS A DAY

FULL PROGRAMME OF ACTIVITIES

MULTI-SENSORY ROOMS

SUPPORT TO ACCESS A RANGE OF THERAPIES TO SUIT INDIVIDUAL NEED

INTERACTIVE TECHNOLOGY SYSTEMS

HYDROTHERAPY AND SWIMMING POOLS

SPECIALIST GYMNASIUMS

IT/GAMES ROOMS

SALT CAVE

LOCAL GP INPUT

PALLIATIVE CARE



# SHC

**Your Life, Your Way**

To find out more about our homes and the services we can offer, or to join our team, please contact: [enquiries@sussexhealthcare.co.uk](mailto:enquiries@sussexhealthcare.co.uk)

**01403 217338**  
[www.sussexhealthcare.co.uk](http://www.sussexhealthcare.co.uk)





The Confederation of Roofing Contractors stands for  
**INTEGRITY, RELIABILITY  
& CUSTOMER  
PROTECTION.**

All members of the CORC  
can offer customers the  
benefit of a fully insured 10  
and 20 year back up guarantee



## WE SPECIALISE IN

**New Roofs • Flat Roofs • Tile & Slate Roofs Re-pointing Chimney  
Stacks • Leadwork • Valleys Renewed & Repaired • All Roof Repair  
• New PVC Fascias & Gutters • External Painting • Moss Removal**

**Free Estimates, No Obligation!**

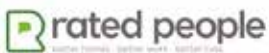
## ALL WORK GUARANTEED



- 20 years material guarantee
- Fire retardant
- Very durable
- Maintenance Free
- No joints, seams or welds
- UV resistant
- Waterproof



**Office: 01732 044 161  
Mobile: 07588 584461  
Email: [workwiseroofing@icloud.com](mailto:workwiseroofing@icloud.com)**



**[www.workwiseroofing.co.uk](http://www.workwiseroofing.co.uk)**