

Edition 12 • Quarterly

November 2020



DITCHLING

PARISH COUNCIL MAGAZINE



NEWS AND EVENTS FROM YOUR PARISH COUNCIL

Station Road Carpets

Your local flooring specialists.



We are now open as normal but please do bear with us at this time. Feel free to call the shop before coming in.

45 Station Rd, Burgess Hill - 01444 235522
41 Sussex Road, Haywards Heath – 01444 884265
8 Longridge Ave, Saltdean – 01273 302499

We offer a free estimating service and will provide “No Obligation” quotes free of charge.

stationroad-carpets.co.uk

*See in store for details. Min order applies. Not in conjunction with any other offers.

CONTENTS

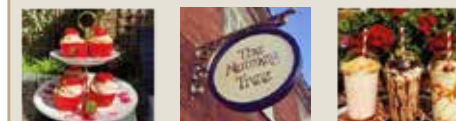
Poppy Appeal	4
The Monday Group	6
Clock Repair	8
Superfast Broadband	10
Oldland Mill	10
Village Association	12
Chairman's report	14
Art in Ditchling	16
Clerk's Corner	18
Christmas Fair	21
Ditchling History Project	22
Fire Safety	26
New Councillor	27
Free Smoke Alarm	28
Scouts	29
Tree Management	30
Cricket Club	32
Sports Day	33
MP Article	34
Mid Sussex Health Care	36
Ditchling Pavilion	38
Coronavirus Update	39

Front cover by Gordon Bain



The Nutmeg Tree

Recently refurbished Tearoom set in
the heart of Ditchling



Morning Coffee • All Day Breakfast • Lunches
Afternoon Tea & Cake • Dogs Welcome
Courtyard Garden • Cycle Park • Licenced

01273 842708

thenutmegtree@btinternet.com

6 West Street, Ditchling, BN6 8TS

For regular updates and full menu, visit:

[thenutmegtree@btinternet.com](https://www.facebook.com/thenutmegtree) [@thenutmegtree](https://www.instagram.com/thenutmegtree)

Corniche
SPECIALIST DRY CLEANING SERVICES

We'll take the
hassle out of laundry
& dry cleaning
01273 461 942

59 High St, Shoreham-By-Sea, BN43 5DE

FREE COLLECTION & DELIVERY
Book your
collection
NOW!

PLEASE SUPPORT LOCAL BUSINESSES

A big thank you goes out to all the local businesses that have advertised and supported the Ditchling Parish Council Magazine

To advertise please call 01843 523030



Supporting the
REBUILD OF BRITAIN



Published by Community Ad Web Ltd 01843 834160
email info@communityad.co.uk web www.communityad.co.uk

The views expressed in any published content are solely those of the contributors. The Publishers accept no responsibility for the accuracy of any information contained in the publication. The contents of this magazine including images may not be copied, reproduced, distributed, downloaded or displayed in any form or by any means without the prior written permission of Community Ad Web Ltd. Unless otherwise specified, the authors of the literary and artistic works in the pages in this magazine have asserted their moral right pursuant to Section 77 of the Copyright Designs and Patents Act 1988 to be identified as the author of those works. The Publishers reserve the right not to publish a submission or part of a submission that they consider defamatory or otherwise inappropriate for publication.

POPPY APPEAL

THE ROYAL BRITISH LEGION DITCHLING AND DISTRICT BRANCH

THE ROYAL BRITISH
LEGION



President:
Mrs Virginia Lewis-Jones
Vice President:
Mrs Juliet Smith, JP DL
Chairman:
Tom Jones

Unfortunately, we will not be able to hold a Parade this year. The Branch Committee will gather at the War Memorial on **Sunday November 8th for the Act of THE ROYAL BRITISH LEGION – DITCHLING & DISTRICT BRANCH:** We are delighted to announce that Mrs Virginia Lewis-Jones has graciously accepted to become our Branch President, taking over the role from her late mother, Dame Vera Lynn. We know that Virginia will continue to promote our Branch and continue the work that was so dear to Dame Vera's heart.

At this present time of writing we have been informed by RBL HQ that Poppy Appeal will go ahead following strict COVID-19 precautions. There will be no house to house collections this year. All local shops and businesses will be asked if they are willing to have a Poppy Box and collecting box. The poppy boxes will contain the usual paper poppies as well as the small metal pins with a poppy and 2020 on. We will also have a smaller amount of metal pins for

VE-75. I know that many of you like to collect these particular pins. There will also be a QR code on the boxes so that anyone with a smart phone can donate to Poppy Appeal through their phone. However, cash can still be placed in the collecting boxes. Due to COVID-19 RBL have received many more calls for help from our Veterans and their families. Therefore, our local poppy appeal/collection is needed more than ever.

Remembrance at 11.00 am to be led by Revd David Wallis. Our Standard will be present and wreaths for the fallen will be laid.

Closer to the time I will make sure that there is a poster with all information relating to Remembrance Sunday and Poppy Appeal. I will put this in Ditchling Post Office and on the notice board outside the Post Office.

If anyone requires a Wreath, poppies or remembrance cross please let me know and I will do my very best to help.

Margaret Bovill,
Poppy Appeal
Organiser



A. TWINE BUTCHERS
01273 842296
27 Keymer Road, Hassocks, Sussex, BN6 8AB

We are your local family run village butchers selling a large range of high quality local/British meat.

Come and see for yourselves.



MOOVA FOR ALL OF YOUR
REMOVALS & MAN 'N' VAN NEEDS

CALL US TODAY ON 07549 006390
WWW.MOOVALTD.COM

MAKE YOUR WEDDING EXTRA SPECIAL WITH A CAR FROM CHARIOTS!
Established in 1993

CHARIOTS WE PROVIDE CHAUFFEUR DRIVEN EXECUTIVE CARS, LIMOUSINE & MINIBUSES IN SUSSEX AND THE SOUTH EAST FRIENDLY STAFF & PROFESSIONAL CHAUFFEURS

ALL VEHICLES HAVE ANTISEPTIC WASH AND WIPED CLEAN EVERY TIME

- Wedding Car Hire
- Chauffeur Service
- Executive Travel
- Minibus Hire
- Limousine Hire

01273 813401 EMAIL: info@chariotschauffeurs.com
Chariots, Merlins, Uckfield Road, Clayhill, East Sussex, BN8 5RU

BOWLEY FUNERAL SERVICE



Paul Bowley

**INDEPENDENT FAMILY
FUNERAL DIRECTORS
& MONUMENTAL MASONS**

**Over 42 years experience in the
funeral profession**

**30 Keymer Road, Hassocks,
West Sussex BN6 8AN
Tel: 01273 841711**

**Email paul@bowleyfuneralservice.co.uk
www.bowleyfuneralservice.co.uk**

THE MONDAY GROUP

We are rights-of-way volunteers. Founded in 1961 by Harold Rowling MBE, we work broadly in the area north of the Downs from Albourne to Ringmer. We aim to help maintain and improve good access to our beautiful countryside.

The stiles we install are always of high-quality oak, therefore very durable. They cost between £150-£250 each in materials, and other structures can be much more expensive. A recent bridge that we installed in Wivelsfield cost £650 in materials. The (considerable!) labour involved is, of course, free.

We have very few regular donors. We were very grateful, therefore, to receive a generous grant from your Parish Council of £500 this year. Little did we know at the time that covid would strike and bring our community fund-raising to a halt, so thank you again, Ditchling!

Like everything else, covid has affected our work. We stood down, frustratingly in the March lockdown, watching path use increase hugely as many new walkers discovered the joy of local paths. As a result, we built up a huge backlog of work. We have gradually recommenced our work, dutifully obeying social distancing and the rule of 6 while hauling heavy oak structures into place, or slashing back accumulated months of footpath overgrowth.

Ditchling has always been at the heart of our activity, and this year is no exception, with 12 jobs (out of a total of 92) recorded in the parish since January. Our clearance team were active in the parish for the last 2 weekends as I write this, on Lodge Hill and around Ditchling Common. Last

year we did a concentrated series of stile replacements in the Parish, sponsored through the Ditchling Summer Ball. The photos below show a 'before' and 'after' of one of these stiles, on the path to Stoneywish from Farm Lane. We have been very much involved in the work of the Jubilee Pathway Trust, chaired by Rob Mills of Westmeston PC. One of our first post-lockdown jobs was the installation of 2 flights of steps on the new path alongside Spatham Lane, providing safe and pleasant passage for walkers on this busy stretch of road.



New steps installed on the path alongside Spatham Lane. Monday Group Team joined by Rob Mills, chair of the Jubilee Pathway Trust

If you appreciate the work that we do, you can help by making a donation at any time via our website:
www.mondaygroup.org



New steps installed on the path alongside Spatham Lane. Monday Group Team joined by Rob Mills, chair of the Jubilee Pathway Trust.

Jim Redwood
Monday Group (Fund Raising)
September 2020



Jolly Gel saved our marriage



To find out how ask your swimming pool shop.




Simple to use, even removes algae spores. Jolly Gel is the only proven flocculent to work with sand, Zeodere & glass.

www.mineralsi.com

FREEMAN BROTHERS FUNERAL DIRECTORS

Serving Sussex & Surrey since 1855

126 High Street, Hurstpierpoint, BN6 9PX

'The attention to detail made the perfect send off for a much loved lady'.

'Nothing was too much trouble. The Service on the day was just wonderful'.

'You've been incredibly kind at helping us ease the pain and making it as bearable as possible'.

Here when you need us.

Branches also at: Billingshurst, Crawley and Horsham

hurst@freemanbrothers.co.uk | 01273 831497 | www.freemanbrothers.co.uk



Celebrating 165 years as an independent and family-run company

Fund launched to repair the village clock on the tower of St Margaret's Ditchling

For just over 150 years, since 1868, the villagers of Ditchling have heard the clock on the tower of St Margaret's chiming the hours, the halves and the quarters. Whether you were wondering if it was time to get up, or listening to see if it was time for lunch or to leave your place of work for home, or even lying in bed awake worrying about something, the chimes marked the inexorable passage of time.

Experts say that the clock is a fine example of work by Tucker of London. It was restored in around 1920 by Gillett and Johnstone of Croydon, just after records say that in celebration of Peace in 1919 the seven bells of St Margaret's were rung in 5,040 changes (35,280 strokes) over three hours and ten minutes (see photo). To avoid the heavy weights that power the mechanism hanging down into the nave, the cables were originally diverted horizontally through a tortuous route so that there was sufficient fall. The increased friction made the winding extremely heavy and not very efficient, so about twenty-five years ago the manual winding was replaced by electric motor drives. This not only avoided the hard-physical work of winding, but also avoided the need to repeat this every two or three days.

Over the years Ditchling Parish Council with great foresight has generously made a grant to St Margaret's to support the maintenance and servicing of the clock. This has not only covered regular maintenance but also a small "Clock Fund" to cover occasions when some additional work was needed. Such an occasion has now arrived. Eerily coincidental with the pandemic, you will have noticed that for some time the clock has not been striking. Several visits by our regular maintainers, the Cumbria Clock Company, have shown that owing to lack of spares and unreliability the existing electric winding will need to be replaced. To replace the driver of the main clock mechanism along

with the mechanisms for the quarter and half hour chimes with a ten-year guarantee will cost over £6,000, while we have only £1,030 accumulated in our Clock Fund. As for many organisations, church funds have been severely impacted by the pandemic and so a campaign has been launched to help with funding. If you would like to donate you can go online to www.beaconparish.co.uk and donate to the "St Margaret's Ditchling Clock". Cheques and cash would also be most gratefully received if you would prefer and a collection box is available at St Margaret's.

Father David Wallis said, "I've been approached by many people asking about the clock and feel confident that the campaign will be successful so that we can get the repairs completed as soon as possible and the chimes we've missed so much will return to Ditchling".




www.mywoodflooring.co.uk
sales@mywoodflooring.co.uk
 07788 582 782
 45 Hassocks Road, Hurstpierpoint BN6 9QL
Checkatrade.com



Landscaping Gardeners

- Garden design & watercourses
- Paving & driveways
- Decking & fencing
- Pond maintenance
- Planting & tree work

For friendly advice and a free quote, please contact:
01273 843283
www.standens.net
info@standens.net



Traditional Karate

The Triangle - Burgess Hill
Every Monday

Pee Wee:	Juniors:	Adults:
5-7 years 4pm-5pm	8-15 years 5pm-6:30pm	15+ years 6:45pm-8pm



Julia Sensei
Juniors





Jami Sensei
Adults

Shorinjiryu Renshinkan Karate Do 37 years of teaching excellence
 01444 454827 / 0797 2146 264
jtrenshinkan@btinternet.com / jamiesenseirenschinkan@gmail.com www.renschinkan-karate-england.org.uk

SSALC Update: Superfast Broadband Project September 2020

This update is provided by East Sussex County Council to SSALC on the latest development with the ongoing rollout of fibre broadband in East Sussex.

Rural Gigabit Voucher Scheme Top-up

The County Council is pleased to announce that it is supporting eligible businesses and residents in rural areas of East Sussex to access gigabit-capable technology through a half million pound additional investment in digital connectivity.

Eligible applicants applying for the Government's Rural Gigabit Voucher scheme, offering vouchers to businesses of £3,500 and residents of £1,500, will automatically receive an additional £1,000 per applicant on top of the Government's funding towards the cost of installing new fast and reliable connections.

Further details can be found through this link:

<https://www.esussex.org/PublicContent/National%20Schemes>

Rupert Clubb

Director Communities Economy and Transport

Contact the team: broadband@eastsussex.gov.uk

The Oldland Mill Trust

This is a Registered Charity. Our constitution includes two representatives, one from Hassocks Parish Council and one from Ditchling Parish Council. Roger Broadbent has served in the latter capacity for some years and has played an important part in moving our organisation forward. Roger has now moved to Hassocks and had to stand down on health grounds so we are looking for a replacement to represent Ditchling.

As I'm sure most readers will be aware, Oldland Mill is over 300 years old and has been completely restored to full working order entirely by local volunteers. Indeed, we are the oldest regularly working windmill in Sussex and possibly the UK. Our Stone Ground Flour can be purchased direct from the mill (in 'normal times') or from a number of local outlets including The Ditchling Museum of Art and Craft.

The COVID-19 pandemic this year has prevented us from holding any open days which are our main source of income. However, due to the continuing support of many members of Oldland Mill Trust, the Turner-

Dumbrell Foundation and, more recently, the organisers of the Ditchling Ball, our finances remain sound.



As Chairman of the Oldland Mill Trust I'm writing to invite a resident of Ditchling to volunteer to join the Trustees as a representative of Ditchling to mirror the Hassocks volunteer. We hold four Trustees evening meetings a year together with an AGM, usually in the Hassocks Parish Centre. If you

would like to learn more about the Trust please do not hesitate to contact me. Thank you.

Fred Maillardet Chairman, Oldland Mill Trust
Tel: **01273 842342**.

TISSHAW'S

Family Law Solicitors

Tisshaws is a specialist family law practice offering advice on divorce, children and financial matters

- **Fixed Fee Divorce £450 plus VAT & Court Fee**
- **Initial meeting £50 (inc. VAT) Up to 1 hour – No Obligation**
- **Fixed Fees negotiated for other family matters**

Tel: 01444 472700 / Fax 01444 472701

Email: info@tishawssolicitors.co.uk

www.tishawssolicitors.co.uk

Tisshaws Limited T/A Tisshaws Solicitors.

Authorised and regulatory Authority SRA

No.566801



Your local friendly family run garage with over 40 years experience in all aspects of vehicle repairs, old, new, classic, sports & prestige.

All Makes & Models • M.O.T's & Servicing • Repairs
Diagnostic Specialists • Wheel Alignment
Tyres & Exhausts • Clutches • Cambelts • ECU Remapping
Air Conditioning • Brakes • Brake Disc Skimming
Welding & Fabrication • Engine Tune-ups
Petrol Injector Testing & Servicing • Diesel Specialists
Carbon Cleaning • Courtesy Cars Available



www.rwmotorengineeringltd.co.uk

Unit 1, The Old Brickworks,
Station Road, Plumpton Green
East Sussex BN7 3DF

Tel: **01273 891393**
Email: rwengineering@live.co.uk



DITCHLING VILLAGE ASSOCIATION

Brief Update | Volunteer Opportunities | Beacon Parish COVID-19 Response

Brief Update

Unfortunately, due to COVID-19 and its impacts on our community there is relatively little happening with most of the village's clubs, societies and groups. The impact of coronavirus has caused many planned events to be lost this year.

DVA Coffee Mornings

The DVA has decided that it will continue to cancel the monthly DVA coffee mornings until at least May 2021. Although the hall is now open for bookings and events, the current restrictions and requirements are not suitable for an event designed for people to meet up with friends and chat. We will continue to support Ditchling Village Hall, an essential community asset, by paying the hire fees as usual.

Ditchling Fair

The DVA organises, and gains almost all its income from, Ditchling Fair. This year's event was cancelled and it will return on 18th June 2022.

DVA Annual General Meeting

Our AGM was due in May 2020 but we have agreed to defer it until May 2021 and look forward to seeing you then.

DVA Clubs and Societies Open Day

We were also forced to cancel our Clubs and Societies Open Day - a daytime event

where everyone is invited to drop in and find new hobbies, clubs and sports to get involved with. This was due for 26th September 2020 but is now cancelled. We have booked our next event for Sat 18th Sept 2021

DVA Newcomers' Party

Another casualty is the Newcomers' Party - an event that welcomes new residents to the village - that was scheduled for 6th March 2021 and this is also unlikely to be viable and we will plan another for March 2022 (date TBA).

Volunteer Opportunities

DVA - Chair

Catharine Robinson, our current Chair, is standing down. We are seeking a replacement - if you would like to find out more about the role and what it involves please contact: **Catharine - chair.dva@ditchling.com**

Ditchling Village Hall - Bookings Secretary

The village hall is seeking someone to take over coordinating and managing bookings. The diary is now online with a simple booking and billing system. Full training and support will be provided and the commitment is not onerous but provides an essential service to Ditchling. To find out more contact: **Gemma - bookings@ditchlingvillagehall.uk**

HKD Transition

- Repair Café Volunteers

A new monthly café in Hassocks (coinciding with the Market) is being set up by HKD Transition - aiming to repair items rather than throw them away. Repair cafés have skilled volunteers who can help people repair their broken household item, like clothes, household electrics, technology, woodwork, children's toys and furniture. They are looking for volunteers who would like to help out - find out more or contact: **repaircafe@hkdtransition.org.uk**

Beacon Parish COVID-19

Beacon Parish COVID-19 Response

If you know someone who is self-isolating or cannot get out and who would like some support, ask them to call and leave a message on **01273 921 668**.

For further details please go to **www.beacongoodneighbours.org** They are also seeking volunteers.



With the constant increase in fuel prices, BSW can save you money with your fuel bills.

Your local Heating and Renewable experts, keeping Sussex warm for over 50 years!

- Reduce your monthly energy bills
- Reduce your greenhouse gas emissions
- Claim the RHI – Renewable Heat Incentive & receive tax-free cash payments for 7 years

To find out more, telephone:

01444 831138



www.bswenergy.co.uk



*dependant on size and position of installation

HELLO AGAIN AND WELCOME

to our November edition of the Ditchling magazine.



My name is Don McBeth, and I am still the Chairman of Ditchling Parish Council.

The reason for that is that due to the exceptional circumstances we find ourselves in regarding the

Corona Virus, the Council has not quite been running as it normally would. However, most things have been possible due to the assistance of technology, which has been of great assistance during these times, as many have discovered the use of 'virtual meetings' which have been used by the Council with great success.

Members of the public are still welcome to attend the Parish Council meetings and details of how to do this are published on the agenda which is available on the website and notice boards. Following the government announcement of further easing of lockdown restrictions from 4 July, both NALC and SLCC strongly advise local councils to continue to meet remotely, without the need for face-to-face contact, so for the foreseeable future remote meetings will continue.

The virtual meetings using Zoom which have been very successful, if a little long winded, as I had to watch my screen closely to see who at any one time was waving their hand. The photo below gives you some idea of what that looked like, and no, contrary to popular opinion we are not all asleep!

When we received instructions from the government back in March regarding social distancing, we had our last face to face meeting which was held outside in the car park and we passed a resolution for Sarah our clerk to have the delegated powers to make some basic day to day decisions without referring them to the full council, however on most occasions, this involved communication with the Chairman/ Vice Chairman This included making comments on Planning Applications which involved communication with the Planning Committee and Clerk to ensure the Council has been able to consider and comment on applications within the Parish within the required deadlines.

The result of this has seen a massive increase in e-mail activity between the council members and the Clerk, thus ensuring the general smooth running of the parish. It also meant that like many other councils we have been unable

to run our usual AGM, and thus the officers of the council remain in their current posts until such times as we meet for the AGM which should be May 2021.

The Council had two vacancies and we are delighted to confirm that Delia Forrester has been co-opted onto the Council and we welcome her and look forward to her attending her first meeting in September. We still have a vacancy so if you are interested in knowing more about what being a Councillor involves, please do contact the Clerk for an informal chat, it would be lovely to have a full complement of 11 members.

Since the last edition we have seen in June the sad passing of Dame Vera Lynn. As a result of this we have had numerous requests as to what would be a fitting tribute for the Village to honor the great lady. It was decided that we should not hurry the decision, and that we would allow time for reflection into next year before we decide on the way forward.

We also saw with the 75 anniversaries of both VE day and VJ day, a ceremony at the war memorial commemorating all those who served their country during the Second World War. We were honored at the ceremony of VJ Day to have the presence of Peter Field the Lord Lieutenant of East Sussex. He is seen here presenting a wreath of the war memorial accompanied by Vera Lynn's Daughter, Virginia Lewis-Jones.



This edition has been hard to pull together, due to so many clubs and associations in the village not being able to meet and activities not taking place. We therefore hope that as this article is written with schools reopening and other different areas becoming less restricted, we will have some more news to report from around the village in our February issue. Keep well and safe and if you do have an article of interest for our future magazine editions, we please do get in touch with the Deputy Clerk, Derek Blackhall on clerk@ditchling-parish.gov.uk

Don McBeth,
Chairman,
Ditchling Parish Council



A little Video can be found here:-
<https://vimeo.com/437626292>



ART IN DITCHLING

The Guild of St Joseph and St Dominic, which gives its legacy of calligraphy and the arts and crafts movement to Ditchling village, is celebrated in this article, which notes the 100th anniversary of its founding in 1921.

In 1913 Eric Gill had moved from Sopers in the High Street to Hopkins Crank on Ditchling Common, to try his hand at self-sufficiency. He bought a house and two acres of land, and eventually both he and his family began producing their own milk, butter, eggs and bread, as well as making their own clothes. He was soon joined by Hillary Pepler and his family, where they were joined by Desmond Chute.



The Peplers in front of their home, Fragarbarrow House, off Ditchling Common

After Pepler's arrival in Ditchling, he set up his own press, the Saint Dominic's Press, which in 1916 began producing all manner of printed works.



The Guild's symbol was the Hound of St Dominic, painted here by David Jones in 1922

In 1920-1921 Eric Gill, Desmond Chute and Hillary Pepler became the founder members of a Catholic community of craftsmen set up on Ditchling Common, taking the name "The Guild of St Joseph and St Dominic". The community was based upon craft, agriculture and the principles of "a religious fraternity for those who make things with their hands". Their motto was "Men rich in virtue studying beautifulness living in peace in their houses".

The Guild grew steadily larger during the early 1920s. By this time, a whole rural community had come into being, consisting of many workshops, a laundry, allotment garden and a chapel.



Peter Brennan's sketch of the chapel

After 1924, all the original members of the Guild were Tertiaries of the Order of St. Dominic (the third level of monasticism), although there were other Tertiaries in the community. A Tertiary is defined as a lay associate of a Christian monastic organisation. In 1928, the Guild's strict regulations were relaxed, and it was agreed that not all members had to be Tertiaries. At this time, the Guild was being maintained by Joseph Cribb,

Hilary Pepler, George Maxwell and Valentine KilBride, who were joined in 1927 by Bernard Brocklehurst.

Socially, the Guild was thriving. The climax of each year was August 4th, St. Dominic's Day, when a whole programme of events took place. Sports activities for children, tea in the orchard, drama and times for amusement.

1921 George Maxwell, builder and carpenter, and David Jones, poet and artist, join the Guild.

1922 Philip Hargreen wood engraver joins.

1924 Eric Gill moves to Capel-y-ffin in Wales, David Jones and Philip Hargreen follow him and Hilary Pepler moves into Hopkins Crank.

1925 Valentine KilBride, a weaver, joins the Guild.

1926 Pepler writes plays for puppets and mimes.

1931 Dunstan Pruden, a silversmith, joins the Guild.

1937 Hilary Pepler, withdraws from the St Dominic's Press.

1938 Mark Pepler his son, takes over and later moves from the Common to Ditchling Village, using machinery for fine colour printing.

Desmond Chute left the Guild in 1921 to become a priest. Joseph Cribb, George Maxwell, Valentine KilBride, and Dunstan Pruden all remained to carry on the Guild's traditions.

Joseph Cribb remained a member until his death in 1967 by which time new members such as Ewan Clayton, Edgar Holloway, Jenny KilBride, and Winefride Pruden had joined, ensuring that the Guild continued until its final closure in 1989.



Dunstan Pruden working in the Guild workshop at the end of Folder Lane.



PBM
TECHNICAL SERVICES LTD

We are an independent garage who specialise in the repair and servicing of **BMW, Mercedes and VW Audi.**

Our factory trained technicians have over 60 years combined knowledge and experience.

We use the latest diagnostic equipment to cater for all your needs.

01444 242600

www.pbmtechnicalservices.co.uk

Richard@pbmtechnicalservices.co.uk
Unit 17, Ditchling Industrial Estate, Ditchling, Hassocks, Sussex, BN6 8SG



**SUSSEX
PROFESSIONAL
SERVICES**

Tel No. 01273 569120
Mob. 07704 973357
info@sussexprofessionalservices.co.uk

We are a friendly and local firm with over 20 years' experience, providing all the accounting and tax support your business needs.

Offering competitive rates:

- Personal tax returns
- Business accounts
- VAT returns
- Payroll

(including auto enrolment processing and CIS Returns)

Other services include:

- Bookkeeping
- Business start up and registration
- Accounts software installation
- Excel training and support.

Contact us now for a free initial consultation.

Brighton Piano Warehouse

The Lowest Prices in the South

- New & Second-hand Pianos
- Grand & Upright Pianos
- Digital Pianos
- Covers, Stools & Accessories
- Pianos Wanted - Best Prices Paid
- Concert Hire
- Piano Removals



01273 601 989

www.brightonpianowarehouse.co.uk

43-45 Bonchurch Road, Brighton, BN2 3PJ

Free Local
Delivery &
First Tune

100%
SATISFACTION
GUARANTEED



Parish Council Grant Update

In 2019/20 the Parish Council awarded grants to all 5 applicants for the following causes which totalled £4,563.

Ditchling Streat & Westmeston Sports
for the restoration of sports cups.

Underhill Lane Community Association
for the purchase of a grit bin.

Ditchling Streat & Westmeston PCC
maintenance of the church clock.

The Monday Group
funding towards improvements to local rights of way in the area.

Ditchling Pavilion Club
towards the pavilion refurbishment project.

We are delighted that these groups have put together reports on how the money was used which is lovely to read about and we hope will encourage other groups to come forward to apply this financial year. The Parish Council has the sum of £3,000 in its 2020/21 budget allocated to grants. Applications will be considered at the December Parish Council Meeting to be held on the 14th December 2020 from 6.30pm remotely via the Zoom platform. If your organisation would like to apply for a grant, please read the Parish Council Grants and Donations Policy below and apply to the Parish Clerk for an application form at parishoffice@ditchling-pc.gov.uk or 01273 844733. All applications are required to be received by the 1st December 2020 so the Council can consider each application at the December Parish Council Meeting before making a decision on allocation of funds available.

If you have any further queries in relation to an application, please contact the Parish Clerk.

Ditchling Parish Council - Grants and Donations Policy

Policy Statement

A grant or donation is any payment made by Ditchling Parish Council to be used by an organisation for a specific purpose in the furtherance of the wellbeing of the community, either generally, or for a specific purpose and which is not directly controlled or administered by Ditchling Parish Council. The purpose of any grant or donation given by Ditchling Parish Council is to support initiatives in the local community and to help create opportunities for the residents that are not funded by Ditchling Parish Council

Application Procedure

Organisations requesting financial assistance are required to submit by 1st. December, at the latest, in the year preceding their funding requirement.

- A completed application form,
- Copies of their last year- end audited accounts,
- The number, or percentage, of members that belong to the organisation and that live within the Ditchling Parish Area,
- Details of any restrictions placed on who can use/access their services,
- Confirmation (on the application form) that it concurs with the Parish Council's Equal Opportunities Policy, or give details of their own policy,
- Organisations will normally be expected to have clear written aims and objectives, a written constitution, and a separate bank account controlled by more than one signatory.

Assessment Procedure

At the Parish Council's annual budgeting meeting in October each year an amount will be set aside for grants to be spent in the following financial year commencing 1 April. This amount will vary depending on the Council's financial position at the time, but as an indication, the council awarded grants totalling £4,563 in 2019/20.

The grants budget will then be published on the Council's website and in the November edition of the Ditchling Parish Council Magazine. Organisations will be invited to make applications using the application form available from the Parish Council Office or website.

Applications will then be considered by the Parish Council at its meeting in December when the applicant, as well as members of the public, will be able to speak on their application. Decisions on all applications will be made at that meeting after which the applicant will be formally notified of the decision and, in the case of an award, any conditions attached to the grant.

In the event that the grants budget is not fully taken up in December, the balance will remain in the Council's budget and organisations will be able to make applications at any time in the financial year. Details of remaining funds will be published on the Council's website and in the Parish Council Magazine.

Once the grant budget is exhausted, no further applications will be considered until the following year's grants budget has been set unless a grant is required for emergency purposes in which case the council may wish to draw upon its contingency budget.

Information for Applicants

- 1 It is a condition of any grant application that the group or project must bring direct benefit to the residents of Ditchling. All applications must clearly demonstrate how this will be achieved. The scheme provides start-up awards for new as well as grants for existing organisations.

Applications will be considered for day-to-day running expenses and individual projects.

- 2 Grant application forms are available from the Clerk or from the Parish Council website. Application forms must be submitted along with the latest set of the group's audited accounts. It is important that all questions on the application form are fully answered and that any appropriate additional information, which supports an application, is provided.
- 3 Grant applications cannot be made retrospectively.
- 4 Applications WILL NOT be considered from:
 - a. Organisations intending to support or oppose any particular political party or to discriminate on the grounds of race or religion.
 - b. Private organisations operated as a business to make a profit or surplus.
 - c. "Upward funders", i.e. local groups whose fund raising is sent to their central HQ for redistribution.
 - d. National Charities.
- 5 Applications will not normally be considered from national organisations or local groups with access to funds from national "umbrella" or "parent" organisations, unless funds are not available from their national bodies, or the funds available are inadequate for a specified project.
- 6 Applications from religious groups will be considered where a clear benefit to the wider community can be demonstrated irrespective of their religious beliefs. Compliance with this requirement will need to be demonstrated throughout the project.
- 7 Schools will only be grant aided for environmental purposes or if, in the opinion of Ditchling Parish Council, their application is for the benefit of the wider community.
- 8 Applications from education, health or social service establishments will be considered where the organisation can demonstrate that it is working in partnership with other groups and where there are benefits to the

Continued ➤

Parish Council Grant Update *Continued*

wider community within the parish.

9 It must be understood that any grant must only be used for the purpose for which it was awarded unless the written approval of Ditchling Parish Council has been obtained in advance for a change in use of the grant monies, and that any unspent portion of the grant must be returned to Ditchling Parish Council by the end of the financial year in which it was awarded. The Parish Council may request proof of expenditure.

10 Ditchling Parish Council reserves the right to request any further information that it deems necessary to assist the decision-making process. Account will be taken of the amount and frequency of previous awards and of the extent to which funding has been sought or secured from other sources or own fund-raising activities

11 Ongoing commitments to award grants or subsidies in future years will not be made. A fresh application will be required each year.

12 The size of any grant awarded is at the sole discretion of Ditchling Parish Council.

13 Ditchling Parish Council reserves the right to refuse any grant application

Only one application for a grant will be considered from any organisation in any one financial year

Assessment of Applications

Applications will be assessed using the following criteria:

High priority will be given to projects where there is a tangible or visible outcome. These could be capital projects such as those involving physical improvements to buildings,

the landscape or local ecology and which brings direct benefits to specific members of the community, such as users or members of the organisation concerned, or to local residents generally. Equal priority will also be given to non-capital or revenue projects involving specific support for organisations planning to introduce a new scheme or expand an existing scheme for its members or other users such as recruiting and training volunteers, buying in specialist coaches or a marketing campaign to recruit new members.

Low priority will be given to proposals which simply provide financial support or subsidy to an organisation for its annual ongoing running costs and which produce little or no tangible benefit for specific members or user groups or for the community generally.

Notwithstanding the above the Council will look more favourably at applications which include some complimentary or match funding. This could come from the applicant organisation itself or from a third party such as a national or local charity, professional body, government organisation, commercial sponsor or public or private donations. Applications which require the Parish Council to provide all or nearly all the funding for a scheme will therefore be viewed less favourably.



Sarah Mamoany

Ditchling Parish Council Clerk

DITCHLING CHRISTMAS FAIR – POSTPONEMENT

As we looked at this year in January, by the time of writing this the Christmas Fair committee and stallholders would have been beavering away sorting out the logistics for this year's event. We were basking in the glow of how much fun and what a buzz there was in the village last December. But this is 2020. Vision has been clouded all year and in September the committee took the sad but inevitable decision that we would have to postpone for a year.

We have benefited from the ability and generosity of venues in the past two years for the provision of entertainment and stalls. It became obvious that we could not achieve the correct social distancing requirements within these this year. Some would not be able to provide space at all, as their own constraints are such that they are using every nook and cranny they can find. Planning for this and knowing that any turnout would be unpredictable as well means that all our bright ideas for what we could provide were heading into problems. Some of us would also not be in a position to be present. Like a card house in a light breeze, it was all starting to fall apart.

By the time that you are reading this there may be some impromptu 'pop-ups' planned by individuals, so it is worth keeping an eye open for these. Depending on government guidance some of the businesses on the High Street may offer late night opening, but

again, that is an unknown at present. Choirs in churches are not viable, but there may be access to food.

Included with this piece are some photographs provided by stallholders, to illustrate the intention to keep going, and to add some sparkle. There was very little surprise when we let people know. But please do take a look at all the businesses that operate in the village and think of using them for present buying in spite of them all not being together in one place on one festive evening. We are surrounded by talent and this needs input of trading to keep it making us all proud.

The committee and stallholders extend their hopes and wishes for everyone to be as safe and calm as it is possible to be this difficult year. We wish you as reasonable a Christmas and holiday time as possible and look forward to welcoming everyone to the Christmas Fair in 2021.



BEDLAM BREWERY



TILIA PUBLISHING UK



KATE BAKER-BROWN

The Committee and stallholders from the **Ditchling Christmas Fair** would like to extend to everyone in the village their thanks for supporting local businesses and best wishes for health and well-being over the Christmas Season and into a different year.



HONEY BEESWAX



www.ditchlinghistoryproject.org

Ditchling History Project is your local history society.
We research all aspects of the parish's history:
its families; its buildings; its industries; its arts & crafts;
its church & chapels; its clubs and societies.

We maintain an extensive and growing database which we aim to make available online. We are 'project' based because we never cease investigating the history of this amazing parish. Historical records, the maps, census returns, trade directories, house deeds and word of mouth are some of our many sources. We are always ready to learn from those who know something of Ditchling's history both past and recent. We welcome anyone who would like to join us: visit our website www.ditchlinghistoryproject.org and complete the questionnaire you'll find there.

Project News

For obvious reasons we have not been able to meet since the lockdown and have not been engaged in any group projects. However, individual members have been working very hard. Roma has completed some revealing and fascinating, in-depth research into the history of the building that stood on the site that is now the Village Hall, Eastfield House. In future editions we will aim to give you more information on this. Carole has completed the transcriptions of our oral history tapes, a welcome addition to our database. And some members have been keeping diaries of their experiences during the pandemic. Throughout

we have continued to receive, via our website www.ditchlinghistoryproject.org, enquiries from people researching their Ditchling ancestors. We do our best to help with these using our database and other records and, in some instances, first-hand knowledge.

Then

One of the casualties of the pandemic has been the annual London to Brighton charity bike ride which faces the challenge when they get to Ditchling of the climb up to the Beacon. Of course, bicycles are only one form of traffic that has used Beacon Road in past centuries. Farmers with land to plough on the Downs and those with Commoners' rights to graze cattle and sheep have used it for centuries to access the pastureland with their carts drawn, originally, by horses or oxen. As did quarrymen accessing the chalk and flint quarries and lime kilns on the Downs.

In the 18th century it was known as 'Ditchling Castle Hill' and the traffic would have included the coaches plying between London and Brighthelmston, then the newly fashionable resort, passing through as they went the tollgate located where Paygate Cottages are now. The turnpike road was not completed until 1793. In his book 'Brighton and its Coaches' W.C. Blew says:

"In 1794 there appears for the first time an advertisement of a coach running to London through Ditchling ... [It] left Brighton at 8.00am on a Monday and Friday and returned at 7.00am on Wednesdays and Saturdays...in Summer an additional journey 'thrice a week each way'...an extra horse was taken up the Beacon and a boy sent back down with the horse."

By 1849 the coach was calling at Ditchling

summit stood an immense scaffold, in height about fifty feet, visible for many miles distant. It was the duty of a number of the Royal Engineers to transmit messages from this scaffold by signal to different places..."

After the building of the London to Brighton railway line the traffic declined considerably and the road over the Beacon became largely disused other than for agricultural purposes. Such was the level of disuse that



every morning at 10.30am going to London and at 4.00pm coming back. The flat 'platforms' every few hundred yards up the hill were to give the horses a rest without the coaches pulling back down.

As the name implies Ditchling Beacon was a vantage point for the lighting of beacons to warn of invasion or to celebrate events as, for example, were the beacons lit to celebrate Queen Victoria's Golden and Diamond Jubilees. Villagers and 'services' personnel would make their way up. Writing in 1901, the local historian Henry Cheal says that "Before the days of the electric telegraph, the hill was an important signalling station, and on its

some Ditchling residents could remember tobogganing down the hillside in the first half of the 20th century, crossing the bends in the road as they did so. Indeed, one of our members, Valerie, recalls tobogganing down the road as late as 1947. Nevertheless, these were the early years of the motor car and the occasional one did venture up the road (see photo). 'The Beacon', a weekly news-sheet, it reported in its June 4th 1920 edition that "motor thieves had been busy in the small hours at several houses on the Hill road". Surely one of the earliest such criminal cases!

And the historical geographer Peter Brandon in his book 'Sussex' tells us that by 1903

Continued ➤



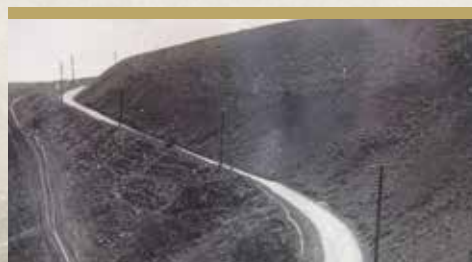
◀ "Brighton had become a mecca for cyclists, who raced down Reigate Hill and up Ditchling Beacon". In this age of electric bikes, it's hard to imagine tackling it on penny-farthings!

Now

WW2 represented a turning point in the traffic using Beacon Road and the climb up 'the Hill'. Like many other places on the south coast, Ditchling and the surrounding area was a location for military preparations for the D Day landings. The Downs above the village were used as an army battlefield training ground. Metalled tracks were laid to enable armoured vehicles to reach the top – hence the so-called 'Tank Track' leading up the Downs from Underhill Lane. However, villagers were prohibited from being on the Downs after 7.00am. Stock and fences had to be inspected before that. The army practised firing howitzers from Ditchling Common over the village onto the Downs.

After the war, car traffic on the road increased year on year. In a survey conducted on a weekday in July 2006 1,987 cars were recorded travelling northbound and 2,052 cars travelling southbound on the Beacon Road. Indeed today, improbable as it may seem, this unclassified road is regarded by the county councils as the fall-back north/south route to Brighton should the A23 ever be closed off for any reason.

But of course, it's still used for agricultural purpose and even more so as 'a mecca for cyclists'. In 1975 the British Heart Foundation staged the first annual London to Brighton bike ride which lays claim to being the oldest charity bike ride in Europe and attracts over 20,000 participants. And in 1994 a stage in the Tour de France took the cyclists up 'the Hill'.



Simply Blinding

Our advice, ideas and quotations are without cost or obligation.

We are the local, family run shutter and blind company, with over fifteen years' experience. PFI accredited and experts in somfy motorised systems. Approved by local trading standards via the office of fair trading "buy with confidence" scheme.

Call us now for a free no obligation visit on 01273 880 480
jamie@simplyblindingltd.co.uk | www.simplyblinding.co.uk

Jamie Stafford Bathrooms.co.uk

Home Refurbishment Kitchens & Bathrooms

01273 831802
enquiries@jamiestaffordbathrooms.co.uk

ELLIS MOTORS

RELIABLE & DEPENDABLE CAR GARAGE SERVICES

- / Car Service
- / Car MOTs
- / Car Tyres
- / Car Exhaust
- / Car Brakes

Opening Hours
 Monday-Friday 08:30 to 18:00
 Saturday-08:30 to 13:00

Unit 12-13 Sheddingdean Business Centre,
 Marchants Way Burgess Hill, RH15 8QY
 Phone: 01444 480606
info@ellismotors.co.uk

AMS PROPERTY SERVICES | **PRO PLASTICS** | **ALL YOUR PROPERTY NEEDS**

- Fascias
- Windows
- Doors
- Gutter Clearance
- CCTV Gutter Maintenance

07702 854373 01273 400162
www.ams-property-services.com



FIRE SAFETY FOR CARERS

Are you caring for someone who would find it difficult to cope without you?

Would you like to learn how to make your home as safe as possible for you, and the person you are caring for?

East Sussex Fire and Rescue Service are offering FREE online fire safety training and advice for all live in or visiting carers.

Taking only one hour, we will share advice and examples of the causes of fire in the home and how to prevent them. They will include electrical safety, kitchen safety, bedtime routines and evacuation advice.

We will also explain how to arrange a home safety visit from one of our specialist teams who can offer extra advice and equipment to keep the home safe.

BOOK NOW

carers@esfrs.org | 01323 462333

NEW COUNCILLOR

I am Delia Forester, and I live in South Street, Ditchling, where I moved from Brighton 2 years ago. I have been "around the village" for about 5 years because my family live here and I associated myself with the Neighbourhood Plan.

Until I retired, I was a senior lecturer at Brighton University, teaching sustainable building construction, housing design, and Town Planning. I now spend my time helping with grandchildren, trying to make something of my small garden, and walking my dog Lucy around the village.

I am a member of the WI, and the Horticultural Society, and the Ditchling Society, and I very much enjoy life here. Now in this time of COVID, when some people have lost jobs, many of our activities are curtailed, and people are

fearful of going out, our village life has been restricted. But I still feel fortunate to live in such a beautiful, sociable, caring community.



I have recently been co-opted onto the Parish Council, a role I take with some trepidation. I still feel "new" and that I "don't know much". However, I hope that my love of and enthusiasm for the place and my previous experience as an elected member of Brighton and Hove City Council (2003-2007) where I was deputy Chair of the Planning Committee, will prove useful to the Parish Council.



richard ewen architects



A full one-stop-shop service, taking your design from conception right the way through to completion

- Eliminate the need to contract additional services
- Renovations and new builds, for both residential and commercial properties
- Party Wall Surveying
- Structural Engineering
- Project Management
- Interior Design



E: info@richardewenarchitects.co.uk | T: 07966 261660
www.richardewenarchitects.co.uk

THE GREEN MAN

Cask Ales - Quality Food - Restaurant - Bookings Taken



- Music and quiz nights
- Steak night every Thursday
- £10 meal deals (Monday and Tuesday evenings)

01825 790656
Horsted Keynes, West Sussex, RH17 7AS

To advertise please call
01843 523030

FREE SMOKE ALARM & FREE FIRE SAFETY IN THE HOME TELEPHONE ASSESSMENTS

Are you sure you are safe from fire?
Do you know what to do in the event of a fire?

As a result of COVID-19 Coronavirus, we are temporarily changing how we deliver our Home Safety Visits to the community in East Sussex and Brighton & Hove.

To reduce the risk to you and your family, we are carrying out special virtual visits over the phone where we can talk to you about the fire risk in your home, after which we can: Post you further information. Post you smoke alarms to fit yourself or if the fire risk is high and no one in your home is able to fit a smoke alarm we will take protective precautions and fit smoke alarms for you.



Smoke Alarms save lives but only if they're working. If you don't have a working smoke alarm on every level of your home please call us ASAP.


You should test your smoke alarms regularly, at least once a month.



Do you use heaters to dry clothes?

Do you keep them switched on over night?



Do you overload plugs? 
Are your wires damaged or frayed?

We are still here to help...
To book a *FREE* telephone assessment please call 0800 177 7069



REMEMBER, IN THE EVENT OF A FIRE, GET OUT, STAY OUT AND CALL 999.

1st Ditchling Scout Group

Well, I guess it goes without saying there has not been much going on this Summer since face-to-face scouting was suspended in March.

However, there have been some badges completed online and a good amount of camping at home going on.

Some children have even managed to complete their Chief Scout Bronze and Silver Challenge awards. Laurence Wakeford even managed to complete his Chief Scout Gold Challenge, that's no mean feat at the best of times!

Well done all of you.

We are intending to start outdoor section meetings in a couple of weeks after much admin, red tape and thorough Risk Assessing that had to be approved by West Sussex County Scouts executive.

So, I'm afraid there are no pictures this time but hopefully we will have a little more to say for ourselves come Christmas time... assuming we don't get suspended again!



1st Ditchling Scout Group
November 2020


DAVID SHEPARD
BATHROOM & PLUMBING



Covering all small jobs from:-

- Kitchen and Bathroom tap installation
- Toilet repairs and replacements
- Hot water tanks
- Electric and power shower installations
- All Maintenance work

Contact David
Based in Burgess Hill
01444 250 262
07952 544 739
Email: davidshpard12@gmail.com

Checkatrade

Providing plumbing and heating services to residents and businesses in Burgess Hill, Haywards Heath and Mid Sussex.

To advertise please call
01843 523030

Management of Parish Council owned trees

One of the roles of the Parish Council is to ensure its duty of care in relation to the management of trees in its ownership and this involves carrying out regular tree surveys. The Council instructed a full survey which was carried out in March 2020; following the completion of this, we were provided with a report including recommendations of what work is required and the timeframe of when these works should be completed.

The Recreation Ground and Burial Ground areas contain 257 trees, mainly Common Ash, Oak, Sycamore, Common Hawthorn together with around 35 other species. The recent survey advised that many trees appear to be currently in fair to good health, however we do have signs of Pythophthora (bleeding canker) on some of the Horse Chestnut trees and this will lead to some being removed.

In addition, ash dieback, a disease caused by the fungus *Hymenoscyphus fraxineus*, is causing concern over the future health of ash trees in the UK and it is forecast that most ash trees will become infected. It is possible that we may lose up to 80% of all the ash trees on this site and therefore the Council will need to consider budgeting for felling and replacement of trees over the next couple of years. The survey highlighted 10 trees that needed immediate works carried out to them and this work has been completed, this sadly involved felling a large ash, elm and horse chestnut. The next stage of the maintenance involves approximately 80 trees where some just require minor works such as severing ivy at the base of the trees, removal of deadwood, but unfortunately will also involve felling some further trees. Of course, trees are never felled without a valid reason and the Council will need to also consider replanting in the future.

The Council do have earmarked reserves for tree works in addition to the annual budget for general maintenance and this year we have

already spent in the region of £2,000 on works within the budget of £4,000.

Of course, we can only manage trees to the best of our ability, but unfortunately with the unpredictable weather we have been experiencing sometimes we do have incidents where trees or branches come down unexpectedly. In addition, when the survey is carried out the presence of further cavities and defects higher up the trees cannot be confirmed without climbing inspections being carried out on all trees, which is not viable.

Therefore, should you have any concerns about any trees or see any damage please do contact the Parish Clerk.



Sussex Flu Vaccination Update 22 October

Free flu vaccine protects during pregnancy

The local NHS is urging pregnant people to get their free flu jab now, as during pregnancy there is a higher chance of developing complications from flu and can include bronchitis, a chest infection that can become serious and develop into pneumonia.

The Influenza Virus can also impact on unborn babies being born prematurely, with a low birthweight, and even lead to stillbirth or death.

Studies have proven it's safe to have the flu vaccine during any stage of pregnancy, from the first few weeks up to the expected due date. Those who have had the flu vaccine while pregnant also pass some protection on to their babies, which lasts for the first few months of their lives.

The vaccine does not contain any live viruses, so it cannot cause flu. Some people may get a slightly raised temperature and aching muscles for a couple of days afterwards, and may feel some soreness where injected.

Those who had the flu vaccine last year, either because they were pregnant or were in a vulnerable group need to have it again this year - the viruses that cause flu change every year. This means the flu and the vaccine this year may be different from last year.

Allison Cannon, Chief Nurse Officer for Sussex NHS commissioners said:

"Flu can cause harm to both mother and baby. The free flu vaccine is the very best protection for you and your unborn baby from the harms of flu.

"However fit and healthy you might feel, if you are pregnant you need the flu vaccine now. The flu vaccine is the safest way to help protect you and your baby against the flu virus. It's free because you need it. Pregnant people can get their vaccine from their GP, pharmacist or through their maternity service."

"For any new mothers who are now in one of the eligible groups, please also make sure you receive the free flu jab this year. It is just as important now that your baby has arrived to protect you and it is safe if you are breastfeeding."

GP practices and pharmacies are receiving batches of the vaccine during the flu season, and flu vaccination clinics are scheduled to coincide with these deliveries. This does mean some may have to wait longer than they would wish to attend flu clinics ([leaflet on why people may have to wait longer](#)). The local NHS is reassuring those eligible there is plenty of time for everyone to book and get their flu jab.



DITCHLING CRICKET CLUB 2020 SEASON

This summer's cricket at the Club was at one point looking highly unlikely but once the powers that be had issued directives as to how matches could be played, we all leapt at the opportunity.

Following strict government guidelines our junior section had managed to take full pre-season advantage of our net facility which was used throughout every day for many months and proved extremely advantageous for their future performances - but more of that later.

Replacing the customary league matches, Sussex Cricket introduced an August Cup competition for both 1st and 2nd X1s and whilst we didn't manage to reach the playoffs both teams were only a fraction away.

Sunday cricket continued with the usual mix of fun especially introducing youngsters to senior cricket. The annual fixture against the RNVR was a particular success especially as this year saw the celebration of 70 years of this much-loved match.

Our annual cricket week was, for obvious reasons, played in a different format this year but with players arriving changed and supplying their own teas everyone had a great week of cricket the highlight of which was defeating the Royal Navy - a feat that had hitherto not been achieved.

The junior section of the Club is going from strength to strength as we now have teams from U 8 right up to U 16 encouraging a huge number of children from the village and surrounding areas to enjoy this great game.

Particular mention should be made of the U 13 side who entered a festival that included some 40 plus clubs across the whole of Sussex. They reached the final and in what was probably the most entertaining and exciting game seen for many a year, they carried off the trophy with a truly outstanding team performance against a much-fancied opposition.



All in all, despite the situation a vast number of players across the club managed to have an enjoyable and successful season.

If you are interested in joining the club please do get in touch - our aim is to provide cricket for all ages and abilities so don't be shy; get in touch, come along and enjoy some cricket at our beautiful ground. For further information please contact Patrick Nolan at patch@jpnfilms.co.uk.

Patrick Nolan
President, Ditchling Cricket Club

SPORTS GRANT

As with so many sporting events, the annual Ditchling, Streat and Westmeston Sports Day and Three Village Chase was unable to go ahead in the usual fashion. However, we were able to hold a 'virtual' Three Village Chase that involved competitors running the route on any day in May and recording their time on Strava. We would like to thank all the competitors for their enthusiasm and for their donations towards the NHS charities fund. The results can be found on the ditchling.com website.

In 2019 it was clear that the cups, some of them dating back to 1935, were in a state of disrepair and without attention would soon be useless. After a visit to Pruden and Smith, where Rebecca kindly sorted the cups into categories of repair, we applied to grants from the Parish Council and the Turner-Dumbrell Foundation.

We were delighted to receive grants from both these organisations and have since had the cup collection restored by a silversmith based in Hove. After the original lockdown

was lifted the cups were collected and now look fantastic, we are looking forward to being able to award them to new winners in 2021. We are so grateful to both the Parish Council and the Turner-Dumbrell Foundation for their generosity in helping us to restore the cups for future sporting generations of Ditchling, Streat and Westmeston.

The 2021 Ditchling, Streat and Westmeston Sports Day and Three Village Chase is due to be held on Sunday 2nd and Monday 3rd May, 2021.

NEWS FROM THE MID SUSSEX HEALTH CARE PATIENT PARTICIPATION GROUP (PPG)

The Patient Participation Group continues to work behind the scenes to help improve your health care service. Most recently we have helped with the annual flu clinics, that took quite a different approach this year, given the challenges of COVID-19 and the need to keep patients safe. We have heard very positive feedback from patients on the way it was managed. Do let us know if you have any feedback to add by emailing

midsussex.healthcareppg@gmail.com

On other health care services, there are various online options now for booking appointments online, seeing your medical history and even having online consultations. It can be a bit daunting and confusing, so if you need help with this, the PPG can help you. We do not have a dedicated phone number since we are a group of volunteers. If you cannot email us, do call the doctor's practice and provide your phone number so that we can contact you, **01273 834388**.



From the Mid Sussex Health Care Patient Participation Group

A message from our MP - Maria Caulfield



With the winter months looming, we still have the COVID crisis affecting us all. The Government has a difficult balance in terms of re-opening the economy while ensuring that as few people as possible catch the virus so that our NHS is not overwhelmed with admissions.

Since March efforts have been made to support those adversely affected by some of the measures introduced to protect us all. In the Lewes constituency, which includes towns such as Seaford, Newhaven, Polegate and Lewes itself, over 11,000 people were furloughed. Local businesses applied for £43 million of Bounce Back Loans and £13 million was paid out to support the self-employed just in this constituency alone.

Thankfully, we have low rates of the virus across Sussex and as a local MP I am working hard with all communities to help them reopen as safely as possible as we now move towards a degree of normality. Even those previously shielding can now return to normal if social distancing guidance is followed. While local lockdowns are in place in other parts of the country there are no plans for another national lockdown.

The current measures are subject to change but currently you can still go to work, school, hospital, church and university. You can still meet with your family and friends in groups of six and go shopping, to the pub and to restaurants.

Hospitals are also starting to return to offering routine treatments and when I now do shifts at my old hospital, I am giving chemotherapy instead of looking after COVID patients. I am also helping constituents who are patients with their COVID tests which they need before being admitted for their routine procedures. The NHS is open, and it is returning to business as usual.

While it is likely that we will need to continue with social distancing measures for the next few months, until a vaccine is available, I believe that we need to live with this virus and not be dominated by it. The Government will open up other parts of the economy as soon as it is safe to do so and will avoid a second national lockdown at all costs. I hope that with my next update we will be facing a brighter future and can put this year to bed. It has been a tough one for everyone, whether you got the virus, lost a loved one from it, lost your job or struggled to get through periods of isolation. This virus won't be with us forever and we need to support each other in the next few months until this crisis is finally over.

During lockdown we have generally seen a fall in crime with reduced numbers of violence and burglary. However, one area where we are seeing an increase is in rural crime which includes crimes affecting agricultural equipment, equine, wildlife and buildings. This means that in many of our villages in Sussex rural crime is a big issue.

Sussex Police have stepped up to the mark and in June launched a new rural crime team.

The team has been brought together to serve the rural community, to increase confidence and encourage reporting through preventing crime and carrying out more proactive investigations.

Made up of two sergeants, eight constables and six police community support officers

(PCSOs), they aim to make rural communities feel safer by building long-lasting partnerships, responding to the community's needs and providing an effective policing service. In turn, this work aims to increase confidence in the police in more isolated areas.

With 62% of Sussex's area dedicated to farming and a significant proportion being in the South Downs National Park, Sussex is defined as 'significantly rural' by DEFRA (2011). Recently, Sussex Police arrested three men near High Hurstwood, Wealden, on suspicion of burglary and going equipped for burglary. This is just one example of the force's approach to disrupting rural crime in the county.

I recently held a virtual meeting with local farmers and rural crime was high on their list of concerns with cases having increased during lockdown and the issue of trespass being significant.

I am hoping that the introduction of this new rural crime team will give residents living in our rural areas confidence that resources are going into making their communities safer. Do let me know if you have been affected by rural crime as I can be contacted on maria.caulfield.mp@parliament.uk

The BBC TV licence is proving to be a contentious issue in my post bag right now. It is full of letters and emails from people, young and old, who either feel that the BBC licence fee is no longer working for them, or from those who strongly feel it should stay. Many complain that they pay for other

subscription services, such as Netflix and Sky, and want to be able to pick and choose what they watch, rather than have a mandatory TV licence. Some tell me they no longer watch TV at all and just watch internet channels, like YouTube, and are having to pay for something they do not use, just because they have a TV set.

However, there are also those who are very happy to pay for the licence fee and are concerned over proposals to either scrap or change the fee system which could result in channels being lost or reduced. Having a service that is world renowned for its reporting and programmes is not something to take for granted and in many countries an independent national broadcaster would not be allowed.

The Government is therefore going to be looking at this in the coming weeks and months with a review of the licence fee itself but also reviewing decriminalising non-payment so that people can no longer be prosecuted for non-payment.

As there are such strong feelings on both sides of the argument I am keen to hear your views on this so please do fill in my survey online and let me know your views on the BBC. It will really help me in making sure I represent your views in Parliament.

<https://www.mariacaulfield.co.uk/BBCsurvey>

ALL CHANGE: HOW THE MID SUSSEX HEALTH CARE WILL DEAL WITH THIS YEAR'S FLU SEASON

Patients of Mid Sussex Health Care doctor's practice will be familiar with our annual flu vaccination programme where we facilitate large numbers of patients on a walk-in basis at Saturday morning and evening clinics across all three of our sites.

Due to COVID-19, we are having to change how we approach and manage this year's flu season. There will be no walk-in clinics this year, ALL vaccinations will be arranged by invitation only, issued via SMS, email, phone or letter. This will allocate a time, day and location for the vaccination. We are therefore asking that patients do not turn-up without having received an invite or try to book their own appointment.

Of course, all patients in the 'at risk' groups will be seen first. Those most at risk from the flu are also most vulnerable to COVID-19. The categories of high risk groups include:

- Pregnant women
- Ages 6 months to 65 years in clinical risk groups
- Diabetes
- COPD
- Learning disabilities
- Coronary Heart Disease
- Stroke and TIA
- Aged 65 and over
- Those in long-stay residential care homes
- Carers
- Immunocompromised patients and those living in the same house
- Health and social care staff employed by a residential care/nursing home, registered domiciliary care provider

So when is it going to take place?

From the end of September, running through until November, there will be a mix of evening, weekday, morning and afternoon clinics as well as weekend clinics. There will also be

separate clinics for children. Where possible, patients will have appointments at the surgery they are registered with. We respectfully ask that patients don't call the practice to try and book an appointment for a flu vaccine, as this will impact patients trying to book urgent and routine appointments.

What about the 50-65 age group?

The Government has advised that the flu vaccination will be rolled out to patients aged 50 – 64 years this year due to the COVID pandemic, to try and ease pressure on the NHS during the winter season. Any patients within this bracket who are in at risk groups will be invited to attend for vaccination during our first run of clinics.

Once we have safely completed our at risk categories, **SUBJECT TO BEING ABLE TO ACQUIRE NEW VACCINES** – we will start inviting the new cohort of patients.

We hope this is helpful information and will reassure you that your Health Care Practice has plans in place to help protect the community from the Flu and COVID-19 in the best way we can.



Public Health
England

NHS

flu: 5 reasons to vaccinate your child



1. Protect your child. The vaccine will help protect your child against flu and serious complications such as bronchitis and pneumonia

2. Protect you, your family and friends. Vaccinating your child will help protect more vulnerable family and friends

3. No injection needed. The nasal spray is painless and easy to have

4. It's better than having flu. The nasal spray helps protect against flu, has been given to millions of children worldwide and has an excellent safety record

5. Avoid costs. If your child gets flu, you may have to take time off work or arrange alternative childcare

What should I do?

Contact your child's GP if your child was aged two or three years old (on the 31 August of the current flu season) and you haven't heard from them by early November.

If your child is at primary school or in year 7 of secondary school, the school will send you a leaflet and consent form. Please sign the form and return it.

If your child has a health condition that puts them at greater risk from flu, or lives with someone on the NHS Shielded Patient List, they can get the flu vaccine from their GP.

For more information visit www.nhs.uk/child-flu

HELP US
HELP YOU
PROTECT AGAINST FLU

Flu **i**mmunisation
Helping to protect children,
every winter

Ditchling Pavilion Sports Club



Like so many sports and hall facilities the Pavilion has not escaped the impact of the pandemic and was closed for a number of months.

However, it was great to see the Cricket Club play some competitive cricket in a shortened season and Sussex Pilates return. A number of our groups have yet to restart but we have been delighted to welcome Karen Thomas and her Slimming World group on a Thursday. The committee would like to thank the Hairy Dog Brewery for all their help in running a Covid-19 compliant bar during the reduced cricket season and their very generous pricing support! The committee are very keen to continue the programme of works to improve the facilities and encourage more of the community to use the Pavilion and the recreation ground. We have some way to go before we achieve this but the work completed so far includes:

- Installation of new heating system
- Building of new veranda facing the cricket pitch
- New air-conditioning system for cellar
- Fitting of x2 500l water cylinders
- Fitting of outdoor solar lighting

We have recently received grants and donations from the Ditchling Ball, Ditchling Parish Council and The Turner-Dumbrell Foundation and these funds will be used towards the following planned works:

- Ladies toilets to be reconfigured to provide a 3rd Ladies WC and to be fully refurbished
- Scorebox and storerooms to be improved to provide secure storage
- Replacement of external cladding and windows
- Redecoration of the main hall
- Redecoration of the changing rooms
- New decking to be built facing the football pitch

The committee will need to raise further funds to bring these plans to fruition but will be working towards a December 2022 completion date.

Looking to the next 12 months or so, we are hoping to welcome back our table tennis and archery clubs and also hope Ditchling Football Club will be able to return in the not too distant future. In 2021 we are also looking forward to hosting the Ditchling Ball on 12th June, the Puncture cycling event 25th April and the Ditchling, Streat and Westmeston sports day – date to be confirmed. Hopefully the next cricket season will be a full one with the club continuing to increase membership and the Juniors their success!

We currently have a number of hire options available and would be very keen to support a new sports club or activity that is looking to start. For hire details, please contact Sean Guirey - ditchlingpav@gmail.com

We will be looking to enhance the committee during 2021 and we would welcome hearing from anybody who may wish to become a committee member. We will shortly be sending details of the proposed AGM.

We are also looking for a volunteer who could help as a Caretaker/building co-ordinator.

The role would primarily consist of basic maintenance of the facilities, ensuring supplies are maintained at suitable levels and assisting hirers as required.



Keeping safe from coronavirus – a job for East Sussex together

By Darrell Gale, Director of Public Health for East Sussex

It's my job to try and ensure as few of us as possible in East Sussex get infected with COVID-19 – but I need your help.

The good news is that, at the moment, East Sussex has low rates of the virus compared to some other parts of England.

But, of course, the virus is still there in our communities.

If there were a local outbreak, I or other public health leaders might ask you to avoid certain places or even to stay at home, as the situation is controlled.

We'd let you know about this very swiftly, for example on local television, radio and online. You can also sign up now for email updates which we'd send if anything new happens. (You'll find a "keep me posted" link on the homepage of the East Sussex County Council website, eastsussex.gov.uk)

Of course, I hope this will never be necessary and we can all work together to avoid outbreaks.

Above all, please:

- Keep 2 metres apart from other people wherever you can
- regularly wash your hands
- wear a facemask in shops and other enclosed public places
- if you feel at all unwell (a new persistent cough, a change in smell or taste, or a raised temperature) immediately book a test and stay at home for at least 10 days. Book a test online at nhs.uk or call 119 if you have trouble using the internet
- If you are asked to self-isolate by the NHS test and trace team, please do.

On the county council website you'll also find latest details about the number of cases where you live, our plan for how we'd handle any outbreak in the county and lots of practical help and support.

Our communities have already done amazing work to support each other through these tough times. We can keep the virus at bay in East Sussex if we continue working together.





TREE CARE & LANDSCAPING



Tree Care Fencing
Landscaping
Stump Removal Logs

07894 291713
www.jbtreecaresussex.co.uk



At the heart of your Care

Are your values our values?

RESPECTFUL, RELIABLE, PATIENT & PRACTICAL...

A career in care could be perfect for you!

JOIN OUR TEAM TODAY!

RECRUITING NOW IN BURGESS HILL & SURROUNDING AREAS

PROVIDING QUALITY CARE IN YOUR OWN HOME

Coastal Homecare offer a range of home care, personal care and social care services to meet each client's individual needs.

Call us to arrange an assessment today.



Call: 01444 645 030 • info@coastalhomecare.co.uk • www.coastalhomecare.co.uk