

Edition 6 • Quarterly



February 2019

DITCHLING

PARISH COUNCIL MAGAZINE



NEWS AND EVENTS FROM YOUR PARISH COUNCIL



Lancing College

Preparatory Schools, Senior School & Sixth Form

Be inspired Be brilliant Be you

Lancing College

Lancing
West Sussex BN15 0RW

T 01273 465 805

E admissions@lancing.org.uk

Lancing Prep Hove

The Droveaway, Hove
East Sussex BN3 6LU

T 01273 503 452

E LPHadmissions@lancing.org.uk

Lancing Prep Worthing

Broadwater Road, Worthing
West Sussex BN14 8HU

T 01903 201 123

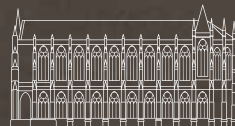
E LPWadmissions@lancing.org.uk

FIND OUT MORE
LANCINGCOLLEGE.CO.UK

Registered Charities

Lancing College & Lancing Prep Hove 1076483, Lancing Prep Worthing 1155150

**YOUR
INCREDIBLE
JOURNEY**



WELCOME TO THE

DITCHLING PARISH COUNCIL MAGAZINE



New Community Car Park, Keymer Road, SDNP/17/01358

The Ditchling Street and Westmeston Neighbourhood Plan voted on in November 2017 reflected upon the following statistic extracted from the result of the neighbourhood plan survey carried out in 2013.

"84% of residents feel that more off-street parking is needed for residents and visitors in the village."

As a result of this, the council has tried for some time to find a suitable site for extra parking within the village. This has now been completed by the purchase of a small field in Keymer road, with the intention of providing parking for 30 to 40 cars plus some bicycle parking. The cost of the purchase was £25,000, and was enabled by planning permission granted by the South Downs National Park in September 2017.

The positioning of this site close to the war memorial will be of particular use to visitors to the church and the museum, with the pavement being widened to permit easier wheel chair access. For safety reasons all of the work will require a reduction to the speed limit in Keymer Road just before the new car park entrance. While that work is being carried out, the council will begin the process of opening up the car park entrance and providing soft landscaping. Then an unobtrusive membrane similar to that at the Keymer Garden Centre will then be laid on

CONTENTS

New Community Car Park	3
Ridgeview Crowned Winemaker of Year	6
Clerk's Corner: An Introduction	8
The Ditchling Players	10
Recreation Ground existing uses & site layout	12
Make a change, become a Local Councillor!	14
1st Ditchling Scout Group	15
2019-20 Budget Plans	16
Ditchling History Project	19
Ditchling Charity Ball	22
Traffic in Beacon Villages	24
Neighbourhood Plan Challenges	28
Action for Deafness	30
Classic & Vintage Tractors	32
Ditchling (St Margaret's) CE Primary and Nursery School	32
The Windmills Junior School Governing Board Vacancy	33
The Beacon Parish Annual Report	34
Stunning new Winter Garden for Wakehurst	36
Report it to sort it: Neighbourhood First	38

Cover photo credit: (Oliver Waring)

This magazine has been produced at no cost to the Parish Council.

Broadbridges Mens & Boyswear



Menswear
Formal & Casuals
Morning & Evening Hire

01444 413466

www.broadbridges.co.uk

2 Sussex Road, Haywards Heath, West Sussex

Let's go swimming!

Angela's Swim School

SWIM TO WIN AT LIFE

Life-changing. Life-enhancing
Swimming Lessons for ALL ages

eastsussex@anglasswimschool.co.uk · 07985 514000

A.A. Eddy & Son
(Southern)
FRENCH POLISHERS

TRADITIONAL & MODERN FINISHES

SPRAY LACQUERING • ANTIQUE RESTORATION

ALL CLASSES OF WOOD REPAIRS

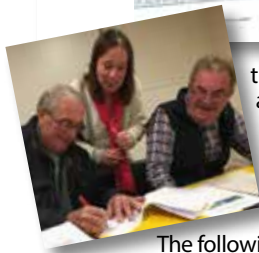
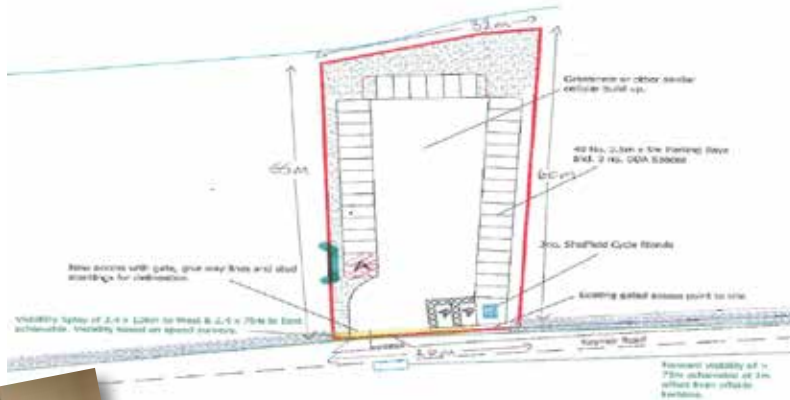
LEATHER DESK TOP • CHANGE OF COLOUR

DOMESTIC & COMMERCIAL

FREE LOCAL ESTIMATES

MARK EDDY - 07813600579 * OFFICE (BRIGHTON) - 01273 046507
Wivelsden Farm, North Common Rd, N. Chailley, E. Sussex, BN8 4EH
mark@aaeddyandson.com * www.aaeddyandson.com

◀ New Community Car Park Plan below:



the surface of the field, to allow for the safe parking of vehicles. It is hoped that the parking facility in some form will be available during 2019.

The following photo shows Don McBeth, the Chair of the parish council, signing the legal document to complete the purchase. We last reported in November 2017 that a change of use application for an agricultural field to be used as a 40-space public car park, at Keymer Road, had been approved by the South Downs National Park Authority (SDNPA). We hoped to have an update on when residents could expect to see work commence on site many months ago but unfortunately securing the land has been a protracted process.

The Parish Council and the landowner agreed heads of terms before the planning application was submitted. Once permission had been granted it was discovered that an overage clause existing requiring permission from a former holder of the land. There were no contact details for the former owner, who may not have been living. The overage clause, fortuitously expired in January 2018. Draft documentation was issued by the solicitor acting for the Parish Council and once we reached February 2018, the Council were hopeful that contracts could be agreed. A rather prolonged process ensued with the Council agreeing to purchase the land for £25,000 rather than lease the land for 50 years as previously agreed. Unfortunately, the other parties' solicitor did not seem able to respond to correspondence and this delayed matters further.

As a result of negotiations with the landowner the access gate to the adjoining land was relocated in the car park, resulting in some reorganising of parking spaces, although the total number remains at 40 spaces.

By October 2018 the contract of sale had been agreed by both parties and the Council's solicitor had been holding funds ready to complete for several months. The purchase of land by the Council eventually completed on 7th December 2018.

The next steps are to formally agree the new car park layout with the SDNPA, who have been involved in the process over the past year and so we do not expect this to be onerous. Then the council will enter into section 106 legal agreements with the SDNPA with the approval of East Sussex County Council Highways to agree to provide the new footpath specified in the planning conditions and to make a contribution of £5,000 to extend the 30-mph zone on Keymer Road to include the new entrance to the site.

It is expected that suitably qualified surveyors will be appointed in early 2019, they will oversee the tendering process with contractors and project manage the construction of the car park. The Parish Council will ensure that they have funding in place by applying for a loan from the Public Works Loan Board.

Initial discussions with surveyors suggest that the works themselves would take approximately 4 months to complete. We will provide a further update in our May edition.



Get creative...

bespoke jewellery
as unique as you are

Bring along your idea, even the materials from your old jewellery, to a free one-hour design appointment to start your journey. P&S combine great design with traditional craftsmanship and cutting-edge technology to create jewellery uniquely for you. The gallery shows their distinctive designs to inspire you to purchase or commission your precious legacy piece. Call to book, drop in or come for a tour of the workshops... What will you design?

PRUDEN & SMITH 2 SOUTH STREET DITCHLING BN6 8UQ 01273 846338 WWW.PRUDENANDSMITH.COM

JEWELLERY DESIGN & REMAKING GALLERY INFO@PRUDENANDSMITH.COM

BOOK A FREE DESIGN CONSULTATION AND WORKSHOP TOUR



COASTAL HOMECARE

We care, because you care

Coastal Homecare offer a range of home care services to meet everyone's individual needs; Personal Care, Home Care and Social Care

Tel: 01444 645 030

RECRUITING NOW!

Full & Part-Time CARE STAFF REQUIRED in DITCHLING, WIVELSFIELD GREEN and CHAILEY to provide quality care and support to our customers living in their own homes.



Ridgeview Crowned Winemaker of Year in the International Wine & Spirit Competition

Ditchling's Ridgeview Vineyard was delighted to have been awarded the coveted trophy of Winemaker of the Year in the prestigious International Wine & Spirit Competition 2018.

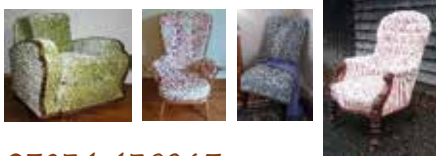
This is the first time in the IWSC's 49-year history that this has been presented to an English producer. The IWSC attracts entries from over 90 countries and is seen as a benchmark for quality with over 400 global experts assisting with the judging. The award was announced at the Guildhall in London with guests gathered from the global wine world.

CEO Tamara Roberts commented; 'It is difficult to comprehend the enormity of this award to Ridgeview and the family. Being the first English sparkling wine producer to win such a coveted trophy from the 'Oscars' of the wine world is a huge achievement'.



This award has topped off a great year for Ridgeview with the 2018 vintage, the biggest and best harvest on record which is due to be released in Ridgeview's 25th anniversary celebration year in 2020.

B Upholstery



07834 439267
www.kbupholstery.co.uk
kate.kbupholstery@gmail.com

AERIALBEAM

A Name You Can Trust

TEL: 01444 24 23 24

Services Include

- TV's on wall
- Freesat/Freeview HD and recordable systems
- Upgrade dish systems and extra cable runs
- Freeview, FM, DAB Aerials and extra points
- Wifi solutions, Network cabling



www.aerialbeam.co.uk

S. LEWIS

PROPERTY SERVICES LTD

All Aspects of Security Work Undertaken
Commercial & Domestic
Carpentry • Building • Plumbing • Electrical
Woodworm & Dry Rot

Steve: 07885 763 409 Paul: 07738 569 911

Tel: 01444 236 510



Checkatrade.com
where reputation matters

ELECSA

steve@lewispropertyservices.co.uk



ODD JOB MAN

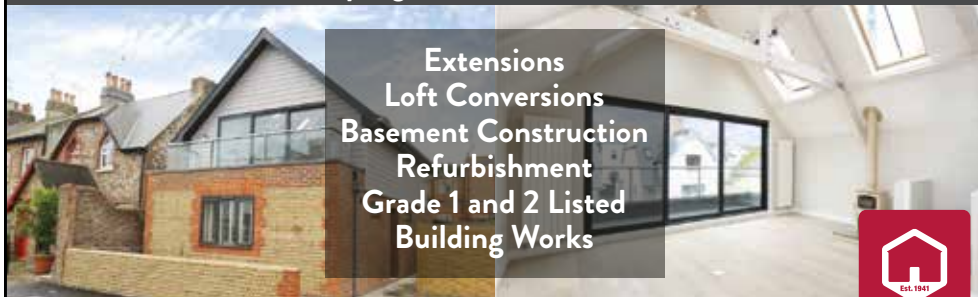
NO JOB TOO SMALL.
EVER NEEDED A SHELF PUT
UP OR A CURTAIN HUNG,
EVEN A CUPBOARD DOOR
FIXED OR A GARDEN
SMARTENED UP

FAIR AND REASONABLE RATES
FRIENDLY AND EXPERIENCED SERVICE
PLEASE CALL FOR A QUOTE

ANDY- 07769 683674



Delivering a **first class finish** to every project with the very highest **attention to detail**



Extensions
Loft Conversions
Basement Construction
Refurbishment
Grade 1 and 2 Listed
Building Works



Respectful, polite, highly professional, efficient and always meeting deadlines.

GET IN TOUCH TODAY for a **FREE** no obligation estimate

Office: **07885 325 954** info@braidenconstruction.co.uk www.braidenconstruction.co.uk



Fruit and veg boxes delivered direct to your door!

Our medium box contains: Generous portions of potatoes, carrots and onions. PLUS 5 seasonal veg and 14 portions of fruit! Plenty for two people for one week.

New Year... Healthy Start!



2+1 FREE

Order two fruit & veg boxes during Jan, Feb or March and receive your third box...

Order online: www.ashareofthecrop.co.uk
Or by phone: 01273 358468

FOR ALL YOUR GLASS REQUIREMENTS

**HAYWARDS HEATH
GLASS
&
GLAZING**

Open Weekdays 8am. – 5pm.
Saturdays 8am. – 12.30pm.

**McDOUGAL ROSE YARD
22, GOWER ROAD
(GOOD PARKING FACILITIES)**

Tel: 01444 440119

Fax: 01444 440092

E-mail: info@sussexglassandglazing.co.uk



An Introduction

I would like to introduce myself as the newly appointed Parish Clerk & RFO of Ditchling Parish Council. I would like to thank the Parish Councillors for giving me the opportunity to take on this role and I am very much looking forward to working together with Councillors, Derek and the residents of Ditchling.

I have been fortunate to live in the small village of Ansty in West Sussex most of my life, and therefore have a good understanding of village issues, having been a member of the Village Hall Trust and helped with community events such as Summer Fete's, Children's Parties and Diamond Jubilee celebrations in the past.

I live with my husband, two children and our springer spaniel, Tilly. Our daughter is in her first year of college and our son is at secondary school; both love sport, including cross country running, cricket and hockey. As a family we are all great supporters of all sport and how it has such a positive effect on all ages, both socially and of course physically and mentally. My husband is very involved in Ansty Cricket Club and helps coach and run the U8's cricket team. So, our summer evenings and weekends are spent watching cricket games on a very regular basis, which is a very enjoyable way to spend an evening, especially if all summers were like last season! I was also a member of the Ansty Stoolball team for several years, but unfortunately due to declining members the team had to withdraw from the league.

With regards to my experience as a Parish Clerk I have been Clerk to Ardingly Parish Council for the past five and a half years and gained my CiLCA (Certificate in Local Council Administration) qualification in July 2017. I really enjoy the role of Parish Clerk, as it is such a varied job and I look forward to getting to know Ditchling village over the next few months. I am of course aware that it is set in such a beautiful part of Sussex and when I was a child, I remember enjoying visits to my Great Aunt who lived in Ditchling High Street.

I would like to take this opportunity to thank Michelle Warner for her assistance in handing over the job and wish her all the best for the future.

I will officially commence my position from the 7th January 2019 and I look forward to meeting you at the Parish Surgery.

Sarah Mamoany

HAVE YOUR SAY

We relies on the community of Ditchling to provide articles for publication.

We now have several societies and groups making regular contributions and keeping everyone up-to-date with their activities, we hope that you enjoy reading about them.

The Ditchling Village Association Guide lists thirty-two separate clubs, societies and groups, operating within Ditchling – and we are sure that others in the community would enjoy learning more about these organisations, if you are seeking new members or fundraising then what better advertising?

If you are holding a festive event we would love to include the details in the next publication.

You do not need to be a part of a formal group to submit an article, we welcome contributions from individuals too.

We recommend that an article should be approx. 500 words long plus one picture or 400 words with two pictures.

Magazine delivery dates:

Early May - deadline for submitting articles
25 March

Email: clerk@ditchling-pc.gov.uk

Write to:

Ditchling Parish Office, Ditchling Village Hall
Lewes Road, Ditchling, BN6 8TT



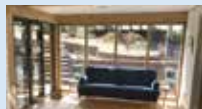
Woodstock Construction

Woodstock Construction

Family run business with over
30 years' experience

Some of the works we carry out include:

- Extensions
- Loft Conversions
- Painting & Decorating
- Kitchens
- Bathrooms
- Bespoke Joinery
- Flat Roofing - all types
- Pitched Slate Roofing
- General Building



Providing a personable,
friendly service
Contact us today:

t: 01273 891572 m: 07961 123054

email: office@woodstockconstruction.co.uk

FREE Estimates with
No Obligation

www.hassockscommunitycyclehire.com

CYCLE HIRE AND SERVICING HASSOCKS STATION



Bike servicing (Sats 10-1)
Get your bike ready for 2019
visithassocksbikes@gmail.com

Mountain bike hire
07521 961909



RELIABLE & DEPENDABLE CARE GARAGE SERVICES

- ✓ Car Service
- ✓ Car MOT's
- ✓ Care Tyres
- ✓ Car Exhaust
- ✓ Car Brakes

Opening Hours

Monday-Friday 08:30 to 18:00
Sunday-08:30 to 13:00

Unit 12-13 Sheddingdean Business Centre,
Merchants Way Burgess Hill, RH15 8QY
Phone: **01444 480606**
info@ellismotors.co.uk



PROMEDICA24
Live-in companionship & care



24/7 live-in care & companionship in the comfort of your own home

Our round the clock live-in companionship
& care packages start from £695 per week



Please call Lesley on **01273 257 465** or **07388 326 686**
or visit www.promedica24.co.uk/brighton



Landscape Gardeners

- Garden design & waterscapes
- Hard & soft landscapes
- Paving & driveways
- Decking & fencing
- Pond maintenance
- Planting & tree work

For friendly advice and a
free quote, please contact:

01273 843283

Web: www.standens.net
Email: info@standens.net



Checkatrade.com
where reputation matters

The Ditchling Players



When going around Ditchling you may have spotted posters advertising plays performed by the Ditchling Players and, for those of you not familiar with the Players, I'd like to introduce ourselves.

We can trace our roots back to between the Wars when there was a very active drama group in Ditchling. In the museum there's a woodcut design by Eric Gill for the Ditchling Dramatic Club, dated 1923, which was inspired by Amy Sawyer, who lived in the village. As well as being a renowned artist she also wrote whimsical plays about Sussex village types which were published in 1934 in a book 'Sussex Village Plays', which was dedicated to the Ditchling Village Players.

The Second World War put an end to the group but in January 1945, a meeting was held at the Old Meeting House with the purpose of reviving the Players. It was felt, however, that the name Village Players was too restrictive and so the Ditchling Players was born. One of the original committee members, the late

Leon Sinden, became one of our patrons and his sister, Joy, both acted and produced for the Players right up to her death in 1993.

Over the years the Players went from strength to strength and had considerable input into the Ditchling Pageant, which was held every ten years up until 1981. Grace Denman provided the artistic inspiration for this event as she did in many of our productions including 'Alice through the Looking Glass'. This 1969 production was adapted by our late President Pamela Grieve with music written by John Ferdinando and Peter Howells. It was also a success for Martha Kearney, now the BBC's political correspondent, who played Alice.

In 1972 the Ditchling Village Hall, where our productions are now staged, was rebuilt and we were able to co-operate with the architect to ensure that we have one of the best amateur stages in the district.

1999 saw the return of pantomime to Ditchling for the first time in a number of years and since



then we have continued to diversify with not only plays; musicals and pantomimes, but also Murder Mystery Evenings and other social events for our members. We have also been involved in raising money for local charities by holding events at St George's Retirement Village and Danny House, Hurstpierpoint.

Like all Amateur Dramatic groups in the area we pride ourselves in a high standard in all our productions as well as being a friendly group, so anyone joining the Players can be sure of a warm welcome.

Following our successful production of Agatha Christie's 'And then there were None' in November 2018, our next production will be 'How the Other Half Loves' by Alan Ayckbourn (15th to 18th May), and we look forward to seeing you in the audience.

For more information about this and membership of the Players visit our website at www.ditchlingplayers.org.uk

PAY LESS TAX

Formerly with the world's largest accountancy firm for many years, I am now available freelance to deal with all tax and accountancy matters, at a fraction of company rates.

Contact Lawrence Flowers
for a free consultation at your address

01273 891505 lawrie8f@aol.com

Brighton Piano Warehouse

The Lowest Prices in the South

- New & Second-hand Pianos
- Grand & Upright Pianos
- Digital Pianos
- Covers, Stools & Accessories
- Pianos Wanted – Best Prices Paid
- Concert Hire
- Piano Removals



Free Local
Delivery &
First Tune

01273 601 989

www.brightonpianowarehouse.co.uk
43-45 Bonchurch Road, Brighton, BN2 3PJ



SUSSEX
PROFESSIONAL
SERVICES Tel No. 01273 569120
Mob. 07704 973357
info@sussexprofessionalservices.co.uk

We are a friendly and local firm with over 20 years' experience, providing all the accounting and tax support your business needs.

Offering competitive rates:

- Personal tax returns
- Business accounts
- VAT returns
- Payroll

(including auto enrolment processing and CIS Returns)

Other services include:

- Bookkeeping
- Business start up and registration
- Accounts software installation
- Excel training and support.

Contact us now for a free initial consultation.



J4CAMPERS

Hire for a great camping experience
Try before buying or converting
Have your dream camper built for you

Web: www.j4campers.co.uk
T: 01273 921159 M: 07933 655798
E: j4campers@gmail.com
Unit 10A&B Firslan Park Estate,
Henfield Road, Albourne, BN6 9JJ



Recreation Ground existing uses & site layout





DITCHLING VILLAGE HALL ARE LOOKING FOR A **VOLUNTARY BOOKINGS COORDINATOR** TO JOIN THE TEAM

About the role:

- ⇒ Respond to queries regarding booking the hall
- ⇒ Maintain the database of hirers
- ⇒ Produce and email booking forms to hirers
- ⇒ Produce weekly schedules of confirmed bookings for display at hall and post office and to email to Trustees and Caretaker
- ⇒ Produce monthly invoices and email to hirers and treasurer
- ⇒ Liaise with the hall care taker to arrange visits for prospective hirers
- ⇒ Attend 2-3 committee meetings annually
- ⇒ Check notice boards at the hall and remove out of date notices
- ⇒ Full training will be provided to use the easy to use bookings software which holds and produces forms, invoices etc
- ⇒ Approx. 5-6hrs per week

Essential member of the Hall team making a real contribution to the Village

Please email info@ditchlingvillagehall.uk explaining your suitability to the role

**AMS**
PROPERTY
SERVICES

PRO
PLASTICS

ALL YOUR PROPERTY NEEDS

Fascias • Windows • Doors
Gutter Clearance • CCTV Gutter Maintenance

07702 854373 01273 400162
www.ams-property-services.com

Do you need a local, reliable electrician?

- Extra Points/Sockets
- LED Lighting
- Garden Lighting
- New Installations
- Rewires
- Fuse Board Upgrades
- Testing and Inspection
- Qualified Electrician
- Fully Insured
- Free Quotations
- Reliable Service
- Tidy Work
- Competitively priced

I assure you of a quick response and a competitively priced service

BELGRAVE
ELECTRICAL
SERVICES LIMITED

Call Keith on 07973 631 244 / 01444 471921
Visit: www.belgraveelectrical.co.uk

**John Wadham**
Electrical Services

Mob: 07973 803687

Paul Fuller
Painting & Decorating

Internal & External
Over 35 Years' Experience
Fully Insured

07971 631157
pfuller.decorating@hotmail.com

Make a change, become a Local Councillor!

Ditchling Parish Council is calling on residents, passionate about their community to stand in the local elections to be held on 2nd May, 2019.

What do councillors do?

Councillors are the champions of their community and give residents a voice on the decisions the council makes. Becoming a councillor will allow you to make a real difference in your community by engaging with residents, local groups and businesses to find out their needs; making decisions on which services and projects the council should take forward; and getting involved locally to ensure the services are meeting your community's needs.

How long does it take?

The National Association of Local Councils (NALC) Local Councillor Census Survey found that councillors put aside, on average, three hours a week for council work. This often includes attending meetings, engaging with residents and speaking on behalf of the council to other bodies.

Can I stand?

There are only a few rules to stand for election. You must be:

- A British citizen, or a citizen of the Commonwealth, or the European Union
- 18 years of age or older
- Live in an area that is served by a local council

How can I get involved?

Contact parishoffice@ditchling-pc.gov.uk to find out more or visit www.nalc.gov.uk/elections

Due to the number of nominations that are likely to have to be processed in Lewes District, it has been decided that the Notice of Election for Lewes will be published on Monday 18th March 2019. It will be on the Council's website by 4pm on Monday 18 March 2019. A copy will be sent to Clerks at the same time. Purdah will commence from this date.

Accordingly, submission of nomination papers will commence on Tuesday 19th March and close at 4pm, Wednesday 3rd April 2019. This is providing an extra 5 working days for the team to check nominations. A nomination paper requires two sponsors; in the case of Ditchling

there are eleven vacancies to be filled from existing Councillors wishing to be re-elected and/or new applicants. In the event of more than eleven applicants, there would need to be an election.

- Please call 01273 471600 to secure an appointment to submit completed nomination forms.
- An Agents and Candidates briefing session has been planned for Tuesday 12 March 17:00-18:00, at the Lewes District Council Offices, Southover House, Southover Road, Lewes BN7 1AB.
- We would ask that you do not submit nominations close to the deadline as errors can make them invalid with no time for issues to be resolved.

The count will take place on Friday 3 May 2019 at the Falmer Community Stadium.



To advertise please call
01843 269513

1st Ditchling Scout Group

It has been a busy term for the Scout Group.



The young people have been enjoying many exciting activities including kayaking, geocaching, night hikes, night games and the Beavers had a trip to the Shoreham Beach for a scavenger hunt.



The Beavers and Cubs enjoyed a visit to Ditchling Orchard and the Beavers ran a stall on Ditchling Apple Day The Cub and Scouts enjoyed a joint visit to the Observatory at

Herstmonceux. Other activities have included Talent nights for each section.

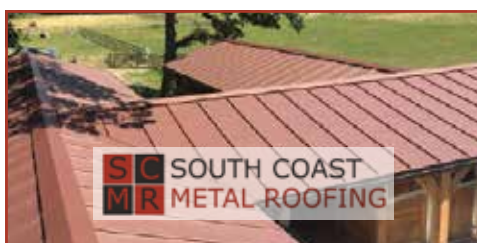
All sections worked on a special Poppy badge to mark the 100th Anniversary of the end of WW1. Thanks must go to The Ditchling history project and Margaret Bovill from the Ditchling RBL who were so helpful giving up their time to

come and talk to the young people. Also, one of the scout's dad who is a WW2 researcher came along with some memorabilia to show the Scouts.



I think you'll agree the young people did those that have fallen proud on Remembrance Day and turned out in force to show their respects. A very important piece of news I must mention is we are very short of uniformed Leaders at present and as a result of which we will not be able to take any new children into any of the sections until the issue is resolved so if you think you or someone you know would enjoy enabling the young people to continue to having fun doing great activities please get in touch with me , Sue Waring, at swaring001@gmail.com.

Thank you



We are specialists in roofing and cladding. Working with a range of metals, we offer a bespoke service for both traditional and contemporary dwellings.

Metal roofs are durable, low maintenance and eco-friendly.

View our website to see our range of services or contact us to find out more.



Free Consultation & Quote
Premium Quality Materials • Full Range of Specialist Services

01273 563 553
info@southcoastmetalroofing.com
www.southcoastmetalroofing.com

"I FEEL AMAZING, LIGHT AND FULL OF HAPPINESS!"

Same before
Same now

3 LBS
LOST

Millions of people around the world have lost weight with Cambridge Weight Plan and changed their lives. Don't delay start today!

Get in touch:
John Williams
Home: 01273 706641
Mobile: 07504 413985
john.j.williams93@gmail.com
www.cambridgeweightplan.com/johnW

Cambridge
Weight Plan
Independent Consultant

*The weight lost and the time taken are particular to this client. Everyone's weight loss journey is unique to them.

2019-20 Budget Plans

The Parish Council agreed the Budget for 2019/20 at the Council meeting of 17 December 2018, this forms the basis of the precept, or the amount of council tax due to the Council. The amount requested for the year commencing 1 April 2019 is £85,978. (2018 £83,695)

This represents an increase of 2.73% or £2,283 on the current year. A council tax payer in a band D property in Ditchling will be paying £75.21 per year for services provided by the Parish Council. Looking at the other 28 Parishes in the Lewes area council tax is highest in Lewes at £168 for a band D property and lowest in Falmer at £7. Ditchling sits at 17th almost in the middle with Hamsey at 16th and Wivelsfield at 18th.

Other income is limited, the main sources are CIL or Community Infrastructure Levy and are due to the council where new homes are constructed or where extensions exceeding 100 sq. metres are built. The Council has received CIL monies to- date from a new property built at Janes Lane and will receive further CIL monies from the development at the former Royal Oak Pub – now called Pepper Close. Sports clubs pay an annual rental to use specific areas of the Recreation Ground and Burial Ground charges for interments are also a source of limited income.

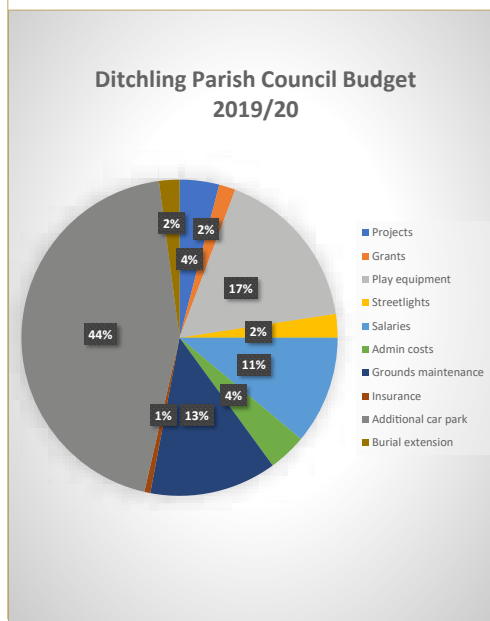
We forecast exceptionally high expenditure in the current year, expecting construction of the new car park in Keymer Road to commence and works to upgrade the recreation ground to also begin. Work did take place to clear the field next to the Burial Ground in preparation for an extension to this area and further work is now required.

Amounts budgeted in 2018/19 that will now move into the following financial year are; £50,000 towards new equipment at the recreation ground playground, excluding grants and £125,000 for the costs and fees involved in constructing a new car park at Keymer Road. The council is planning to spend significantly more than the precept received,

the shortfall will be made up by drawing funds from reserves and talking out a loan from the Public Works Loan Board.

Other significant costs include the salary costs of the Clerk and Deputy Clerk, the proper officers of the council. Ground maintenance at the Burial Ground, Recreation Ground, War Memorial and The Drove are expected be £38,550. This includes emptying of bins including dog poo bins, grass cutting, hedge cutting, tree maintenance, bench maintenance, fencing and repairs to parking areas plus rolling, sanding, harrowing, fertilising and line marking at the football pitch.

The full budget can be found on the Parish Council website www.ditchlingpc.org.uk/. A summary of the main expenditure headings is show below:



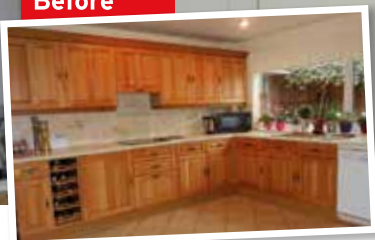
QUALITY KITCHEN MAKEOVERS

by simply replacing the doors and worktops

From the UK's #1
kitchen makeover experts.
Visit our showroom now



Before



- FROM SIMPLE DOOR REPLACEMENTS TO COMPLETE FITTED KITCHENS
- FULLY INSTALLED BY LOCAL PROFESSIONALS IN JUST A FEW DAYS
- CHOOSE FROM A LARGE SELECTION OF DOORS, WORKTOPS AND APPLIANCES
- 84 SHOWROOMS NATIONWIDE

Est. 1999

DO YOU DREAM OF A NEW KITCHEN?



Proud members of
9.7/10 Checkatrade.com
Where reputation matters

See what our customers have to say

DREAM DOORS®

NEW LIFE FOR OLD KITCHENS

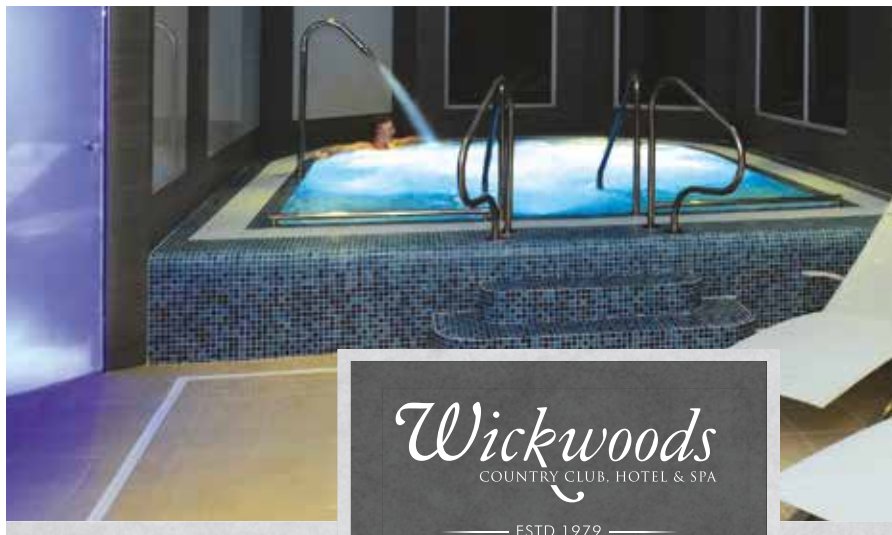
www.dreamdoors.co.uk

CALL US NOW FOR A FREE ESTIMATE:

01273 415141

VISIT OUR SHOWROOM:

50 Boundary Road,
Hove, BN3 4EF



IMPROVE YOUR LIFESTYLE IN 2019

Achieve an improved lifestyle with an affordable & unrivalled Club Membership

The spa, hotel stays & dining at The Glass House Restaurant is available to non-members



Join as a Club Member and receive:

- Unlimited facility use
- Free gym induction & programme
- Free tennis coaching session
- Guest passes
- Includes 84 exercise classes a week
- Discounts in the bar & restaurant
- Kick-starter kit
- Regular reviews & follow-ups
- Discounts on spa treatments

See Wickwoods.co.uk or call 01273 857567

Member Irving S. "Excellent gym and health club with top facilities and friendly helpful staff" ★★★★★

Sue B. "The food is superb, the gardens and setting stunning, wonderful massage and facial included!" ★★★★★

GYM CLASSES SAUNA & STEAM INDOOR TENNIS SWIMMING SPA & TREATMENTS DINING & EVENTS & MORE

T&C's Apply. Offer subject to availability, management reserves the right to withdraw or amend the offer at any time. Other T&C's apply, please contact Wickwoods.



01273 857567  Wickwoods.co.uk

Wickwoods, Shaves Wood Lane, Albourne, West Sussex BN6 9DY



The Ditchling Players

When going around Ditchling you may have spotted posters advertising plays performed by the Ditchling Players and, for those of you not familiar with the Players, I'd like to

introduce ourselves.

We can trace our roots back to between the Wars when there was a very active drama group in Ditchling. In the museum there's a woodcut design by Eric Gill for the Ditchling Dramatic Club, dated 1923, which was inspired by Amy Sawyer, who lived in the village. As well as being a renowned artist she also wrote whimsical plays about Sussex village types which were published in 1934 in a book 'Sussex Village Plays', which was dedicated to the Ditchling Village Players.

The Second World War put an end to the group but in January 1945, a meeting was held at the Old Meeting House with the purpose of reviving the Players. It was felt, however, that the name Village Players was too restrictive and so the Ditchling Players was born. One of the original committee members, the late Leon Sinden, became one of our patrons and his sister, Joy, both acted and produced for the Players right up to her death in 1993.

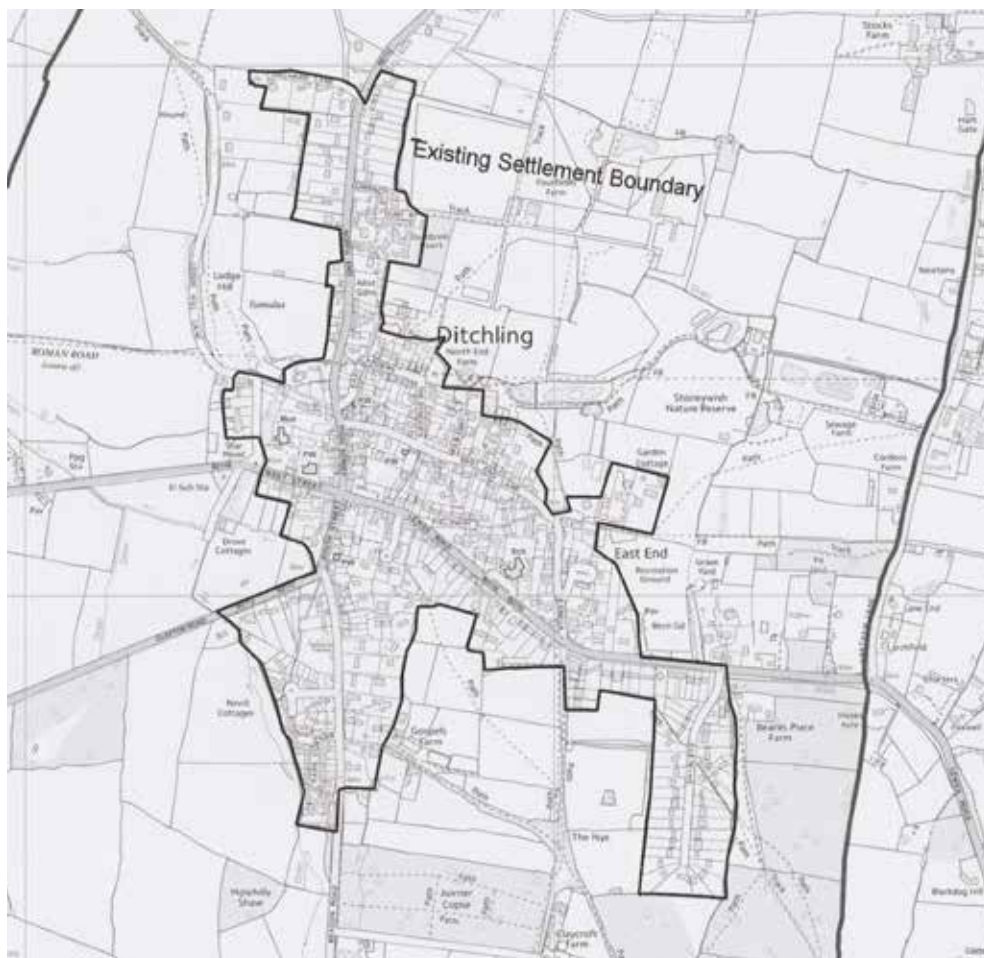
Over the years the Players went from strength to strength and had considerable input into the Ditchling Pageant, which was held every ten years up until 1981. Grace Denman provided the artistic inspiration for this event as she did in many of our productions including 'Alice through the Looking Glass'. This 1969 production was adapted by our late President Pamela Grieve with music written by John Ferdinando and Peter Howells. It was

also a success for Martha Kearney, now the BBC's political correspondent, who played Alice.

In 1972 the Ditchling Village Hall, where our productions are now staged, was rebuilt and we were able to co-operate with the architect to ensure that we have one of the best amateur stages in the district.



1999 saw the return of pantomime to Ditchling for the first time in a number of years and since then we have continued to diversify with not only plays; musicals and pantomimes, but also Murder Mystery Evenings and other social events for our members. We have also been involved in raising money for local charities by holding events at St George's Retirement Village and Danny House, Hurstpierpoint.



Like all Amateur Dramatic groups in the area we pride ourselves in a high standard in all our productions as well as being a friendly group, so anyone joining the Players can be sure of a warm welcome.

Following our successful production of Agatha Christie's 'And then there were None' in November 2018, our next production will be 'How the Other Half Loves' by Alan Ayckbourn (15th to 18th May), and we look forward to seeing you in the audience.

For more information about this and membership of the Players visit our website at www.ditchlingplayers.org.uk

Station Road Carpets

Your local flooring specialists

CARPETS-VINYL-LVT-WOOD-LAMINATE



20% off when quoting "Ditchling"*

FREE MEASURING AND ESTIMATES

With our price match promise and three stores across Sussex, visit us in store or online to find out about our latest offers and promotions.



Subject to min order, see in store for more details. Terms and Conditions apply

8 Longridge Avenue
Saltdean
01273 302499

45 Station Road, Burgess Hill
01444235522
Monday – Saturday 9-5

41 Sussex Road
Haywards Heath
01444 884265

www.stationroad-carpets.co.uk

Ditchling Charity Ball, Saturday 8th June 2019

Did you know that the first Ditchling Charity Ball was held in 1912?

There was a Ditchling Summer Ball previous to this, however, there was a gap of about 5 years before we decided to put it back in the Ditchling calendar. Since then we have arranged three more events and raised the incredible total of £63,700. We have always felt that it is important to support local organisations that benefit the community, rely on donations or have limited resources. It is so rewarding to arrange such a fun event that gives something back to the community. As we are sometimes asked where the money goes, these are the charities that have benefited so far:

Ditchling Pre-School Group	- £8,575.00
The Friends of Ditchling	- £5,075.00
The Old Meeting House (Ditchling) Trust	- £9,375.00
The Ditchling Village Hall	- £11,575.00
The Monday Group	- £10,875.00
Ditchling Museum	- £5,075.00
St. Margaret's Church	- £4,825.00
Westmeston Jubilee	
Pathway Trust	- £4,575.00
The FPTA of Ditchling	
(St Margaret's) CE Primary	- £3,750.00

This year we will be supporting a few new charities; the Ditchling Horticultural Society, Oldlands Mill and the Brighton Yoga Foundation. This is the first year that we have broadened our support to charities just outside Ditchling. Oldlands Mill Trust do an amazing job of restoring and maintaining the beautiful windmill and often struggle for funds, and the Brighton Yoga Foundation has an amazing outreach project that does work with the homeless and disadvantaged people in and around the Brighton area.

The Ditchling Horticultural Society run the Ditchling allotments, which is an essential resource for the local community. At our 2017 ball we raised the incredible sum of £23,700, which was simply outstanding; there are so many generous people locally and we are extremely grateful. It would be simply



fantastic if we could better this amount at this year's ball. With our change of venue to the Ditchling recreation ground and pavilion it has allowed us to sell a couple more tables and this time our event sold out really quickly; it is becoming increasingly popular each year.

The majority of funds raised come from our auctions and prize draw. All the prizes are donated, and as you can imagine, procuring the prizes is a mammoth task. Thankfully, the local community is always extremely generous and we are tremendously grateful to all the local businesses and individuals who donate a prize each year. Every prize is important, however small and our grand prize draw has items valued at £10, £25 and £50 and raises over £2,000.

I'm sure that reading this you will be able to think of something that you can donate; perhaps you do gardening or walk dogs, maybe you are an artist or perhaps you run a company that could donate a prize? The money we raise is all put back into the local community and I know that the charities we



have helped over the years are extremely grateful. Please get in touch and let us know what you are able to donate. You can email me at nikki@ditchlingcharityball.uk.

For further information about the event please visit our website www.ditchlingcharityball.uk or you can follow us on Facebook or Instagram @ditchlingcharityball.

■ PATIOS ■ DRIVEWAYS ■ TURFING
HARD LANDSCAPING SPECIALISTS



Enhancing your outdoor space

If your driveway is looking tired or you're in need of a newly designed patio we've got just the remedy. We'll take your ideas and with our experience transform your outdoor space into a stunning extension of your home. Our fantastic team are well regarded in the local area.



M: 07792 369807
T: 01444 456809
hardypavingltd@gmail.com
hardypavingltd.co.uk



John Batchelor

PLASTERING SPECIALIST

Walls, ceilings, floors and all types of plastering undertaken.

T: 01444 440 744
M: 07803 545 020

Est 1978 • Third generation family business.

johnbatchelorplastering.co.uk



Traffic in the Beacon Villages



For many years, traffic issues have been one of the highest profile local issues for residents of the Beacon Villages. This was confirmed in the clearest possible terms in public consultation exercises during development of our Neighbourhood Plan.

Residents have two concerns: safety and the increasing volume of traffic. Safety concerns arise from pedestrians, cyclists, horse-riders, cars and lorries all sharing roads built decades, if not centuries ago. There are now many more cars and lorries, and they travel faster.

We have seen many traffic accidents in the Beacon Villages over the years. A year ago, following a collision with a car, a rider was seriously injured in Spatham Lane and her horse had to be put down. Earlier this year, a car left the road and knocked down a boundary wall at the Beacon Road/New Road junction in Ditchling – fortunately no-one was in the garden at the time. Even more seriously, a young driver was killed at the end of this summer when his car crashed into a tree just north of Ditchling. Many more incidents go unreported.

The Beacon Parishes Traffic Group (BPTG) has been formed to develop proposals to address these concerns and to implement transport policies in our Neighbourhood Plan. The Group includes councillors from the three Beacon Parish Councils, representatives of East Sussex CC, our local MP, Maria Caulfield, and local residents. Representatives from West Sussex CC also attend from time to time as the parishes are close to the West Sussex border: traffic in Ditchling is affected by traffic on the A23 in West Sussex, and future residential development in Mid Sussex will have major implications for the volume of traffic passing through the village.

The Group has identified as its initial priorities:

1. SPATHAM LANE:

There have been many accidents and 'near misses' over the years, as the lane is well-used by motorists, goods vehicles, horse-riders, cyclists and pedestrians. Most recently, there



was a serious incident in 2017 when a car collided with a horse, causing serious injury to the rider and resulting in the horse being put down. We are in the process of applying to ESCC for a 40mph speed limit. In the longer term, we want to see traffic calming measures to reduce vehicle speeds and to make the lane safer for horse-riders, cyclists and pedestrians.

2. B2112, DITCHLING HIGH STREET & SOUTH STREET:

The volume of traffic using the B2112 and passing through the village results in tailbacks at peak hours. It will continue to increase as future residential developments are completed to the north of Ditchling in Burgess Hill, Wivelsfield and Haywards Heath. Traffic



calming measures are needed to reduce vehicle speeds and to make these roads safer for horse-riders, cyclists and pedestrians, especially in Ditchling village centre.

3. BEACON ROAD:

Beacon Road is an important north-south route to and from Brighton. It is particularly used by horse-riders and by cyclists wanting to get to the Beacon. Many motorists drive too fast, ignoring the safety of other road users. We need traffic calming measures to reduce vehicle speeds and to make these roads safer.

We will also keep in mind longer-term measures, as the volume of traffic can be only expected to increase.

To help us develop proposals, the Group plans to appoint a traffic consultant to prepare a feasibility study. This will build on previous traffic reports, particularly the Ditchling 'Local Area Transport Strategy' ('LATS') and the transport sections of our Neighbourhood Plan. We will use the feasibility study for public consultation and for discussion with ESCC Highways.

There are many calls on ESCC's much-reduced budget, so we are very much aware of the need to consider other sources of funds. There has been recent promising news on this front, as ESCC has Section 106 monies for improvements to the B2112 and the Parish and District Councils start to receive Community Infrastructure Levy (CIL) money.

We will keep you updated as matters progress.
Robin Orme

bigbrandbeds

From the Vokins family. Trusted since 1882



HYPNOS
THE MOST COMFORTABLE BEDS IN THE WORLD

**FREE Disposal of Old Bed on
Purchases over £499
on production of this advert**
CONDITIONS APPLY

**Handmade in Britain with
a 10 year Guarantee**

**Visit our showroom
Monday to Saturday
10am – 4.30pm**

**6 Keymer Road, Burgess Hill,
West Sussex, RH15 0AD**

Tel: 01444 247000
www.bigbrandbeds.co.uk



The Nutmeg Tree

**Recently refurbished Tearoom set in
the heart of Ditchling**



**Morning Coffee • All Day Breakfast • Lunches
Afternoon Tea & Cake • Dogs Welcome
Courtyard Garden • Cycle Park • Licenced**

01273 842708

6 West Street, Ditchling, BN6 8TS

For regular updates and full menu, visit:



thenutmegtreeditchling



@thenutmegtree

Make your wedding extra special with a car from Chariots!

Established in 1993



We provide chauffeur driven executive
cars, limousine & minibuses in Sussex
and the South East
Friendly Staff & Professional Chauffeurs

- ◆ Wedding Car Hire
- ◆ Minibus Hire
- ◆ Chauffeur Service
- ◆ Limousine Hire

01273 813401 Email: info@chariotschauffeurs.com
www.chariotschauffeurs.co.uk

Chariots, Merlins, Uckfield Road, Clayhill, East Sussex, BN8 5RU

**To advertise please call
01843 269513**

The Complete Supplier of **PVCU ALUMINIUM WOOD**

WINDOWS

DOORS

ALTERNATIVE TO TIMBER COLLECTION

CONSERVATORIES

MULTIFOLDS

SHAW'S
THE GLASS & WINDOW COMPANY

ALUMINIUM RANGE

SLIDING DOORS

VERTICAL SLIDERS

COMMERCIAL

AND MUCH MORE!

Head Office | Brighton Showroom | Glass Showroom

8-9 Centenary Industrial Estate,
Hughes Road, Brighton BN2 4AW

Tel: 01273 691000 • Fax: 01273 691001

Shoreham Glass Centre | Showroom

266, Upper Shoreham Road,
Shoreham-by-Sea BN43 6BF

Tel: 01273 462 749 • Fax: 01273 453 093

Supplying Sussex with double glazing, windows and doors since 1970

Email: info@shawsofbrighton.co.uk

Website: www.shawsofbrighton.co.uk

Neighbourhood Plan Challenges

Key issues

1. From a self-sustaining village providing employment and services to most of its residents, as well as those in neighbouring settlements, Ditchling now has a more dependent economy. Agricultural, and latterly vinicultural, uses still dominate outside the settlements, together with the industrial estates of Ditchling Common in the northern portion of Ditchling parish and St Helena Business Park on the northern boundary of Streat. Locally an increasing number of residents now trade from home with the support of internet-based business models. Shops, banks and other services have closed down or moved to nearby larger villages and towns. Local employment has fallen and the parishes have experienced a significant influx of residents who are much more likely to work in the services sector and professional careers in neighbouring towns, Brighton or London, with income levels sufficient to sustain the local high cost of living, particularly of housing costs, and of transport use, itself reflected in the high level of multiple car-owning households.

2. The population grew by 16% over the 10-year period from 2001 (more than twice the average for the county), inward migration being dominated by an influx of younger professional families drawn by the attractive housing, social ambience and community services in the village. At the same time, there was a net outward migration of younger adults who left because of the lack of local employment opportunities, the high cost of housing and shortage of smaller housing units. It is the high cost of housing and dominance of large and expensive detached houses

that mitigates against traditional entry point employment opportunities and deters the young from staying. Strong preferences were expressed by a majority of residents for the neighbourhood plan to redress this imbalance by directing future housing developments towards the provision of low-cost starter and housing trust homes.

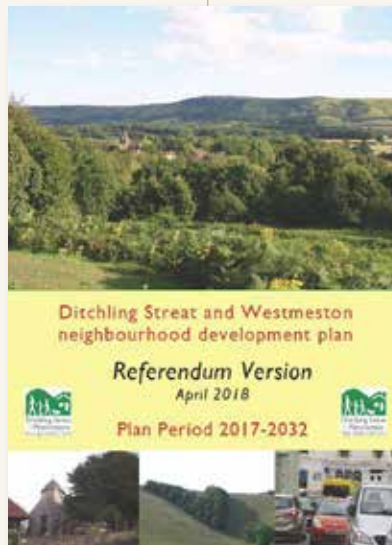
3. The area contains a higher than average proportion of retired, predominately professional, people, with higher than average incomes both in the settlements and at St. George's retirement complex in the north

of Ditchling parish. This demographic characteristic places a strain on community services, particularly caused by the lack of buses, the limited capacity of the medical centre and the lack of local small shops.

4. There are increasing urbanising influences associated with the larger settlements of Haywards Heath to the north and Burgess Hill and Hassocks/Keymer adjoining Ditchling parish to the west. The consequent environmental impacts from the encroachment of housing developments

are threatening the very important open countryside gaps separating Ditchling from Keymer and Burgess Hill which preserve the distinct character of the village.

5. The local environment is under further threat from increasing volumes of through-traffic using unsuitable routes through Ditchling and via Spatham Lane, adding to the already unacceptably high and intrusive commuter through-traffic volumes between Brighton and Haywards Heath, and commercial vehicle movements between east and west, all centred on Ditchling village crossroads.



Jamie Stafford Bathrooms



Design ■ Supply ■ Installation

Tel: 01273 831802



www.jamiestaffordbathrooms.co.uk
enquiries@jamiestaffordbathrooms.co.uk



We are an independent garage who specialise in the repair and servicing of **BMW, Mercedes and VW Audi.**

Our factory trained technicians have over 60 years combined knowledge and experience.

We use the latest diagnostic equipment to cater for all your needs.

01444 242600

www.pbmtechnicalservices.co.uk

Richard@pbmtechnicalservices.co.uk
Unit 17, Ditchling Industrial Estate, Ditchling,
Hassocks, Sussex, BN6 8SG

MORE THAN
TYRES 01444
241947



FRIENDLY,
FAST AND
FREE TYRE
FITTING

**BULBS
WIPERS
BATTERIES
DASH CAMS
NUMBER PLATES
CAR ACCESSORIES**

www.more-than-tyres.co.uk

TISSHAW'S

Family Law Solicitors

Tisshaws is a specialist family law practice offering advice on divorce, children and financial matters

- Fixed Fee Divorce £450 plus VAT & Court Fee
- Initial meeting £50 (inc. VAT) Up to 1 hour – No Obligation
- Fixed Fees negotiated for other family matters

Tel: 01444 472700 / Fax 01444 472701

Email: info@tisshawssolicitors.co.uk

www.tisshawssolicitors.co.uk

Tisshaws Limited T/A Tisshaws Solicitors.
Authorised and regulatory Authority SRA

No.566801





Action for Deafness is a charitable organisation working throughout Sussex with people who are deaf or hard of hearing.

Some facts about hearing loss. Did you know:-

- 50% of over 50 year olds have a hearing loss
- 70% of 70 year olds have a hearing loss
- Most people wait at least ten years before they take action to address their hearing loss
- Hearing Loss can have a significant impact on an individual's mental wellbeing
- Untreated hearing loss doubles the incidence of depression, anxiety and panic attacks
- The Lancet Commission on Dementia Prevention has recently acknowledged hearing loss as a modifiable risk factor for addressing dementia

Action for Deafness (AFD) works to support people to manage their hearing loss and thus the impact of hearing loss on their wellbeing. A wide range of services are offered to ensure that people with hearing loss stay connected and engaged with their local community.

AFD has contracts with a number of local clinical commissioning groups to provide full NHS audiology services, which include provision of hearing tests and hearing aids, where required. AFD provides services from the following 12 locations: - Haywards Heath, Heathfield, Lewes, Shoreham, Worthing, Bognor, Steyning, Henfield, Burgess Hill, Horsham, Crawley and East Grinstead.

AFD also operates 11 hearing aid maintenance clinics and 2 Resource Centres which offer a drop in services for patients to have their hearing aids serviced and to pick up new batteries. These clinics also offer support and advice to hearing aid users. This ongoing support helps to ensure that patients get the full benefit of their hearing aids. The maintenance clinics are all in accessible venues throughout the county.

All new hearing aid users are offered the opportunity to attend a workshop where specially trained staff discuss ways to get maximum benefit from hearing aids, the limitations of hearing aids and a full range of communication tactics.

AFD has a number of initiatives which address social isolation including regular coffee mornings around the county and fully accessible minibus trips. Full communication support is provided at all events to ensure accessibility.

AFD delivers lip reading classes in convenient locations around the county. These classes are always fully subscribed and found to be very beneficial to service users. The tutors are always happy to discuss delivering additional classes in new locations if demand is sufficient.

Deaf Awareness Workshops are tailor made for individual groups and businesses.

As it is estimated that 15.6 million people will have hearing loss in the UK by 2035, it is vital that people know how to communicate clearly with those who have hearing loss.



If you would like to discuss how we can work together to support people in your local area please contact our Community Links Co-ordinator on 01444 415582 or anita@actionfordeafness.org.uk

- Free parking
- No need to book
- Complimentary drinks & newspapers
- Friendly, professional & welcoming



10 Cyprus Rd, Burgess Hill RH15 8DX

01444 232360

www.headmastersthebarbers.co.uk



Classic & Vintage Tractors

Chailey Classic & Vintage Tractor Club, otherwise known as The Chigleys, were delighted to have Tinkers Park (Steam Charitable Trust, Hadlow Down) team up with them on Sunday 4th November for an impromptu vintage tractor run into Lewes in support of the Royal British Legion's Poppy Appeal.

Sunday shoppers at the Lewes Tesco Superstore were somewhat bemused to see and hear the barking sound of a vintage John Deere tractor, as were those in Cliffe High Street and Lewes Railway Station.

Tinkers Park were represented by volunteer Drew Larkin who brought along an early 'Unimog', just one of the Trust's impressive collection of vintage machinery, steam and bygones. Chailey Tractor Club was represented by a 1952 Canadian built, petrol driven John Deere model AR towing the Club's mascot trailer. All were covered in poppies.

Club Chairman Howard Venters said "We were absolutely delighted to have the opportunity to team up with

Tinkers Park and plans are in place for future joint outings in support of the local community, education and charitable aims".

Dave Scott, Lewes resident and the RBL's Poppy Appeal Co-ordinator for the Lewes area, said 'We were pleased to see the effort made by both organisations in support of the Poppy Appeal. This is a special year being the 100th centenary and the vintage tractors attracted a lot of interest and many smiling faces, particularly with the children'.

www.chaileytractorclub@gmail.com

www.chaileytractorclub.org

www.tinkerspark.com



Ditchling (St Margaret's) CE Primary and Nursery School

In September 2018, Ditchling Pre-School relocated to Ditchling (St Margaret's) CE Primary and Nursery School.

riding them.

Learning about Greece: The nursery children have been using lots of skills in order to make some Greek-style food.

They used scissors to cut sheets of greaseproof paper and to open the packets of pastry; they used a knife to cut the pastry from the packet in half and then quarters; they rolled out the pastry, brushed on some oil, added cheese and tomatoes; and wrote a name label for their food so that we could identify it as theirs once it came out of the oven. The children loved the taste and texture of these mini puff pastry tartlets so much that this was our second time making them.

We found an image of the Greek flag and looked at pictures of typical Greek food such as a Greek salad with olives and feta cheese.

Promoting Good Health:
We are promoting healthy eating and being active.

To this end, we have been completing some food activities, such as making sandwiches with ingredients

like cucumbers and humus, making Greek style cheese tarts with feta cheese, tomatoes and peppers, and chopping up carrots and potatoes to make vegetable soup. Many of the children show understanding that food with sugar in it is unhealthy and that we shouldn't eat very much of it.

We have also been using our balance bikes to improve our skills such as gliding along, holding our feet in the air, riding round cones, and walking along holding our bikes instead of



THE WINDMILLS JUNIOR SCHOOL

Governing Board Vacancy



The governing board of The Windmills Junior School is currently searching for a suitable person to join their friendly team to work alongside the headteacher and staff to ensure the school delivers high quality education.

Our governors come from a range of different backgrounds, skills and experience but all share a common interest of wanting the best possible education for the children in the school.

The current vacancy is for a co-opted governor and the governing board is particularly interested in appointing someone with managerial experience in an HR, legal, education or finance setting.

We are fortunate to have a several parents sitting on our governing board. However, under the terms of our constitution we are not able to appoint more parents. We are therefore keen to receive applications from people within the local community; this can include parents of children who attend a school



outside of Hassocks.

For those of you who are not familiar with The

Windmills, we are a 3-form entry junior school in the village of Hassocks; with space for 360 pupils in 12 classes, 3 in each year group. Over recent years the demographic of the village has changed, and continues to do so, with more young families moving into the area.

You will find more information about the school's community, its aims, vision and values on the school website:

<http://www.windmills.w-sussex.sch.uk/>

If you are interested in finding out more about the role, please contact Sue Bandy, Clerk to the Governors, by email: sbandy@windmillsjunior.org.uk She will be happy to arrange a suitable time for you to meet the Chair of Governors and Headteacher for an informal chat and to discuss the role in more detail.

The Beacon Parish of St Margaret's, Ditchling, Streat Parish Church and St Martin's Westmeston

A Brief synopsis from the Annual Report from the Year to 31 December 2017

Buildings

A new architect has been appointed and a major review undertaken of required works which will be undertaken in 2018. These works will include work on the heating of St Margaret's and work on preventing water ingress and repainting the west walls of both Streat Church and St Martin's Westmeston. Some reordering of both of those churches will also be undertaken to install a toilet in each church and simple catering facilities. In St Margaret's the heating system will have to be replaced which is a major task.

Defibrillators were installed in the porches of all three churches, funded partly by a personal donation and partly by using a grant from the Turner Dumbrell Trust. The PCC is very grateful for a grant from the Turner-Dumbrell Foundation (£7,000) for churchyard upkeep in St Margaret's as well as defibrillator purchase and installation. The PCC is also very grateful for a grant of £400 from the Ditchling Parish Council towards the maintenance and upkeep of the clock on the tower of St Margaret's.

A sum of £24,228 was spent on general maintenance, repair and upgrading of the buildings some £5,919 more than last year, due to a number of minor additional repairs.

The cost of upkeep of churchyards was £8,557, an increase of £1,184 overall.

A major development during the year was the decision to take on a lease of the former Emmanuel Chapel from the Church Growth Fund. The building, renamed Emmanuel Centre, it is hoped that once the initial costs of putting the building in order have been met, the ongoing lease and maintenance costs can be covered by fees generated by hiring out the facilities when not in parish use.

The Centre will not only provide a space for youth work and for the Noah's Ark toddlers group which currently meets in St Margaret's but will draw in activities from the wider village and provide an opportunity for outreach forms of worship.

Youth Work

Our youth worker Gary Pickett, shared with the neighbouring Parish of Clayton and Keymer, started work in March. Gary has got

off to a flying start, holding very popular after school classes in St Margaret's School. He also ran holiday activities for the pupils which were very popular and this brought more families into church. The linkages between the church and St Margaret's Primary School are now very strong with regular services held in the school.

Gary also engaged with the Acorns Nursery and Forest School which is held in Westmeston Parish Hall.



Awaken your senses In our new Winter Garden and
feel the colours, scents and textures lift your spirits
Flourishing from mid-January

Winter Garden

Wakehurst

For details visit kew.org/wakehurst

Royal Botanic Gardens
Kew

Seymour
LOCKSMITHS

- 24/7 Emergency Call Out
- Gaining Entry
- Locks Upgraded & Replaced
- uPVC Doors & Windows

07710 408 414
01273 465 336

We pride ourselves
in offering complete
transparency. We'll
give you a price
over the phone so
you know what
you're going to pay.



Your local friendly family run garage with over 40 years
experience in all aspects of vehicle repairs, old, new,
classic, sports & prestige.

All Makes & Models • M.O.T's & Servicing • Repairs
Diagnostic Specialists • Wheel Alignment
Tyres & Exhausts • Clutches • Cambelts • ECU Remapping
Air Conditioning • Brakes • Brake Disc Skimming
Welding & Fabrication • Engine Tune-ups
Petrol Injector Testing & Servicing • Diesel Specialists
Carbon Cleaning • Courtesy Cars Available



www.rwmotorengineeringltd.co.uk

Unit 1, The Old Brickworks,
Station Road, Plumpton Green
East Sussex BN7 3DF

Tel: **01273 891393**
Email: rwengineering@live.co.uk



Stunning new Winter Garden for Wakehurst

Wakehurst, Kew's Wild Botanic Garden, in Ardingly, West Sussex is now home to a dynamic new Winter Garden, to be officially launched on 23 January 2019.

The Winter Garden is Wakehurst's new horticultural spectacle, full of sensory delight and the perfect place to lift the spirits on a cold winter's day. Designed by Wakehurst Garden Supervisor Francis Annette, after training at Andrew Wilson's London College of Garden Design, it weaves 33,000 plants into a bold contemporary composition.

Mature Himalayan silver birch trees (*Betula utilis* var *jacquemontianii*), are the centre of attention. Planting them was a careful logistical operation, securing the 10ft high trees firmly into the ground with specially designed anchors. The dramatic pure white trunks rise resplendent to the sky and are interspersed with the coppery gleam of the Tibetan Cherry (*Prunus serrula tibetica*).

Within this canopy, the rich fragrance of *Daphne* and *Witch Hazel*, placed close to path edges, reward visitors with their perfume. Texture and colour come from massed blocks of *Cornus* (including the cultivars 'Midwinter Fire' and 'Bud's Yellow'), succulent bronze *Bergenia*, soft, feather-like *Calamagrostis* and *Hellebores*. Swathes of *Cyclamen*, grasses, snowdrops, *Crocus* and box hedging were drawn the eye through the garden.

Complete immersion in winter beauty drove the design; a place to lose yourself amongst the shimmering bark, soft foliage and rich scents. You can rest on the contemporary carved seat and feel cocooned as you look up at the winter sky. The all-weather path twists and turns throughout the garden, adding to the feeling of discovery – you don't quite know what you will see around the next corner!

Wakehurst has always been a trailblazer for winter gardens – with one of the first in the UK being created in 1986. Initially focussing on specimen-based planting, the first Winter Garden had lost its energy and in 2017 we decided the time was right for a transformation. We have a range of great photography available tracking the planting of the Winter Garden, including lovely shots of our team covered in mud!

For more information please contact: Sandra Howard, Communications

and Content Manager on **01444 894336**.

Wakehurst, Kew's Wild Botanic Garden in the Sussex High Weald is one of the most beautiful and significant botanic gardens in the country. It is home to Kew's Millennium Seed Bank, which houses and protects seed from the world's most substantial and diverse collection of threatened and useful wild plants, and leads the MSB Partnership, a crucially important global science-based conservation programme which is the largest of its kind in the world.



The estate includes a contemporary botanic garden, where ornamental plantings and exotic tree and shrub collections of international importance sit within native woodland. Wakehurst's natural assets associated with its countryside location renders it complementary to Kew's West London site, with different growing conditions, and a real emphasis on wild plant collections. Coupled with the Millennium Seed Bank, Wakehurst offers an inspiring, immersive, and educational day out for the whole family, and serves as a vital contribution to UK and global plant conservation.

Kew receives just under half of its funding from Government through the Department for the Environment, Food and Rural Affairs (Defra) and research councils. Further funding needed to support Kew's vital work comes from donors, membership and commercial activity including ticket sales.

Please note that Wakehurst is referred to just as Wakehurst, not Wakehurst Place. It is not a National Trust property.

active eyewear



for a sporting chance

specialist ski, swim & cycle eyewear that makes a difference
in-store now



01273 843946

www.hassockseyecare.co.uk
17 Keymer Rd, Hassocks BN6 8AD

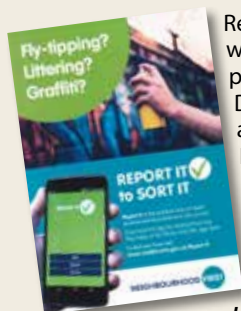
WWW.BMGBESPOKE.CO.UK/HIDDENGEMS

**HIDDEN GEMS
OF SUSSEX**

12 Months Interest Free Credit.

REPORT IT TO SORT IT

Neighbourhood First



Reporting it is the quickest way to report environmental problems to the council. Download the app for Android from the Play Store, or for I phone from the app Store

To find out more Visit:-
www.lewes-eastbourne.gov.uk/streets-parking-and-travel/report-it/

lewes-eastbourne.gov.uk/streets-parking-and-travel/report-it/

Your council in the community

Neighbourhood First is a team of advisors who work with communities to improve their neighbourhood. They act as the link between the community and work alongside a range of volunteers, groups, and other council staff to maintain the quality of environment. Our Neighbourhood Advisors can help and assist you to try and resolve a range of issues, such as:-

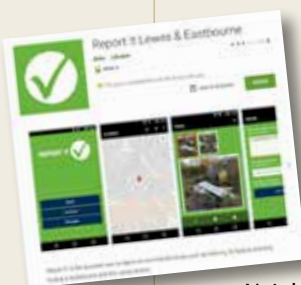
Dog Fouling

Fly Tipping

Littering and street cleaning

Abandoned vehicles

Fallen trees



Our advisors are available to speak with resident and attend community, town and parish council meetings to find out what matters most to our communities.

They carry out a range of inspections on our streets and open spaces to make sure the environment is well maintained. They can also give advice on access issues to local businesses.

You can find out more about the work of Neighbourhood First :-
www.lewes-eastbourne.gov.uk/environmental-problems/neighbourhood-first/

Neighbourhood first is a service delivered by Lewes District and Eastbourne Borough Councils. The councils have joined up to create two customer-focused and cost effective organisations delivered by a shared workforce.

To get in touch Visit:-

www.lewes-eastbourne.gov.uk/contact-us/



PLEASE SUPPORT LOCAL BUSINESSES

A big thank you goes out to all the local businesses that have advertised and supported the Ditchling Parish Council Magazine

To advertise please call 01843 269513



Supporting the
REBUILD OF BRITAIN



Published by Community Ad Web Ltd 01843 834160
email info@communityad.co.uk web www.communityad.co.uk

The views expressed in any published content are solely those of the contributors. The Publishers accept no responsibility for the accuracy of any information contained in the publication. The contents of this magazine including images may not be copied, reproduced, distributed, downloaded or displayed in any form or by any means without the prior written permission of Community Ad Web Ltd. Unless otherwise specified, the authors of the literary and artistic works in the pages in this magazine have asserted their moral right pursuant to Section 77 of the Copyright Designs and Patents Act 1988 to be identified as the author of those works. The Publishers reserve the right not to publish a submission or part of a submission that they consider defamatory or otherwise inappropriate for publication.



With 30 years of experience, call
Anells of Sussex for a professional
and reliable service from start to finish.

All aspects of construction work undertaken including:

- Refurbishments
- Carpentry
- Extensions
- Conversions
- Kitchens
- Bathrooms
- and much more...

Anells of Sussex Ltd

T: 01273 831561 • M: 07765 527150

E-mail: contact@anells.co.uk • www.ansellsofsussex.co.uk



- ✓ Sizes to Suit You
- ✓ Choice of Backrests
- ✓ Wide Range of Fabric & Leather Covers
- ✓ Matching Sofas & Armchairs
- ✓ UK Manufactured
- ✓ Free Delivery

Riser Recliners
from **£499***



Wheelchairs
from **£99.99***



Scooters
from **£799***



Stairlifts
from **£1,799***

Slippers & Shoes
from **£27.50***



Wheeled Walkers
from **£64.99***



Bathlifts
from **£299***



Visit your nearest showroom today!

Hove Showroom
18 Boundary Road
Hove, BN3 4EF
01273 42 42 24



Burgess Hill Showroom
21 Albert Drive
Burgess Hill, RH15 9TN
01444 253 300



Shop Online: www.clearwellmobility.co.uk



*Prices exclude VAT and are available to those suffering from a long term condition or illness upon the completion of a declaration.